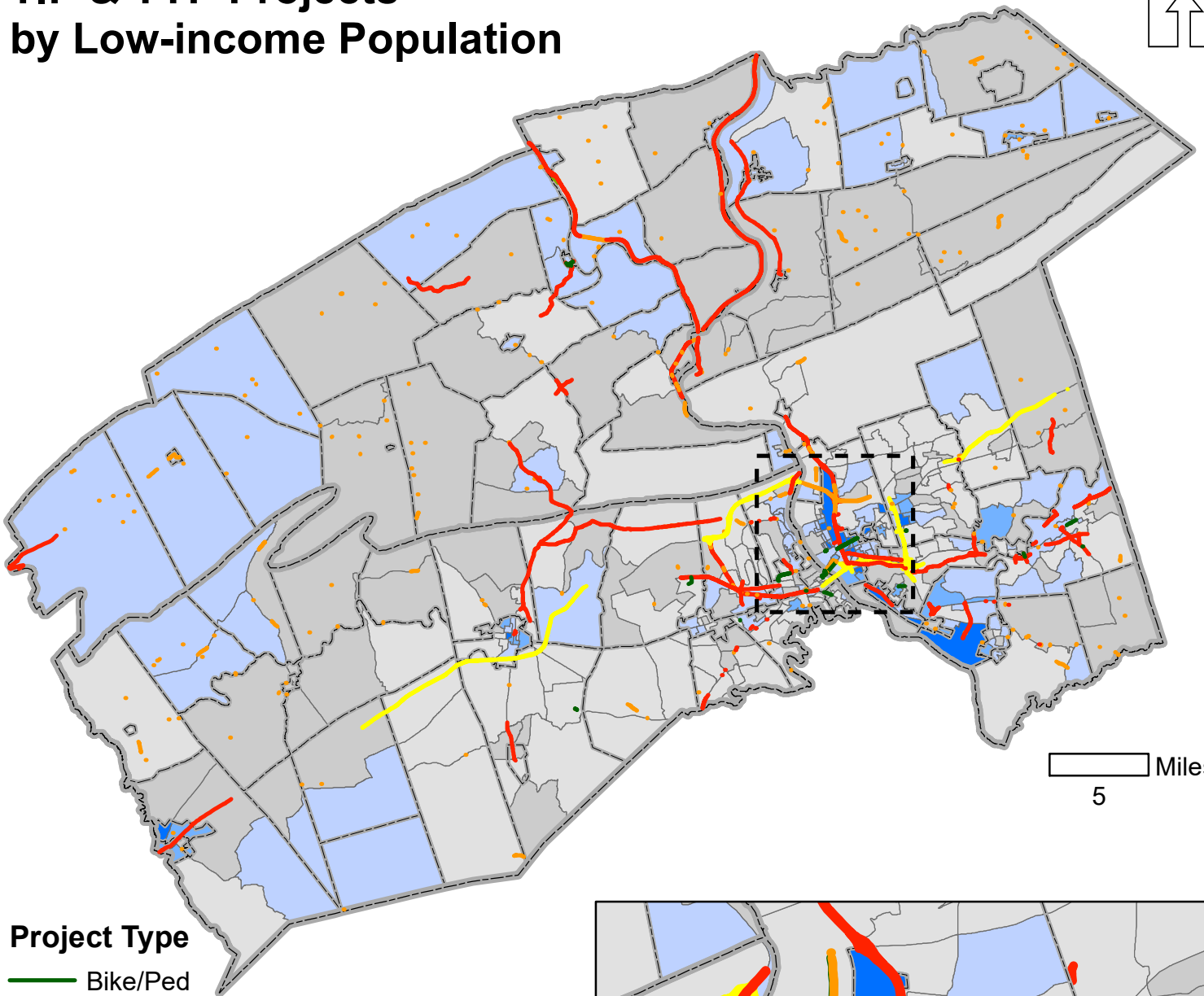


Map 16 TIP & TYP Projects by Low-income Population



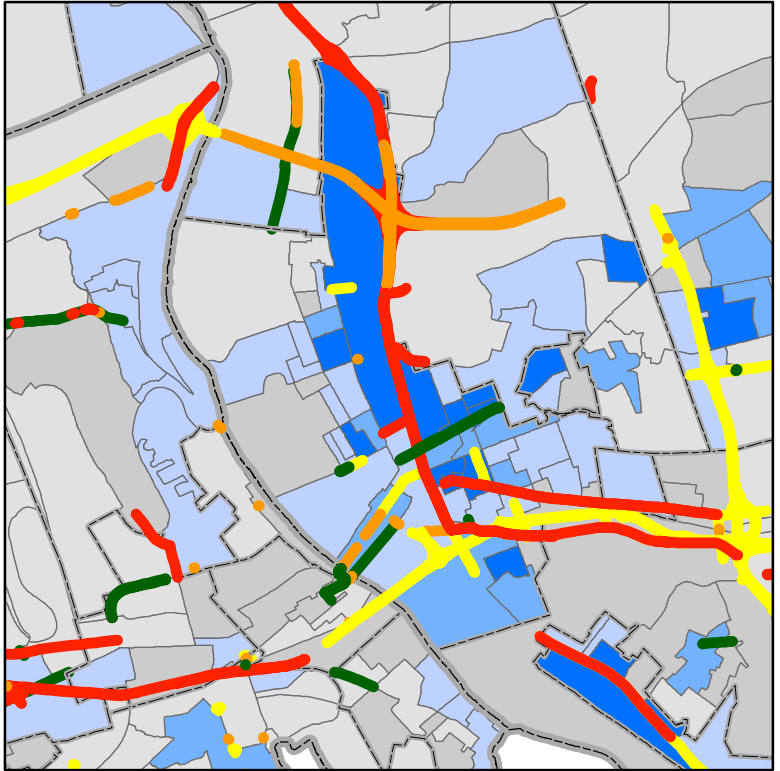
5 Miles

Project Type

- Bike/Ped
- Bridge
- Intermodal
- Interstate
- Roadway

Low-income Population Percentage by Block Group

- Less than 4.89%
- 4.89% - 9.77%
- 9.78% - 21.59%
- 21.60% - 37.45%
- Greater than 37.45%



Source: 2015-2019 American Community Survey 5-Year Estimates