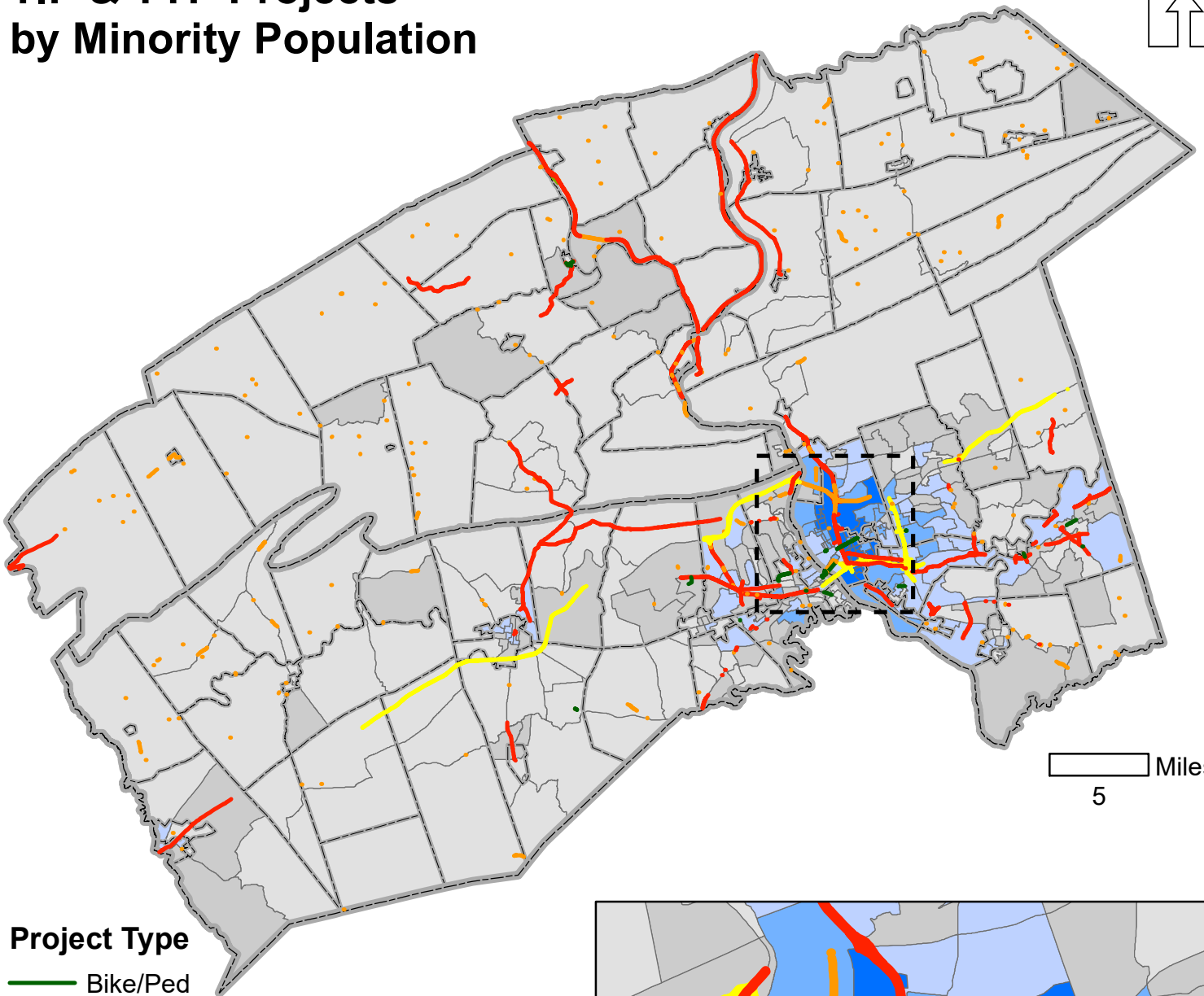


# Map 15 TIP & TYP Projects by Minority Population



5 Miles

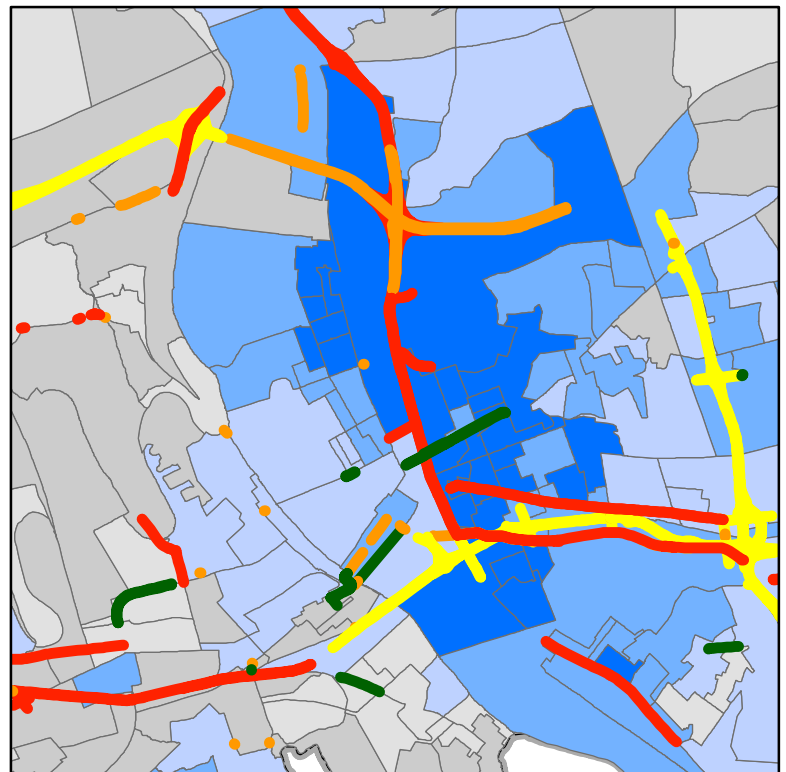
## Project Type

- Bike/Ped
- Bridge
- Intermodal
- Interstate
- Roadway

## Minority Population

### Percentage by Block Group

- Less than 9.49%
- 9.49% - 23.15%
- 23.16% - 44.57%
- 44.58% - 70.93%
- Greater than 70.94%



Source: 2015-2019 American Community Survey 5-Year Estimates