



# 2023 Building Activity Report



*Rockville Estates,  
Marysville, Perry County*



*Hertzler Road Barn, Conewago Twp., Dauphin County*

# FOREWORD . . .

Tri-County Regional Planning Commission’s 2023 Building Activity Report focuses on building permit activity for residential, commercial and industrial development in Dauphin and Perry counties. It provides an analytical tool for the region and for TCRPC’s Regional Growth Management Plan.

If you have questions or would like to suggest additional information for future editions of this report, please contact TCRPC at [planning@tcrpc-pa.org](mailto:planning@tcrpc-pa.org) or call (717) 234-2639.

**Steve Deck, AICP**  
*Executive Director*

# CONTENTS . . .

Introduction .....	Page 3
TCRPC Staff.....	Page 4
Tri-County Regional Planning Commission.....	Page 5
Dauphin County Data.....	Page 6
Perry County Data .....	Page 20
30-Year Regional Trend.....	Page 34

# INTRODUCTION . . .

The Tri-County Regional Planning Commission's 2023 Building Activity Report shows Dauphin and Perry counties continuing to experience building growth over the previous year, with slight differences in most of the activity sectors.

## RESIDENTIAL

Dauphin County's municipalities issued permits for 905 new residential units in 2023, up from 784 in 2022. Perry County experienced a decrease, with 65 permits in 2023 compared to 117 in 2022.

Susquehanna Township was the municipality with the largest increase in new housing permits at 341, with 128 for townhouse development and 144 for multi-family apartments. It also had the largest number of single-family home permits at 69, with Lower Paxton Township in second place with 65.

The area's residential growth continues to occur primarily in the first-ring suburbs with smaller, infill development, matching the national trend in which residents prefer living on smaller lots closer to amenities and services.

## COMMERCIAL

2023 saw mixed trends in commercial development, with an increase in the number and value of new developments and a decrease in commercial expansions.

The counties issued 62 permits for new commercial facilities -- 54 in Dauphin County and 8 in Perry County -- up from 36 combined in 2022. The value of new commercial development in Dauphin County was \$94.9 million in 2023, up from \$35 million in 2022. The value of new commercial development in Perry County was about \$939,000 in 2023, up from \$850,000 in 2022.

In Dauphin County, commercial improvements and expansions decreased in number but remained stable in value. They decreased from 478 permits in 2022 to 354 in 2023, while the value remained comparable at \$106 million in 2023 and \$104 million in 2022. Perry County also had a decrease in permits, from 10 valued at \$1.1 million in 2022 to 7 valued at \$408,900 in 2023.

## INDUSTRIAL

Perry County had no industrial activity again in 2023. Dauphin County had 3 new industrial permits at a value of \$103 million. Permits for industrial improvements and expansions in Dauphin County decreased from 24 valued at \$30.6 million in 2022 to 12 valued at \$19 million in 2023.

Overall, this report shows a continued pattern of building the local tax-base and providing new job opportunities. If the inner-ring suburbs continue to grow, it will be crucial to link the region's transportation options with our land use regulations to ensure that the built environment we desire is achieved and accessible to all, as recommended in TCRPC's Regional Growth Management Plan.

# TCRPC STAFF . . .

**Steve Deck, AICP**  
*Executive Director*  
[sdeck@tcrpc-pa.org](mailto:sdeck@tcrpc-pa.org)

**Diane Myers-Krug, AICP**  
*Associate Director*  
[dkrug@tcrpc-pa.org](mailto:dkrug@tcrpc-pa.org)

**Ana Avila-Tinoco**  
*Administrative Assistant*  
[aavila-tinoco@tcrpc-pa.org](mailto:aavila-tinoco@tcrpc-pa.org)

**Andrew Bomberger, AICP**  
*Transportation Planning Coordinator*  
[abomberger@tcrpc-pa.org](mailto:abomberger@tcrpc-pa.org)

**Denise Dillman**  
*HR / Finance Assistant*  
[ddillman@tcrpc-pa.org](mailto:ddillman@tcrpc-pa.org)

**Karen Dixon**  
*Transportation & Community Planner*  
[kdixon@tcrpc-pa.org](mailto:kdixon@tcrpc-pa.org)

**Jerry Duke, AICP**  
*Dauphin County Planning Coordinator*  
[gduke@tcrpc-pa.org](mailto:gduke@tcrpc-pa.org)

**Jason Finnerty**  
*Perry County Planning Coordinator*  
[jfinnerty@tcrpc-pa.org](mailto:jfinnerty@tcrpc-pa.org)

**Timothy Jones**  
*HPMS Coordinator / GIS Technician*  
[tjones@tcrpc-pa.org](mailto:tjones@tcrpc-pa.org)

**Alexa Korber**  
*Planner*  
[akorber@tcrpc-pa.org](mailto:akorber@tcrpc-pa.org)

**Larry Portzline, APR**  
*Communications Coordinator*  
[lportzline@tcrpc-pa.org](mailto:lportzline@tcrpc-pa.org)

**Tanner Stroup**  
*Transportation & Community Planner*  
[stroup@tcrpc-pa.org](mailto:stroup@tcrpc-pa.org)

**Benjamin Warner**  
*Planner*  
[bwagner@tcrpc-pa.org](mailto:bwagner@tcrpc-pa.org)

# CONTACT TCRPC . . .

112 Market Street, 2nd Floor  
Harrisburg, PA 17101-2015  
(717) 234-2639  
[www.tcrpc-pa.org](http://www.tcrpc-pa.org)



*Dauphin County Veterans Memorial Building,  
Home of Tri-County Regional Planning  
Commission*

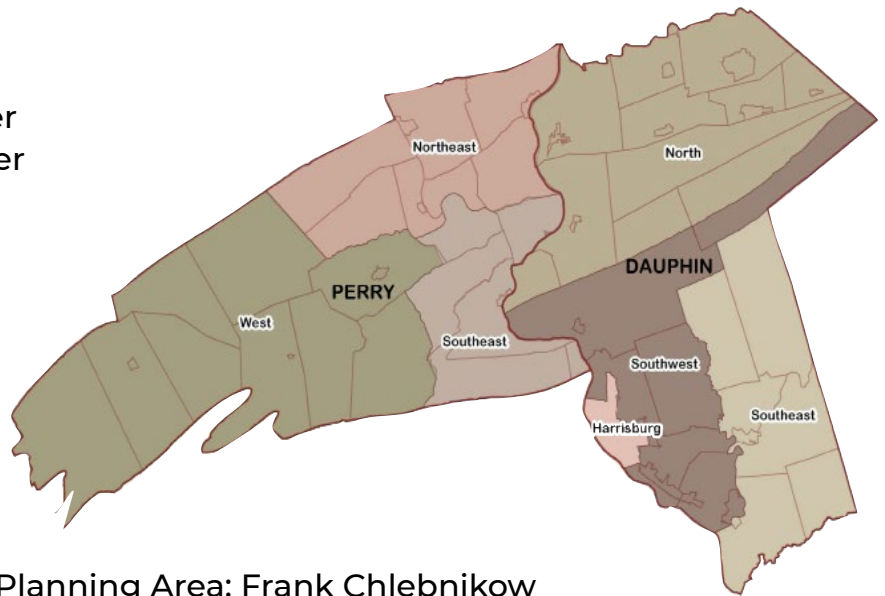
# TRI-COUNTY REGIONAL PLANNING COMMISSION MEMBERSHIP . . .

## OFFICERS:

- Chairman: Danny Kirk
- Vice Chairman: John Kerschner
- Secretary: Tom Graupensperger
- Treasurer: Robert Spandler

## DAUPHIN COUNTY:

- Board of Commissioners: Mike Pries
- Planning Commission: Mary Gaiski, John Kerschner, Gary Lenker, Robert Spandler
- Member-at-Large: Fred Lighty
- Dauphin Southwest Regional Planning Area: Frank Chlebnikow
- Dauphin Southeast Regional Planning Area: Robert Hess
- Dauphin North Regional Planning Area: Deb Everly



## PERRY COUNTY:

- Board of Commissioners: Brenda Watson
- Planning Commission: Mike Hartley, Tom Graupensperger, Danny Kirk, Jim Turner
- Member-at-Large: Jay Bratton
- Perry Northeast Regional Planning Area: Nathan Lesh
- Perry West Regional Planning Area: Nina Fitchet
- Perry Southeast Regional Planning Area: John Schulze

## CITY OF HARRISBURG:

- Harrisburg City Regional Planning Area: Dan Snow

## TCRPC'S MISSION

To foster the long-term livability and vitality of our communities, counties and region.

# DAUPHIN COUNTY



*Truck terminal, Route 230,  
Londonderry Twp., Dauphin County*

**TABLE D-1  
NEW DWELLING UNITS / COMMERCIAL / INDUSTRIAL / PUBLIC FACILITY ESTABLISHMENTS  
(based on issued building permits)  
DAUPHIN COUNTY 2023 (Part 1 of 2)**

MUNICIPALITY	SINGLE FAMILY	SEMI-DETACHED	MULTI-FAMILY APARTMENTS	TOWNHOUSES	MOBILE HOMES	APARTMENT CONVERSIONS	TOTAL NEW RESIDENTIAL UNITS
Berrysburg Boro.	0	0	0	0	0	0	0
Conewago Twp.	2	0	0	0	8	0	10
Dauphin Boro.	0	0	0	0	0	0	0
Derry Twp.	9	7	0	8	0	0	24
East Hanover Twp.	6	0	0	10	2	0	18
Elizabethville Boro.	0	0	0	0	0	0	0
Gratz Boro.	0	0	0	0	0	0	0
Halifax Boro.	0	0	0	4	0	0	4
Halifax Twp.	3	0	0	0	4	0	7
Harrisburg City	0	0	119	0	0	0	119
Highspire Boro.	0	0	0	0	0	0	0
Hummelstown Boro.	0	0	0	0	0	0	0
Jackson Twp.	3	0	0	0	0	0	3
Jefferson Twp.	1	0	0	0	0	0	1
Londonderry Twp.	3	0	0	0	0	0	3
Lower Paxton Twp.	65	0	0	36	0	0	101
Lower Swatara Twp.	8	0	112	7	5	0	132
Lykens Boro.	1	0	0	0	0	0	1
Lykens Twp.	5	0	0	0	1	0	6
Middle Paxton Twp.	12	0	0	0	1	0	13
Middletown Boro.	6	0	0	6	0	0	12
Mifflin Twp.	0	0	0	0	0	0	0
Millersburg Boro.	9	0	0	0	0	0	9
Paxtang Boro.	0	0	0	0	0	0	0
Penbrook Boro.	0	0	0	0	0	0	0
Pillow Boro.	NA	NA	NA	NA	NA	NA	NA
Reed Twp.	0	0	0	0	0	0	0
Royalton Boro.	0	0	0	0	0	0	0
Rush Twp.	0	0	0	0	0	0	0
South Hanover Twp.	13	0	0	0	1	0	14
Steelton Boro.	0	0	0	0	0	0	0
Susquehanna Twp.	69	0	144	128	0	0	341
Swatara Twp.	6	0	0	0	0	0	6
Upper Paxton Twp.	4	0	0	0	0	0	4
Washington Twp.	1	0	0	0	0	0	1
Wayne Twp.	2	0	0	0	0	0	2
West Hanover Twp.	9	0	0	63	0	0	72
Wiconisco Twp.	0	0	0	0	1	0	1
Williams Twp.	1	0	0	0	0	0	1
Williamstown Boro.	0	0	0	0	0	0	0
<b>TOTAL</b>	<b>238</b>	<b>7</b>	<b>375</b>	<b>262</b>	<b>23</b>	<b>0</b>	<b>905</b>

\* No response / Not available

**TABLE D-1  
NEW DWELLING UNITS / COMMERCIAL / INDUSTRIAL / PUBLIC FACILITY ESTABLISHMENTS  
(based on issued building permits)  
DAUPHIN COUNTY 2023 (Part 2 of 2)**

MUNICIPALITY	DWELLINGS DEMOLISHED	NET TOTAL NEW RESIDENTIAL UNITS	REHABBED DWELLING	NEW COMMERCIAL ESTABS.	NEW INDUSTRIAL ESTABS.	NEW PUBLIC FACILITY
Berrysburg Boro.	0	0	0	0	0	0
Conewago Twp.	6	4	0	0	0	0
Dauphin Boro.	0	0	0	0	0	0
Derry Twp.	0	24	0	4	1	0
East Hanover Twp.	2	16	0	0	0	1
Elizabethville Boro.	0	0	0	0	0	0
Gratz Boro.	2	-2	0	0	0	0
Halifax Boro.	4	0	0	0	0	0
Halifax Twp.	1	6	0	2	1	1
Harrisburg City	22	97	99	2	0	1
Highspire Boro.	0	0	0	0	0	0
Hummelstown Boro.	1	-1	0	1	0	0
Jackson Twp.	0	3	0	0	0	0
Jefferson Twp.	0	1	0	0	0	0
Londonderry Twp.	10	-7	0	0	0	0
Lower Paxton Twp.	2	99	0	8	0	0
Lower Swatara Twp.	4	128	0	3	1	1
Lykens Boro.	0	1	0	0	0	0
Lykens Twp.	0	6	0	2	0	0
Middle Paxton Twp.	3	10	0	0	0	0
Middletown Boro.	0	12	6	7	0	0
Mifflin Twp.	0	0	0	0	0	0
Millersburg Boro.	0	9	0	1	0	0
Paxtang Boro.	0	0	0	0	0	0
Penbrook Boro.	0	0	0	0	0	0
Pillow Boro.	NA	NA	NA	NA	NA	NA
Reed Twp.	0	0	0	1	0	0
Royalton Boro.	0	0	0	0	0	0
Rush Twp.	0	0	0	0	0	0
South Hanover Twp.	2	12	0	0	0	0
Steelton Boro.	0	0	2	1	0	0
Susquehanna Twp.	4	337	8	9	0	0
Swatara Twp.	49	-43	0	9	0	0
Upper Paxton Twp.	1	3	0	0	0	0
Washington Twp.	0	1	0	0	0	0
Wayne Twp.	0	2	0	0	0	0
West Hanover Twp.	2	70	0	2	0	0
Wiconisco Twp.	2	-1	0	0	0	0
Williams Twp.	0	1	0	1	0	0
Williamstown Boro.	0	0	0	1	0	0
<b>TOTAL</b>	<b>117</b>	<b>788</b>	<b>115</b>	<b>54</b>	<b>3</b>	<b>4</b>

\* No response / Not available



**TABLE D-2  
DWELLING UNITS BY TYPE  
(based on issued building permits)  
DAUPHIN COUNTY  
1993-2023**

YEAR	SINGLE FAMILY	SEMI-DETACHED	MULTI-FAMILY	TOWNHOUSES	MOBILE HOMES	APARTMENT CONVERSIONS	TOTAL
1993	742	24	181	375	95	14	1,431
1994	657	31	109	279	92	6	1,174
1995	537	16	168	164	85	3	973
1996	525	16	339	259	63	10	1,212
1997	537	16	562	273	79	3	1,470
1998	524	41	220	244	39	0	1,068
1999	550	32	98	318	29	0	1,027
2000	398	26	68	288	27	7	814
2001	447	50	235	223	59	2	1,016
2002	431	34	96	317	12	2	892
2003	615	48	257	341	50	2	1,313
2004	572	70	10	346	29	1	1,028
2005	607	60	181	299	32	11	1,190
2006	443	37	61	287	21	1	850
2007	316	37	46	414	30	0	843
2008	252	16	47	255	22	0	592
2009	224	34	76	246	25	0	605
2010	305	20	91	243	10	11	680
2011	301	4	31	110	25	94	565
2012	225	18	387	128	52	2	812
2013	276	5	107	104	15	3	510
2014	236	4	158	90	15	15	518
2015	240	21	297	73	24	1	656
2016	305	13	146	120	14	28	626
2017	379	2	115	42	17	2	557
2018	464	11	205	101	23	0	804
2019	307	28	165	134	34	55	723
2020	343	35	164	142	30	2	716
2021	401	33	10	166	39	7	656
2022	340	44	12	369	17	1	783
2023	238	7	375	262	23	0	905
<b>TOTAL</b>	<b>12,499</b>	<b>826</b>	<b>4,642</b>	<b>6,750</b>	<b>1,104</b>	<b>283</b>	<b>26,104</b>

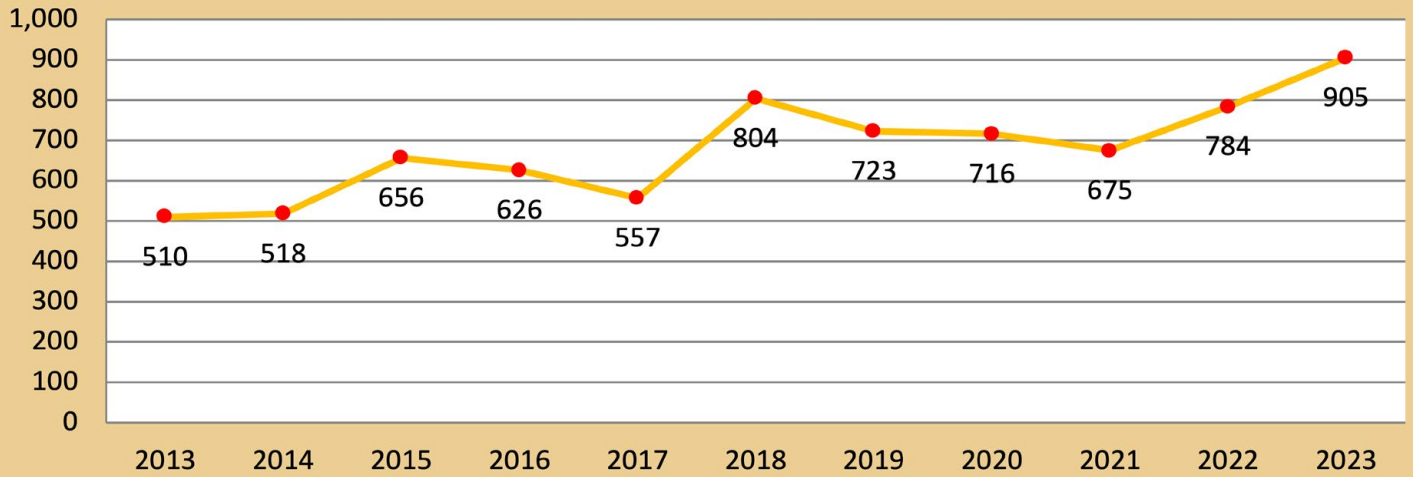
Based on municipalities that responded to Annual Building Permit Survey

**TABLE D-3  
TOTAL NEW DWELLING UNITS  
(BASED ON ISSUED BUILDING PERMITS)  
DAUPHIN COUNTY  
2013-2023**

MUNICIPALITY	2013	2014	2015	2016	2017	2018	2019	2020	2021	2022	2023	TOTAL
Berrysburg Boro.	0	0	0	0	0	0	0	0	0	0	0	0
Conewago Twp.	2	6	8	11	10	*	22	10	15	10	10	104
Dauphin Boro.	0	2	0	0	1	0	0	0	0	1	0	4
Derry Twp.	40	32	38	35	53	39	33	32	33	24	24	383
East Hanover Twp.	17	10	5	6	7	6	11	6	18	7	18	111
Elizabethville Boro.	0	1	0	0	0	2	1	1	0	1	0	6
Gratz Boro.	1	0	0	*	0	0	0	0	*	*	0	1
Halifax Boro.	0	0	0	0	0	0	0	0	*	*	4	4
Halifax Twp.	1	3	2	4	6	2	3	3	17	6	7	54
Harrisburg City	0	1	0	0	4	42	45	0	19	10	119	240
Highspire Boro.	0	5	0	0	0	0	0	0	0	0	0	5
Hummelstown Boro.	21	1	30	4	94	1	0	0	1	2	0	154
Jackson Twp.	3	2	1	1	2	2	2	3	0	7	3	26
Jefferson Twp.	0	0	1	1	1	1	0	0	0	0	1	5
Londonderry Twp.	21	3	4	5	2	8	7	7	5	3	3	68
Lower Paxton Twp.	109	108	120	180	213	199	382	382	269	182	101	2,245
Lower Swatara Twp.	11	61	9	3	7	109	14	8	12	16	132	382
Lykens Boro.	0	0	0	28	0	0	0	0	1	0	1	30
Lykens Twp.	2	4	3	*	2	5	1	2	2	1	6	28
Middle Paxton Twp.	7	8	11	9	0	*	9	0	16	7	13	80
Middletown Boro.	1	14	74	3	4	161	33	32	29	14	12	377
Mifflin Twp.	3	2	2	1	0	0	0	0	0	2	0	10
Millersburg Boro.	1	1	2	1	0	0	0	0	9	0	9	23
Paxtang Boro.	0	0	0	0	0	15	14	13	4	15	0	61
Penbrook Boro.	0	0	0	0	0	0	0	0	1	0	0	1
Pillow Boro.	0	0	0	0	0	1	0	0	NA	NA	NA	1
Reed Twp.	0	1	0	0	0	0	1	0	1	0	0	3
Royalton Boro.	4	0	0	0	1	0	2	2	0	0	0	9
Rush Twp.	0	0	0	*	0	0	0	0	0	0	0	0
South Hanover Twp.	42	28	40	29	21	18	8	3	16	14	14	233
Steelton Boro.	2	1	0	0	0	0	*	28	47	57	0	135
Susquehanna Twp.	53	105	135	69	11	26	29	29	62	328	341	1,188
Swatara Twp.	107	73	52	27	53	109	35	81	11	6	6	560
Upper Paxton Twp.	9	13	11	4	18	2	10	9	6	1	4	87
Washington Twp.	1	1	2	2	0	1	2	3	1	0	1	14
Wayne Twp.	2	2	2	1	0	5	0	0	5	5	2	24
West Hanover Twp.	48	29	104	201	45	48	59	62	73	65	72	806
Wiconisco Twp.	1	0	0	1	2	0	0	0	1	0	1	6
Williams Twp.	1	1	0	0	0	2	0	0	1	0	1	6
Williamstown Boro.	0	0	0	0	0	0	0	0	0	0	0	0
<b>TOTAL</b>	<b>510</b>	<b>518</b>	<b>656</b>	<b>626</b>	<b>557</b>	<b>804</b>	<b>723</b>	<b>716</b>	<b>675</b>	<b>784</b>	<b>905</b>	<b>5,785</b>

\* No response / Not available

### Dauphin County Total New Dwelling Units 2013-2023



*Village of Pineford apartment complex, Middletown Boro., Dauphin County*

**TABLE D-4  
NEW RESIDENTIAL UNIT CONSTRUCTION COSTS  
DAUPHIN COUNTY 2023 (Part 1 of 2)**

MUNICIPALITY	SINGLE-FAMILY		SEMI-DETACHED		MULTI-FAMILY		TOWNHOUSES	
	TOTAL COST	AVERAGE COST	TOTAL COST	AVERAGE COST	TOTAL COST	AVERAGE COST	TOTAL COST	AVERAGE COST
Berrysburg Boro.	\$0	\$0	\$0	\$0	\$0	\$0	\$0	\$0
Conewago Twp.	\$500,000	\$250,000	\$0	\$0	\$0	\$0	\$0	\$0
Dauphin Boro.	\$0	\$0	\$0	\$0	\$0	\$0	\$0	\$0
Derry Twp.	\$6,474,493	\$719,388	\$910,000	\$130,000	\$0	\$0	\$1,343,600	\$167,950
East Hanover Twp.	\$2,976,500	\$496,083	\$0	\$0	\$0	\$0	\$1,195,000	\$119,500
Elizabethville Boro.	\$0	\$0	\$0	\$0	\$0	\$0	\$0	\$0
Gratz Boro.	\$0	\$0	\$0	\$0	\$0	\$0	\$0	\$0
Halifax Boro.	\$0	\$0	\$0	\$0	\$0	\$0	\$681,369	\$170,342
Halifax Twp.	\$1,206,816	\$402,272	\$0	\$0	\$0	\$0	\$0	\$0
Harrisburg City	\$0	\$0	\$0	\$0	\$19,283,539	\$162,047	\$0	\$0
Highspire Boro.	\$0	\$0	\$0	\$0	\$0	\$0	\$0	\$0
Hummelstown Boro.	\$0	\$0	\$0	\$0	\$0	\$0	\$0	\$0
Jackson Twp.	\$652,000	\$217,333	\$0	\$0	\$0	\$0	\$0	\$0
Jefferson Twp.	\$522,500	\$522,500	\$0	\$0	\$0	\$0	\$0	\$0
Londonderry Twp.	\$1,539,000	\$513,000	\$0	\$0	\$0	\$0	\$0	\$0
Lower Paxton Twp.	\$16,816,165	\$258,710	\$0	\$0	\$0	\$0	\$6,888,175	\$191,338
Lower Swatara Twp.	\$1,323,000	\$165,375	\$0	\$0	\$19,449,688	\$173,657.93	\$945,629	\$135,090
Lykens Boro.	\$30,000	\$30,000	\$0	\$0	\$0	\$0	\$0	\$0
Lykens Twp.	\$1,330,540	\$266,108	\$0	\$0	\$0	\$0	\$0	\$0
Middle Paxton Twp.	\$6,127,948	\$510,662	\$0	\$0	\$0	\$0	\$0	\$0
Middletown Boro.	\$1,496,657	\$249,443	\$0	\$0	\$0	\$0	\$6,080,000	\$1,013,333
Mifflin Twp.	\$0	\$0	\$0	\$0	\$0	\$0	\$0	\$0
Millersburg Boro.	\$107,075	\$11,897	\$0	\$0	\$0	\$0	\$0	\$0
Paxtang Boro.	\$0	\$0	\$0	\$0	\$0	\$0	\$0	\$0
Penbrook Boro.	\$0	\$0	\$0	\$0	\$0	\$0	\$0	\$0
Pillow Boro. *	\$0	\$0	\$0	\$0	\$0	\$0	\$0	\$0
Reed Twp.	\$0	\$0	\$0	\$0	\$0	\$0	\$0	\$0
Royalton Boro.	\$0	\$0	\$0	\$0	\$0	\$0	\$0	\$0
Rush Twp.	\$0	\$0	\$0	\$0	\$0	\$0	\$0	\$0
South Hanover Twp.	\$11,527,115	\$886,701	\$0	\$0	\$0	\$0	\$0	\$0
Steelton Boro.	\$0	\$0	\$0	\$0	\$0	\$0	\$0	\$0
Susquehanna Twp.	\$16,687,632	\$241,850	\$0	\$0	\$11,710,500	\$81,322.92	\$13,905,621	\$108,638
Swatara Twp.	\$1,070,977	\$178,496	\$0	\$0	\$0	\$0	\$0	\$0
Upper Paxton Twp.	\$1,288,000	\$322,000	\$0	\$0	\$0	\$0	\$0	\$0
Washington Twp.	\$475,000	\$475,000	\$0	\$0	\$0	\$0	\$0	\$0
Wayne Twp.	\$471,900	\$235,950	\$0	\$0	\$0	\$0	\$0	\$0
West Hanover Twp.	\$6,539,240	\$726,582	\$0	\$0	\$0	\$0	\$9,699,032	\$153,953
Wiconisco Twp.	\$0	\$0	\$0	\$0	\$0	\$0	\$0	\$0
Williams Twp.	\$450,000	\$450,000	\$0	\$0	\$0	\$0	\$0	\$0
Williamstown Boro.	\$0	\$0	\$0	\$0	\$0	\$0	\$0	\$0
<b>TOTAL</b>	<b>\$79,612,558</b>	<b>\$334,507</b>	<b>\$910,000</b>	<b>\$130,000</b>	<b>\$50,443,727</b>	<b>\$134,517</b>	<b>\$40,738,426</b>	<b>\$155,490</b>

\* No response

**TABLE D-4  
NEW RESIDENTIAL UNIT CONSTRUCTION COSTS  
DAUPHIN COUNTY 2023 (Part 2 of 2)**

MUNICIPALITY	MOBILE HOMES		APARTMENT CONVERSIONS		REHABBED HOUSING		TOTAL RESIDENTIAL CONSTRUCTION COSTS
	TOTAL COST	AVERAGE COST	TOTAL COST	AVERAGE COST	TOTAL COST	AVERAGE COST	
Berrysburg Boro.	\$0	\$0	\$0	\$0	\$0	\$0	\$0
Conewago Twp.	\$500,000	\$62,500	\$0	\$0	\$0	\$0	\$0
Dauphin Boro.	\$0	\$0	\$0	\$0	\$0	\$0	\$0
Derry Twp.	\$0	\$0	\$0	\$0	\$0	\$0	\$8,728,093
East Hanover Twp.	\$90,000	\$45,000	\$0	\$0	\$0	\$0	\$4,261,500
Elizabethville Boro.	\$0	\$0	\$0	\$0	\$0	\$0	\$0
Gratz Boro.	\$0	\$0	\$0	\$0	\$0	\$0	\$0
Halifax Boro.	\$0	\$0	\$0	\$0	\$0	\$0	\$0
Halifax Twp.	\$408,000	\$102,000	\$0	\$0	\$0	\$0	\$1,614,816
Harrisburg City	\$0	\$0	\$0	\$0	\$3,578,232	\$36,144	\$22,861,771
Highspire Boro.	\$0	\$0	\$0	\$0	\$0	\$0	\$0
Hummelstown Boro.	\$0	\$0	\$0	\$0	\$0	\$0	\$0
Jackson Twp.	\$0	\$0	\$0	\$0	\$0	\$0	\$652,000
Jefferson Twp.	\$0	\$0	\$0	\$0	\$0	\$0	\$522,500
Londonderry Twp.	\$0	\$0	\$0	\$0	\$0	\$0	\$1,539,000
Lower Paxton Twp.	\$0	\$0	\$0	\$0	\$0	\$0	\$23,704,340
Lower Swatara Twp.	\$484,900	\$96,980	\$0	\$0	\$0	\$0	\$22,203,217
Lykens Boro.	\$0	\$0	\$0	\$0	\$0	\$0	\$30,000
Lykens Twp.	\$10,000	\$10,000	\$0	\$0	\$0	\$0	\$1,340,540
Middle Paxton Twp.	\$80,000	\$80,000	\$0	\$0	\$0	\$0	\$6,207,948
Middletown Boro.	\$0	\$0	\$0	\$0	\$154,700	\$25,783	\$7,731,357
Mifflin Twp.	\$0	\$0	\$0	\$0	\$0	\$0	\$0
Millersburg Boro.	\$0	\$0	\$0	\$0	\$0	\$0	\$107,075
Paxtang Boro.	\$0	\$0	\$0	\$0	\$0	\$0	\$0
Penbrook Boro.	\$0	\$0	\$0	\$0	\$0	\$0	\$0
Pillow Boro. *	\$0	\$0	\$0	\$0	\$0	\$0	\$0
Reed Twp.	\$0	\$0	\$0	\$0	\$0	\$0	\$0
Royalton Boro.	\$0	\$0	\$0	\$0	\$0	\$0	\$0
Rush Twp.	\$0	\$0	\$0	\$0	\$0	\$0	\$0
South Hanover Twp.	\$164,628	\$164,628	\$0	\$0	\$0	\$0	\$11,691,743
Steelton Boro.	\$0	\$0	\$0	\$0	\$80,000	\$40,000	\$80,000
Susquehanna Twp.	\$0	\$0	\$0	\$0	\$1,451,539	\$181,442	\$43,755,292
Swatara Twp.	\$0	\$0	\$0	\$0	\$0	\$0	\$1,070,977
Upper Paxton Twp.	\$0	\$0	\$0	\$0	\$0	\$0	\$1,288,000
Washington Twp.	\$0	\$0	\$0	\$0	\$0	\$0	\$475,000
Wayne Twp.	\$0	\$0	\$0	\$0	\$0	\$0	\$471,900
West Hanover Twp.	\$0	\$0	\$0	\$0	\$0	\$0	\$16,238,272
Wiconisco Twp.	\$3,100	\$3,100	\$0	\$0	\$0	\$0	\$3,100
Williams Twp.	\$0	\$0	\$0	\$0	\$0	\$0	\$450,000
Williamstown Boro.	\$0	\$0	\$0	\$0	\$0	\$0	\$0
<b>TOTAL</b>	<b>\$1,740,628</b>	<b>\$75,679</b>	<b>\$0</b>	<b>\$0</b>	<b>\$5,264,471</b>	<b>\$45,778</b>	<b>\$178,709,810</b>

\* No response

**TABLE D-5  
COMMERCIAL, INDUSTRIAL & PUBLIC FACILITY CONSTRUCTION COSTS  
DAUPHIN COUNTY 2023  
(Part 1 of 3)**

MUNICIPALITY	COMMERCIAL						
	NEW ESTABLISHMENTS			IMPROVEMENTS / EXPANSIONS			TOTAL
	NO.	TOTAL COST	AVERAGE COST	NO.	TOTAL COST	AVERAGE COST	
Berrysburg Boro.	0	\$0	\$0	1	\$4,000	\$4,000	\$4,000
Conewago Twp.	0	\$0	\$0	0	\$0	\$0	\$0
Dauphin Boro.	0	\$0	\$0	0	\$0	\$0	\$0
Derry Twp.	4	\$47,010,000	\$11,752,500	89	\$26,983,683	\$303,187	\$73,993,683
East Hanover Twp.	0	\$0	\$0	3	\$127,475	\$42,492	\$127,475
Elizabethville Boro.	0	\$0	\$0	0	\$0	\$0	\$0
Gratz Boro.	0	\$0	\$0	0	\$0	\$0	\$0
Halifax Boro.	0	0	0	0	0	0	0
Halifax Twp.	2	\$681,580	\$340,790	3	\$130,000	\$43,333	\$811,580
Harrisburg City	2	\$1,951,284	\$975,642	33	\$19,376,775	\$587,175	\$21,328,059
Highspire Boro.	0	\$0	\$0	0	\$0	\$0	\$0
Hummelstown Boro.	1	\$660,000	\$660,000	18	\$1,235,191	\$68,622	\$1,895,191
Jackson Twp.	0	\$0	\$0	0	\$0	\$0	\$0
Jefferson Twp.	0	\$0	\$0	0	\$0	\$0	\$0
Londonderry Twp.	0	\$0	\$0	0	\$0	\$0	\$0
Lower Paxton Twp.	8	\$9,993,532	\$1,249,192	77	\$26,986,183	\$350,470	\$36,979,715
Lower Swatara Twp.	3	\$4,822,400	\$1,607,467	16	\$2,758,145	\$172,384	\$7,580,545
Lykens Boro.	0	\$0	\$0	2	\$55,400	\$27,700	\$55,400
Lykens Twp.	2	\$210,000	\$105,000	5	\$1,438,000	\$287,600	\$1,648,000
Middle Paxton Twp.	0	\$0	\$0	0	\$0	\$0	\$0
Middletown Boro.	7	\$172,300	\$24,614	9	\$1,104,054	\$122,673	\$1,276,354
Mifflin Twp.	0	\$0	\$0	0	\$0	\$0	\$0
Millersburg Boro.	1	\$250,000	\$250,000	8	\$544,235	\$68,029	\$794,235
Paxtang Boro.	0	\$0	\$0	0	\$0	\$0	\$0
Penbrook Boro.	0	\$0	\$0	4	\$90,042	\$22,511	\$90,042
Pillow Boro. *	0	\$0	\$0	0	\$0	\$0	\$0
Reed Twp.	1	\$318,000	\$318,000	0	\$0	\$0	\$318,000
Royalton Boro.	0	\$0	\$0	0	\$0	\$0	\$0
Rush Twp.	0	\$0	\$0	0	\$0	\$0	\$0
South Hanover Twp.	0	\$0	\$0	4	\$164,628	\$41,157.00	\$164,628
Steelton Boro.	1	\$6,500,000	\$6,500,000	4	\$2,351,000	\$587,750	\$8,851,000
Susquehanna Twp.	9	\$0	\$0	0	\$0	\$0	\$0
Swatara Twp.	9	\$18,828,462	\$2,092,051	58	\$15,550,000	\$268,103	\$34,378,462
Upper Paxton Twp.	0	\$0	\$0	2	\$174,000	\$87,000	\$174,000
Washington Twp.	0	\$0	\$0	2	\$365,000	\$182,500	\$365,000
Wayne Twp.	0	\$0	\$0	0	\$0	\$0	\$0
West Hanover Twp.	2	\$3,465,000	\$1,732,500	15	\$6,610,353	\$440,690	\$10,075,353
Wiconisco Twp.	0	\$0	\$0	1	\$13,960	\$13,960	\$13,960
Williams Twp.	1	\$0	\$0	0	\$0	\$0	\$0
Williamstown Boro.	1	\$75,391	\$75,391	0	\$0	\$0	\$75,391
<b>TOTAL</b>	<b>54</b>	<b>\$94,937,949</b>	<b>\$1,758,110</b>	<b>354</b>	<b>\$106,062,124</b>	<b>\$299,611</b>	<b>\$201,000,073</b>

\* No response

**TABLE D-5  
COMMERCIAL, INDUSTRIAL & PUBLIC FACILITY CONSTRUCTION COSTS  
DAUPHIN COUNTY 2023  
(Part 2 of 3)**

MUNICIPALITY	INDUSTRIAL						
	NEW ESTABLISHMENTS			IMPROVEMENTS / EXPANSIONS			TOTAL
	NO.	TOTAL COST	AVERAGE COST	NO.	TOTAL COST	AVERAGE COST	
Berrysburg Boro.	0	\$0	\$0	0	\$0	\$0	\$0
Conewago Twp.	0	\$0	\$0	0	\$0	\$0	\$0
Dauphin Boro.	0	\$0	\$0	0	\$0	\$0	\$0
Derry Twp.	1	\$100,000,100	\$100,000,100	0	\$0	\$0	\$100,000,100
East Hanover Twp.	0	\$0	\$0	0	\$0	\$0	\$0
Elizabethville Boro.	0	\$0	\$0	0	\$0	\$0	\$0
Gratz Boro.	0	\$0	\$0	0	\$0	\$0	\$0
Halifax Boro.	0	0	0	0	0	0	0
Halifax Twp.	1	\$1,604,081	\$1,604,081	0	\$0	\$0	\$1,604,081
Harrisburg City	0	\$0	\$0	0	\$0	\$0	\$0
Highspire Boro.	0	\$0	\$0	0	\$0	\$0	\$0
Hummelstown Boro.	0	\$0	\$0	0	\$0	\$0	\$0
Jackson Twp.	0	\$0	\$0	0	\$0	\$0	\$0
Jefferson Twp.	0	\$0	\$0	0	\$0	\$0	\$0
Londonderry Twp.	0	\$0	\$0	10	\$18,361,171	\$1,836,117	\$18,361,171
Lower Paxton Twp.	0	\$0	\$0	0	\$0	\$0	\$0
Lower Swatara Twp.	1	\$1,612,800	\$1,612,800	0	\$0	\$0	\$1,612,800
Lykens Boro.	0	\$0	\$0	0	\$0	\$0	\$0
Lykens Twp.	0	\$0	\$0	0	\$0	\$0	\$0
Middle Paxton Twp.	0	\$0	\$0	0	\$0	\$0	\$0
Middletown Boro.	0	\$0	\$0	2	\$625,000	\$312,500	\$625,000
Mifflin Twp.	0	\$0	\$0	0	\$0	\$0	\$0
Millersburg Boro.	0	\$0	\$0	0	\$0	\$0	\$0
Paxtang Boro.	0	\$0	\$0	0	\$0	\$0	\$0
Penbrook Boro.	0	\$0	\$0	0	\$0	\$0	\$0
Pillow Boro. *	0	\$0	\$0	0	\$0	\$0	\$0
Reed Twp.	0	\$0	\$0	0	\$0	\$0	\$0
Royalton Boro.	0	\$0	\$0	0	\$0	\$0	\$0
Rush Twp.	0	\$0	\$0	0	\$0	\$0	\$0
South Hanover Twp.	0	\$0	\$0	0	\$0	\$0	\$0
Steelton Boro.	0	\$0	\$0	0	\$0	\$0	\$0
Susquehanna Twp.	0	\$0	\$0	0	\$0	\$0	\$0
Swatara Twp.	0	\$0	\$0	0	\$0	\$0	\$0
Upper Paxton Twp.	0	\$0	\$0	0	\$0	\$0	\$0
Washington Twp.	0	\$0	\$0	0	\$0	\$0	\$0
Wayne Twp.	0	\$0	\$0	0	\$0	\$0	\$0
West Hanover Twp.	0	\$0	\$0	0	\$0	\$0	\$0
Wiconisco Twp.	0	\$0	\$0	0	\$0	\$0	\$0
Williams Twp.	0	\$0	\$0	0	\$0	\$0	\$0
Williamstown Boro.	0	\$0	\$0	0	\$0	\$0	\$0
<b>TOTAL</b>	<b>3</b>	<b>\$103,216,981</b>	<b>\$34,405,660</b>	<b>12</b>	<b>\$18,986,171</b>	<b>\$1,726,016</b>	<b>\$122,203,152</b>

\* No response

**TABLE D-5  
COMMERCIAL, INDUSTRIAL & PUBLIC FACILITY CONSTRUCTION COSTS  
DAUPHIN COUNTY 2023  
(Part 3 of 3)**

MUNICIPALITY	CHURCHES, SCHOOLS & PUBLIC FACILITIES						
	NEW ESTABLISHMENTS			IMPROVEMENTS / EXPANSIONS			TOTAL
	NO.	TOTAL COST	AVERAGE COST	NO.	TOTAL COST	AVERAGE COST	
Berrysburg Boro.	0	\$0	\$0	0	\$0	\$0	\$0
Conewago Twp.	0	\$0	\$0	1	\$3,000	\$3,000	\$3,000
Dauphin Boro.	0	\$0	\$0	0	\$0	\$0	\$0
Derry Twp.	0	\$0	\$0	0	\$0	\$0	\$0
East Hanover Twp.	1	\$270,000	\$270,000	1	\$400,000	\$400,000	\$670,000
Elizabethville Boro.	0	\$0	\$0	0	\$0	\$0	\$0
Gratz Boro.	0	\$0	\$0	0	\$0	\$0	\$0
Halifax Boro.	0	0	0	0	0	0	0
Halifax Twp.	1	\$130,000	\$130,000	2	\$68,000	\$34,000	\$198,000
Harrisburg City	1	\$2,000,000	\$2,000,000	3	\$6,604,617	\$2,201,539	\$8,604,617
Highspire Boro.	0	\$0	\$0	0	\$0	\$0	\$0
Hummelstown Boro.	0	\$0	\$0	0	\$0	\$0	\$0
Jackson Twp.	0	\$0	\$0	0	\$0	\$0	\$0
Jefferson Twp.	0	\$0	\$0	0	\$0	\$0	\$0
Londonderry Twp.	0	\$0	\$0	0	\$0	\$0	\$0
Lower Paxton Twp.	0	\$0	\$0	6	\$2,690,965	\$448,494	\$2,690,965
Lower Swatara Twp.	1	\$18,236,000	\$18,236,000	0	\$0	\$0	\$18,236,000
Lykens Boro.	0	\$0	\$0	0	\$0	\$0	\$0
Lykens Twp.	0	\$0	\$0	0	\$0	\$0	\$0
Middle Paxton Twp.	0	\$0	\$0	0	\$0	\$0	\$0
Middletown Boro.	0	\$0	\$0	5	\$170,293	\$34,059	\$170,293
Mifflin Twp.	0	\$0	\$0	0	\$0	\$0	\$0
Millersburg Boro.	0	\$0	\$0	0	\$0	\$0	\$0
Paxtang Boro.	0	\$0	\$0	0	\$0	\$0	\$0
Penbrook Boro.	0	\$0	\$0	0	\$0	\$0	\$0
Pillow Boro. *	0	\$0	\$0	0	\$0	\$0	\$0
Reed Twp.	0	\$0	\$0	0	\$0	\$0	\$0
Royalton Boro.	0	\$0	\$0	0	\$0	\$0	\$0
Rush Twp.	0	\$0	\$0	0	\$0	\$0	\$0
South Hanover Twp.	0	\$0	\$0	9	\$683,200	\$75,911	\$683,200
Steelton Boro.	0	\$0	\$0	0	\$0	\$0	\$0
Susquehanna Twp.	0	\$0	\$0	1	\$438,710	\$438,710	\$438,710
Swatara Twp.	0	\$0	\$0	0	\$0	\$0	\$0
Upper Paxton Twp.	0	\$0	\$0	0	\$0	\$0	\$0
Washington Twp.	0	\$0	\$0	0	\$0	\$0	\$0
Wayne Twp.	0	\$0	\$0	0	\$0	\$0	\$0
West Hanover Twp.	0	\$0	\$0	2	\$341,750	\$170,875	\$0
Wiconisco Twp.	0	\$0	\$0	0	\$0	\$0	\$0
Williams Twp.	0	\$0	\$0	0	\$0	\$0	\$0
Williamstown Boro.	0	\$0	\$0	0	\$0	\$0	\$0
<b>TOTAL</b>	<b>4</b>	<b>\$20,636,000</b>	<b>\$5,159,000</b>	<b>30</b>	<b>\$11,400,535</b>	<b>\$380,018</b>	<b>\$32,036,535</b>

\* No response / Not available



**TABLE D-6  
NEW COMMERCIAL ESTABLISHMENTS  
(based on issued building permits)  
DAUPHIN COUNTY  
2013-2023**

MUNICIPALITY	2013	2014	2015	2016	2017	2018	2019	2020	2021	2022	2023	TOTAL
Berrysburg Boro.	0	0	0	0	0	0	0	0	0	0	0	0
Conewago Twp.	0	0	0	0	0	*	0	0	0	*	0	0
Dauphin Boro.	0	0	0	0	0	0	0	0	0	0	0	0
Derry Twp.	1	0	3	4	4	15	7	7	1	0	4	46
East Hanover Twp.	0	1	1	2	2	1	1	0	0	1	0	9
Elizabethville Boro.	0	0	0	0	0	0	0	0	0	0	0	0
Gratz Boro.	0	0	0	0	0	0	0	0	0	*	0	0
Halifax Boro.	0	0	0	0	0	0	0	*	*	*	0	0
Halifax Twp.	0	1	0	2	1	2	0	0	0	1	2	9
Harrisburg City	0	3	1	3	3	3	3	0	2	0	2	20
Higspire Boro.	0	0	0	0	0	0	0	0	0	0	0	0
Hummelstown Boro.	9	12	10	2	2	0	5	5	10	1	1	57
Jackson Twp.	0	0	0	0	0	1	0	0	1	0	0	2
Jefferson Twp.	0	0	0	0	0	0	0	0	0	0	0	0
Londonderry Twp.	0	3	1	0	0	0	0	0	2	0	0	6
Lower Paxton Twp.	12	2	0	2	2	6	5	5	7	8	8	57
Lower Swatara Twp.	2	6	3	5	5	4	7	9	3	3	3	50
Lykens Boro.	0	0	0	0	0	0	0	0	0	2	0	2
Lykens Twp.	0	0	0	0	0	0	0	0	0	1	2	3
Middle Paxton Twp.	0	1	0	0	0	*	1	*	0	0	0	2
Middletown Boro.	0	2	2	4	4	2	6	0	1	0	7	28
Mifflin Twp.	0	0	1	1	1	0	0	0	0	0	0	3
Millersburg Boro.	1	0	0	0	0	0	0	0	0	2	1	4
Paxtang Boro.	0	0	0	0	0	0	0	1	0	0	0	1
Penbrook Boro.	2	0	0	0	0	0	0	0	0	0	0	2
Pillow Boro.	0	0	0	0	0	0	0	0	0	0	*	0
Reed Twp.	0	0	0	0	0	2	0	0	0	1	1	4
Royalton Boro.	0	0	5	0	0	0	0	0	0	0	0	5
Rush Twp.	0	0	0	0	0	0	0	0	0	0	0	0
South Hanover Twp.	4	0	2	1	0	13	2	0	0	0	0	22
Steelton Boro.	0	0	0	0	3	0	*	2	0	1	1	7
Susquehanna Twp.	1	1	4	3	3	2	3	3	8	6	9	43
Swatara Twp.	4	9	7	15	15	2	13	3	5	0	9	82
Upper Paxton Twp.	0	0	0	0	0	0	0	0	1	0	0	1
Washington Twp.	0	1	1	0	0	0	0	1	0	1	0	4
Wayne Twp.	0	0	1	0	0	0	0	0	0	0	0	1
West Hanover Twp.	1	0	4	0	0	0	1	2	0	4	2	14
Wiconisco Twp.	0	2	0	0	0	0	0	0	0	0	0	2
Williams Twp.	0	0	0	0	0	0	0	0	0	0	1	1
Williamstown Boro.	0	0	0	0	0	0	0	0	0	0	1	1
<b>TOTAL</b>	<b>37</b>	<b>44</b>	<b>46</b>	<b>44</b>	<b>45</b>	<b>53</b>	<b>54</b>	<b>38</b>	<b>41</b>	<b>32</b>	<b>54</b>	<b>488</b>

\* No response / Not available

**TABLE D-7  
NEW INDUSTRIAL ESTABLISHMENTS  
(based on issued building permits)  
DAUPHIN COUNTY  
2013-2023**

MUNICIPALITY	2013	2014	2015	2016	2017	2018	2019	2020	2021	2022	2023	TOTAL
Berrysburg Boro.	0	0	0	0	0	0	0	0	0	0	0	0
Conewago Twp.	0	0	0	0	0	*	0	0	*	*	0	0
Dauphin Boro.	0	0	0	0	0	0	0	0	0	0	0	0
Derry Twp.	0	0	0	2	1	0	2	2	1	0	1	9
East Hanover Twp.	0	0	0	0	0	0	0	0	0	0	0	0
Elizabethville Boro.	0	0	0	0	0	0	0	0	0	0	0	0
Gratz Boro.	0	0	1	0	0	0	0	0	0	*	0	1
Halifax Boro.	0	0	0	0	0	0	0	*	*	*	0	0
Halifax Twp.	0	0	0	0	0	0	0	0	1	0	1	2
Harrisburg City	0	0	0	0	0	1	0	0	0	0	0	1
Highspire Boro.	0	0	0	0	0	0	0	0	0	0	0	0
Hummelstown Boro.	0	0	0	0	0	0	0	0	0	0	0	0
Jackson Twp.	0	0	0	0	0	0	0	0	0	0	0	0
Jefferson Twp.	0	0	0	0	0	0	0	0	0	0	0	0
Londonderry Twp.	0	0	0	0	0	0	0	0	0	4	0	0
Lower Paxton Twp.	0	0	0	0	0	0	0	0	0	0	0	0
Lower Swatara Twp.	0	2	0	2	2	0	*	0	1	0	1	7
Lykens Boro.	0	0	0	0	0	0	0	0	0	0	0	0
Lykens Twp.	0	0	0	1	1	0	0	1	0	0	0	3
Middle Paxton Twp.	0	0	0	0	0	*	0	*	0	0	0	0
Middletown Boro.	0	0	0	0	0	0	0	0	0	0	0	0
Mifflin Twp.	0	0	0	0	0	0	1	0	0	0	0	1
Millersburg Boro.	0	0	0	0	0	0	0	0	0	0	0	0
Paxtang Boro.	0	0	0	0	0	0	0	0	0	0	0	0
Penbrook Boro.	0	0	0	0	0	0	0	0	0	0	0	0
Pillow Boro.	0	0	0	0	0	0	0	0	0	0	0	0
Reed Twp.	0	0	0	0	0	0	0	0	0	0	0	0
Royalton Boro.	0	0	0	0	0	0	0	0	0	0	0	0
Rush Twp.	0	0	0	0	0	0	0	0	0	0	0	0
South Hanover Twp.	1	0	0	0	0	0	0	0	0	0	0	1
Steelton Boro.	0	0	2	0	0	0	*	0	0	0	0	2
Susquehanna Twp.	0	0	1	0	0	0	0	0	0	0	0	1
Swatara Twp.	0	0	0	0	0	0	0	0	0	0	0	0
Upper Paxton Twp.	0	0	0	0	0	0	0	0	0	0	0	0
Washington Twp.	0	0	0	0	0	0	0	0	0	0	0	0
Wayne Twp.	0	0	0	0	0	0	0	0	0	0	0	0
West Hanover Twp.	0	0	0	0	0	0	0	0	0	0	0	0
Wiconisco Twp.	0	0	0	0	0	0	0	0	0	0	0	0
Williams Twp.	0	0	0	0	0	0	0	0	0	0	0	0
Williamstown Boro.	0	0	0	0	0	0	0	0	0	0	0	0
<b>TOTAL</b>	<b>1</b>	<b>2</b>	<b>4</b>	<b>5</b>	<b>4</b>	<b>1</b>	<b>3</b>	<b>3</b>	<b>3</b>	<b>4</b>	<b>3</b>	<b>26</b>

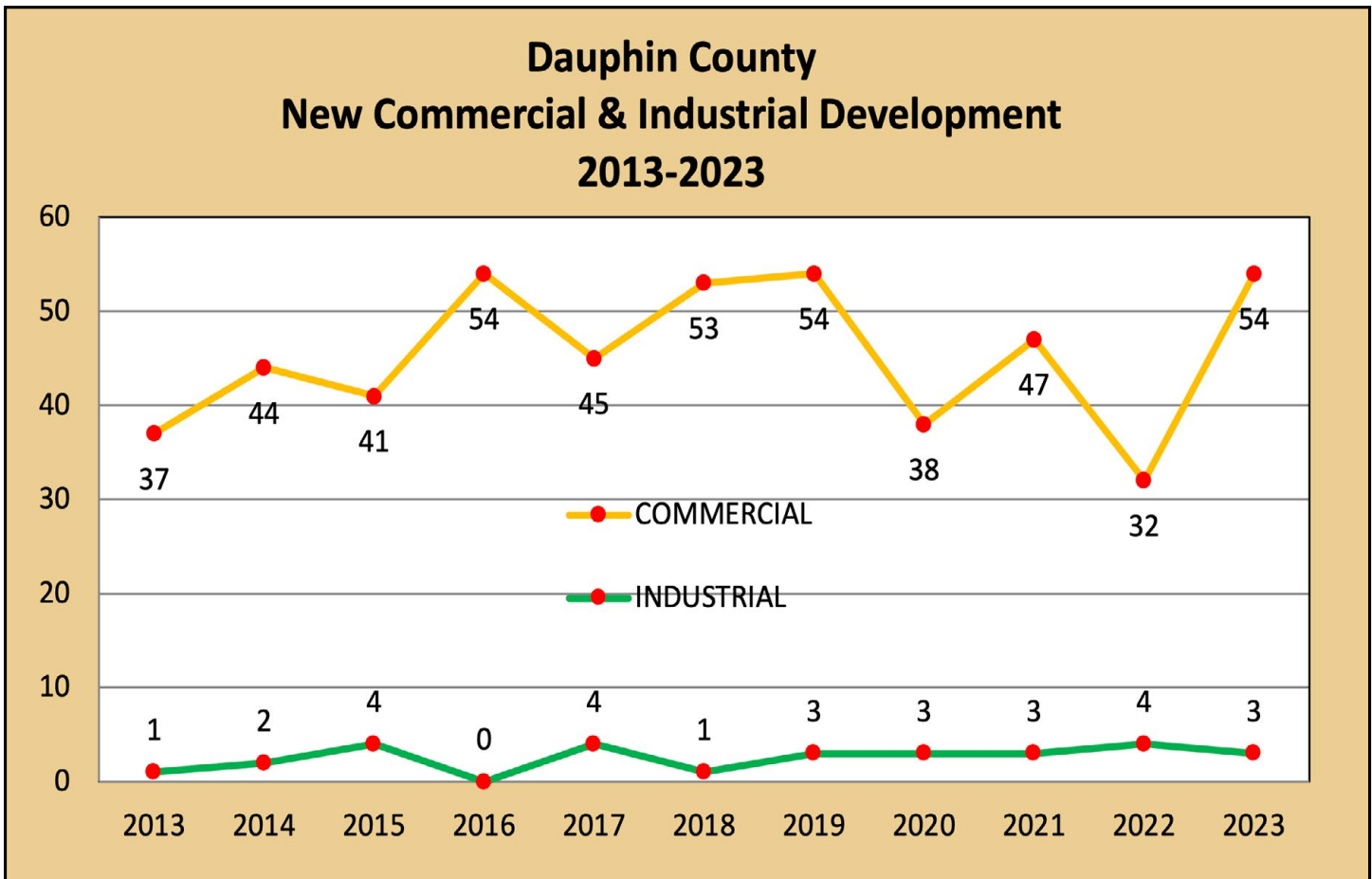
\* No response / Not available

Permits issued by PA Dept. of Labor & Industry

**TABLE D-8  
COMMERCIAL & INDUSTRIAL ESTIMATED CONSTRUCTION COSTS  
(based on issued building permits)  
DAUPHIN COUNTY  
2013-2023**

YEAR	COMMERCIAL				INDUSTRIAL			
	NEW ESTABLISHMENTS		IMPROVEMENTS / EXPANSIONS		NEW ESTABLISHMENTS		IMPROVEMENTS / EXPANSIONS	
	# PERMITS	ESTIMATED CONSTRUCTION COSTS	# PERMITS	ESTIMATED CONSTRUCTION COSTS	# PERMITS	ESTIMATED CONSTRUCTION COSTS	# PERMITS	ESTIMATED CONSTRUCTION COSTS
2013	37	\$21,108,677	586	\$143,242,424	1	\$792,063	16	\$2,292,705
2014	44	\$28,430,365	498	\$75,570,102	2	\$8,264,708	29	\$3,346,364
2015	41	\$58,240,521	527	\$74,722,837	4	\$1,507,637	24	\$4,635,407
2016	54	\$30,401,134	506	\$78,346,783	0	\$0	15	\$4,348,791
2017	45	\$26,530,921	485	\$132,276,443	4	\$4,711,035	30	\$19,611,855
2018	53	\$120,630,048	578	\$78,251,109	1	\$185,000	23	\$25,574,803
2019	54	\$58,216,821	588	\$112,491,717	3	\$8,421,100	28	\$6,609,090
2020	38	\$94,028,303	369	\$113,431,135	3	\$8,304,100	18	\$6,814,876
2021	47	\$94,028,303	398	\$77,902,738	2	\$3,125,000	17	\$3,172,247
2022	32	\$94,028,303	398	\$77,907,738	2	\$3,125,000	17	\$3,172,247
2023	54	\$94,937,949	354	\$106,062,124	3	\$103,216,981	12	\$18,986,171

Note: In some years not all municipalities responded.



# PERRY COUNTY



*Stone Mill Estates,  
Penn Twp., Perry County*

**TABLE P-1  
NEW DWELLING UNITS / COMMERCIAL / INDUSTRIAL / PUBLIC FACILITY ESTABLISHMENTS  
(based on issued building permits)  
PERRY COUNTY 2023  
(Part 1 of 2)**

MUNICIPALITY	SINGLE FAMILY	SEMI-DETACHED	MULTI-FAMILY	TOWN-HOUSES	MOBILE HOMES	APARTMENT CONVERSIONS	CABINS*	TOTAL NEW RESIDENTIAL UNITS
Blain Boro.	0	0	0	0	0	0	0	0
Bloomfield Boro.	0	0	0	0	0	0	0	0
Buffalo Twp.	2	0	0	0	0	0	0	2
Carroll Twp.	6	0	0	0	0	0	0	6
Centre Twp.	2	0	0	0	0	0	0	2
Duncannon Boro.	0	0	0	0	0	0	0	0
Greenwood Twp.	3	0	0	0	0	0	0	3
Howe Twp.	0	0	0	0	0	0	0	0
Jackson Twp.	1	0	0	0	0	0	0	1
Juniata Twp.	1	0	0	0	0	0	0	1
Landisburg Boro.	0	0	0	0	0	0	0	0
Liverpool Boro.	0	0	0	0	0	0	0	0
Liverpool Twp.	2	0	0	0	0	0	0	2
Marysville Boro.	13	0	0	0	0	0	0	13
Miller Twp.	3	0	0	0	2	0	0	5
Millerstown Boro.	0	0	0	0	0	0	0	0
New Buffalo Boro.	0	0	0	0	0	0	0	0
Newport Boro.	1	0	3	0	0	0	0	4
NE Madison Twp.	1	0	0	0	0	0	0	1
Oliver Twp.	0	0	0	0	1	0	0	1
Penn Twp.	1	9	0	0	0	0	0	10
Rye Twp.	1	0	0	0	0	0	0	1
Saville Twp.	1	0	0	0	0	0	0	1
SW Madison Twp.	2	0	0	0	0	0	0	2
Spring Twp.	2	0	0	0	0	0	0	2
Toboyne Twp.	0	0	0	0	0	0	0	0
Tuscarora Twp.	2	0	0	0	0	0	0	2
Tyrone Twp.	2	0	0	0	0	0	0	2
Watts Twp.	2	0	0	0	0	0	0	2
Wheatfield Twp.	2	0	0	0	0	0	0	2
<b>TOTAL</b>	<b>50</b>	<b>9</b>	<b>3</b>	<b>0</b>	<b>3</b>	<b>0</b>	<b>0</b>	<b>65</b>

Data collected from Perry County Assessment Office from permits received from Building Inspection Underwriters

\* Collected from UCC Recreational Cabin Affidavit information

**TABLE P-1  
NEW DWELLING UNITS / COMMERCIAL / INDUSTRIAL / PUBLIC FACILITY ESTABLISHMENTS  
(based on issued building permits)  
PERRY COUNTY 2023  
(Part 2 of 2)**

MUNICIPALITY	DWELLINGS DEMOLISHED	NET TOTAL NEW RESIDENTIAL UNITS	REHABBED HOUSING	NEW OR REHAB COMMERCIAL ESTABS.	NEW OR REHAB INDUSTRIAL ESTABS.	NEW OR REHAB PUBLIC FACILITY
Blain Boro.	0	0	0	0	0	0
Bloomfield Boro.	1	-1	0	1	0	2
Buffalo Twp.	0	2	0	0	0	0
Carroll Twp.	0	6	0	0	0	0
Centre Twp.	0	2	0	0	0	0
Duncannon Boro.	0	0	0	2	0	0
Greenwood Twp.	2	1	0	1	0	0
Howe Twp.	0	0	0	0	0	1
Jackson Twp.	1	0	0	0	0	0
Juniata Twp.	0	1	0	0	0	0
Landisburg Boro.	0	0	0	0	0	0
Liverpool Boro.	0	0	0	0	0	0
Liverpool Twp	0	2	0	2	0	0
Marysville Boro.	0	13	0	1	0	0
Miller Twp	0	5	0	0	0	0
Millerstown Boro.	0	0	0	0	0	0
New Buffalo Boro.	0	0	0	0	0	0
Newport Boro.	0	4	0	0	0	0
NE Madison Twp	0	1	0	0	0	0
Oliver Twp.	0	1	0	0	0	0
Penn Twp.	0	10	0	0	0	0
Rye Twp.	0	1	0	0	0	0
Saville Twp.	0	1	0	0	0	0
SW Madison Twp.	0	2	0	0	0	0
Spring Twp.	0	2	0	1	0	0
Toboyne Twp.	0	0	0	0	0	0
Tuscarora Twp.	0	2	0	0	0	0
Tyrone Twp.	1	1	0	0	0	0
Watts Twp.	0	2	0	0	0	0
Wheatfield Twp.	0	2	0	0	0	0
<b>TOTAL</b>	<b>5</b>	<b>60</b>	<b>0</b>	<b>8</b>	<b>0</b>	<b>3</b>

Data collected from Perry County Assessment Office from permits received from Building Inspection Underwriters

**TABLE P-2  
DWELLING UNITS BY TYPE  
(based on issued building permits)  
PERRY COUNTY  
1993-2023**

YEAR	SINGLE FAMILY	SEMI-DETACHED	MULTI-FAMILY APARTMENTS	TOWN-HOUSES	MOBILE HOMES	APARTMENT CONVERSIONS	CABINS*	TOTAL
1993	141	0	0	0	49	5	0	195
1994	167	0	63	12	69	0	0	311
1995	159	9	0	0	57	5	0	230
1996	159	2	0	14	70	0	0	245
1997	151	11	0	4	103	0	0	269
1998	174	8	12	9	79	0	0	282
1999	152	13	17	7	71	0	0	260
2000	145	15	3	5	80	1	0	249
2001	142	4	0	9	49	0	0	204
2002	187	0	0	30	40	0	0	257
2003	164	12	0	22	45	2	0	245
2004	198	15	2	36	40	0	0	291
2005	158	2	0	26	56	0	0	242
2006	110	1	0	0	15	0	0	126
2007	60	0	0	5	7	1	0	73
2008	58	1	0	10	17	1	0	87
2009	90	1	0	6	21	0	0	118
2010	93	0	0	1	6	1	0	101
2011	54	0	0	2	17	2	0	75
2012	19	0	0	0	10	0	0	29
2013	26	0	0	0	4	0	0	30
2014	84	0	0	0	12	0	0	96
2015	48	0	0	0	9	0	0	57
2016	67	9	3	0	11	0	0	90
2017	92	0	2	-1	15	0	0	108
2018	77	0	0	0	10	3	2	92
2019	66	0	0	0	7	0	3	76
2020	101	0	0	0	4	0	0	105
2021	114	0	0	0	5	0	0	119
2022	108	0	0	0	4	5	0	117
2023	50	9	3	0	3	0	0	65
<b>TOTALS</b>	<b>3,414</b>	<b>112</b>	<b>105</b>	<b>197</b>	<b>985</b>	<b>26</b>	<b>5</b>	<b>4,844</b>

Data collected from Perry County Assessment Office from permits received from Building Inspection Underwriters  
\* Collected from UCC Recreational Cabin Affidavit information

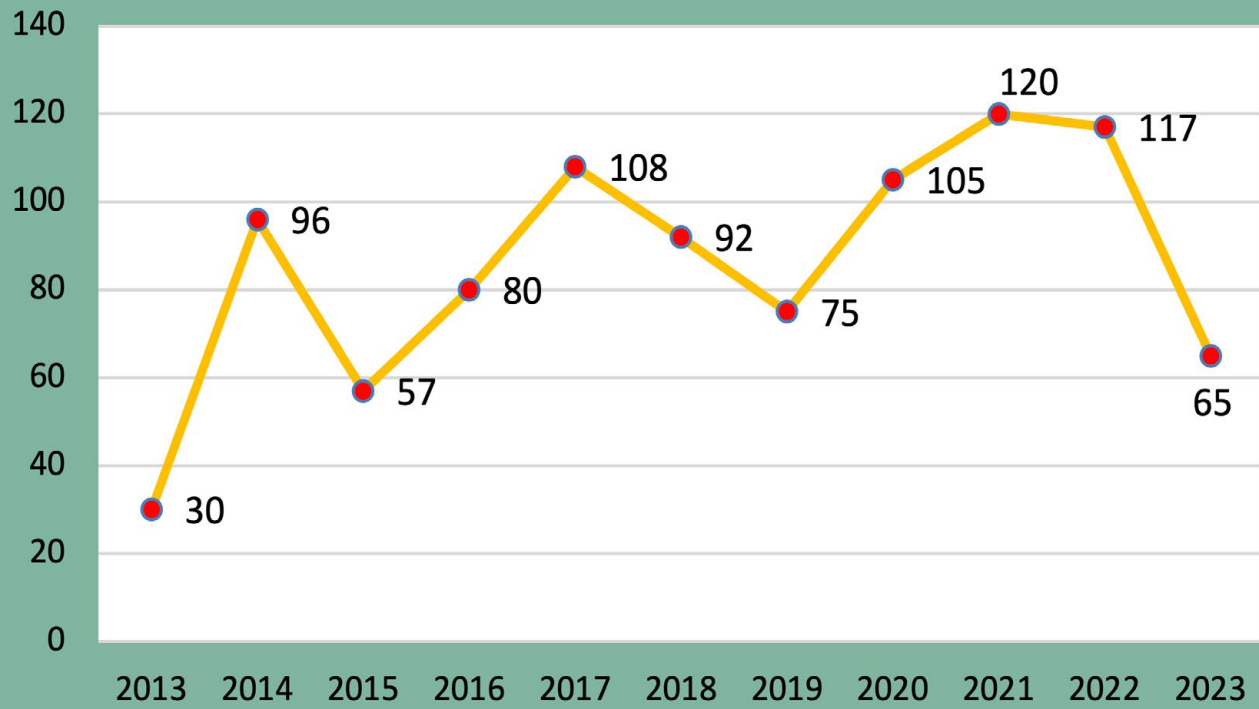
**TABLE P-3  
TOTAL NEW DWELLING UNITS  
(based on issued building permits)  
PERRY COUNTY  
2013-2023**

MUNICIPALITY	2013	2014	2015	2016	2017	2018	2019	2020	2021	2022	2023	TOTAL
Blain Boro.	0	0	0	0	1	0	0	0	0	0	0	1
Bloomfield Boro.	0	0	1	0	1	0	0	1	0	1	0	4
Buffalo Twp.	3	3	1	3	4	1	1	2	7	1	2	28
Carroll Twp.	7	17	11	11	9	8	14	17	21	9	6	130
Centre Twp.	3	7	8	5	3	7	2	9	11	8	2	65
Duncannon Boro.	0	0	0	0	0	0	0	0	0	0	0	0
Greenwood Twp.	0	6	0	3	2	1	0	2	1	3	3	21
Howe Twp.	0	0	0	0	0	2	0	0	2	0	0	4
Jackson Twp.	2	3	0	0	1	3	2	0	2	1	1	15
Juniata Twp.	2	2	1	1	2	1	3	5	3	3	1	24
Landisburg Boro.	0	0	0	0	0	0	0	0	0	0	0	0
Liverpool Boro.	0	0	1	1	0	1	1	0	0	0	0	4
Liverpool Twp.	1	6	1	0	6	2	2	0	5	5	2	30
Marysville Boro.	0	2	2	2	24	9	8	19	13	27	13	119
Miller Twp.	1	1	1	7	3	2	5	2	5	4	5	36
Millerstown Boro.	0	0	0	1	0	0	0	0	1	0	0	2
New Buffalo Boro.	0	0	0	0	0	0	0	0	0	0	0	0
Newport Boro.	0	0	0	0	0	0	0	0	0	0	4	0
NE Madison Twp.	0	0	0	1	1	3	3	2	6	1	1	18
Oliver Twp.	0	6	1	3	3	4	0	2	2	7	1	29
Penn Twp.	0	4	5	5	5	4	9	4	4	15	10	65
Rye Twp.	0	8	3	4	8	4	3	1	5	2	1	39
Saville Twp.	3	6	2	8	9	8	5	8	5	6	1	61
SW Madison Twp.	2	4	2	1	2	3	1	1	2	0	2	20
Spring Twp.	0	5	4	7	6	12	7	10	5	7	2	65
Toboyne Twp.	1	1	1	0	2	3*	2	6	4	1	0	21
Tuscarora Twp.	0	3	5	7	4	2	1	7	5	7	2	43
Tyrone Twp.	2	2	3	2	0	1	1	1	2	2*	2	17
Watts Twp.	1	3	3	3	4	2	2	4	5	5	2	34
Wheatfield Twp.	2	7	1	5	8	9	3	2	4	2	2	45
<b>COUNTY TOTALS</b>	<b>30</b>	<b>96</b>	<b>57</b>	<b>80</b>	<b>108</b>	<b>92</b>	<b>75</b>	<b>105</b>	<b>120</b>	<b>117</b>	<b>65</b>	<b>940</b>

\* Includes cabin affidavits



## Perry County Total New Dwelling Units 2013-2023



*Newport Boro. Square, Perry County*

**TABLE P-4  
NEW RESIDENTIAL UNIT CONSTRUCTION COSTS  
PERRY COUNTY 2023  
(Part 1 of 2)**

MUNICIPALITY	SINGLE-FAMILY		SEMI-DETACHED		MULTI-FAMILY		TOWNHOUSES	
	TOTAL COST	AVERAGE COST	TOTAL COST	AVERAGE COST	TOTAL COST	AVERAGE COST	TOTAL COST	AVERAGE COST
Blain Boro.	\$0	\$0	\$0	\$0	\$0	\$0	\$0	\$0
Bloomfield Boro.	\$0	\$0	\$0	\$0	\$0	\$0	\$0	\$0
Buffalo Twp.	\$455,800	\$227,900	\$0	\$0	\$0	\$0	\$0	\$0
Carroll Twp.	\$1,210,329	\$201,722	\$0	\$0	\$0	\$0	\$0	\$0
Centre Twp.	\$410,000	\$205,000	\$0	\$0	\$0	\$0	\$0	\$0
Duncannon Boro.	\$0	\$0	\$0	\$0	\$0	\$0	\$0	\$0
Greenwood Twp.	\$275,000	\$91,667	\$0	\$0	\$0	\$0	\$0	\$0
Howe Twp.	\$0	\$0	\$0	\$0	\$0	\$0	\$0	\$0
Jackson Twp.	*	*	\$0	\$0	\$0	\$0	\$0	\$0
Juniata Twp.	\$250,000	\$250,000.00	\$0	\$0	\$0	\$0	\$0	\$0
Landisburg Boro.	\$0	\$0	\$0	\$0	\$0	\$0	\$0	\$0
Liverpool Boro.	\$0	\$0	\$0	\$0	\$0	\$0	\$0	\$0
Liverpool Twp	\$650,000	\$325,000	\$0	\$0	\$0	\$0	\$0	\$0
Marysville Boro.	\$3,154,484	\$242,653	\$0	\$0	\$0	\$0	\$0	\$0
Miller Twp	*	\$0	\$0	\$0	\$0	\$0	\$0	\$0
Millerstown Boro.	\$0	\$0	\$0	\$0	\$0	\$0	\$0	\$0
New Buffalo Boro.	\$0	\$0	\$0	\$0	\$0	\$0	\$0	\$0
Newport Boro.	\$120,000	\$120,000	\$0	\$0	\$150,000	\$50,000	\$0	\$0
NE Madison Twp	\$395,000	\$395,000	\$0	\$0	\$0	\$0	\$0	\$0
Oliver Twp.	\$0	\$0	\$0	\$0	\$0	\$0	\$0	\$0
Penn Twp.	\$171,175	\$171,175	\$1,574,940	\$174,993	\$0	\$0	\$0	\$0
Rye Twp.	\$140,000	\$140,000	\$0	\$0	\$0	\$0	\$0	\$0
Saville Twp.	\$395,000	\$395,000	\$0	\$0	\$0	\$0	\$0	\$0
SW Madison Twp.	\$500,000	\$250,000	\$0	\$0	\$0	\$0	\$0	\$0
Spring Twp.	\$204,117	\$102,059	\$0	\$0	\$0	\$0	\$0	\$0
Toboyne Twp.	\$0	\$0	\$0	\$0	\$0	\$0	\$0	\$0
Tuscarora Twp.	\$777,810	\$388,905	\$0	\$0	\$0	\$0	\$0	\$0
Tyrone Twp.	\$465,000	\$232,500	\$0	\$0	\$0	\$0	\$0	\$0
Watts Twp.	\$240,000	\$120,000	\$0	\$0	\$0	\$0	\$0	\$0
Wheatfield Twp.	\$385,000	\$192,500	\$0	\$0	\$0	\$0	\$0	\$0
<b>TOTAL</b>	<b>\$10,198,715</b>	<b>\$213,215</b>	<b>\$1,574,940</b>	<b>\$174,993</b>	<b>\$150,000</b>	<b>\$50,000</b>	<b>\$0</b>	<b>\$0</b>

\* No response / Not available

**TABLE P-4  
NEW RESIDENTIAL UNIT CONSTRUCTION COSTS  
PERRY COUNTY 2023  
(Part 2 of 2)**

MUNICIPALITY	MOBILE HOMES		APT. CONVERSIONS		REHABBED HOUSING		CABINS*		TOTAL RESIDENTIAL CONSTRUCTION COSTS
	TOTAL COST	AVERAGE COST	TOTAL COST	AVERAGE COST	TOTAL COST	AVERAGE COST	TOTAL COST	AVERAGE COST	
Blain Boro.	\$0	\$0	\$0	\$0	\$0	\$0	\$0	\$0	\$0
Bloomfield Boro.	\$0	\$0	\$0	\$0	\$0	\$0	\$0	\$0	\$0
Buffalo Twp.	\$0	\$0	\$0	\$0	\$0	\$0	\$0	\$0	\$455,800
Carroll Twp.	\$0	\$0	\$0	\$0	\$0	\$0	\$0	\$0	\$1,210,329
Centre Twp.	\$0	\$0	\$0	\$0	\$0	\$0	\$0	\$0	\$410,000
Duncannon Boro.	\$0	\$0	\$0	\$0	\$0	\$0	\$0	\$0	\$0
Greenwood Twp.	\$0	\$0	\$0	\$0	\$0	\$0	\$0	\$0	\$275,000
Howe Twp.	\$0	\$0	\$0	\$0	\$0	\$0	\$0	\$0	\$0
Jackson Twp.	\$0	\$0	\$0	\$0	\$0	\$0	\$0	\$0	\$0
Juniata Twp.	\$0	\$0	\$0	\$0	\$0	\$0	\$0	\$0	\$250,000
Landisburg Boro.	\$0	\$0	\$0	\$0	\$0	\$0	\$0	\$0	\$0
Liverpool Boro.	\$0	\$0	\$0	\$0	\$0	\$0	\$0	\$0	\$0
Liverpool Twp	\$0	\$0	\$0	\$0	\$0	\$0	\$0	\$0	\$650,000
Marysville Boro.	\$0	\$0	\$0	\$0	\$0	\$0	\$0	\$0	\$3,154,484
Miller Twp	\$0	\$0	\$0	\$0	\$0	\$0	\$0	\$0	\$0
Millerstown Boro.	\$0	\$0	\$0	\$0	\$0	\$0	\$0	\$0	\$0
New Buffalo Boro.	\$0	\$0	\$0	\$0	\$0	\$0	\$0	\$0	\$0
Newport Boro.	\$0	\$0	\$0	\$0	\$0	\$0	\$0	\$0	\$270,000
NE Madison Twp	\$0	\$0	\$0	\$0	\$0	\$0	\$0	\$0	\$395,000
Oliver Twp.	\$0	\$0	\$0	\$0	\$0	\$0	\$0	\$0	\$0
Penn Twp.	\$0	\$0	\$0	\$0	\$0	\$0	\$0	\$0	\$1,746,115
Rye Twp.	\$0	\$0	\$0	\$0	\$0	\$0	\$0	\$0	\$140,000
Saville Twp.	\$0	\$0	\$0	\$0	\$0	\$0	\$0	\$0	\$395,000
SW Madison Twp.	\$0	\$0	\$0	\$0	\$0	\$0	\$0	\$0	\$500,000
Spring Twp.	\$0	\$0	\$0	\$0	\$0	\$0	\$0	\$0	\$204,117
Toboyne Twp.	\$0	\$0	\$0	\$0	\$0	\$0	\$0	\$0	\$0
Tuscarora Twp.	\$0	\$0	\$0	\$0	\$0	\$0	\$0	\$0	\$777,810
Tyrone Twp.	\$0	\$0	\$0	\$0	\$0	\$0	\$0	\$0	\$465,000
Watts Twp.	\$0	\$0	\$0	\$0	\$0	\$0	\$0	\$0	\$240,000
Wheatfield Twp.	\$0	\$0	\$0	\$0	\$0	\$0	\$0	\$0	\$385,000
<b>TOTAL</b>	<b>\$0</b>	<b>\$0</b>	<b>\$0</b>	<b>\$0</b>	<b>\$0</b>	<b>\$0.00</b>	<b>\$0</b>	<b>\$0</b>	<b>\$11,923,655</b>

\* Collected from UCC Recreational Cabin Affidavit information

**TABLE P-5  
COMMERCIAL, INDUSTRIAL & PUBLIC FACILITY CONSTRUCTION COSTS  
PERRY COUNTY 2023  
(Part 1 of 3)**

MUNICIPALITY	COMMERCIAL						
	NEW ESTABLISHMENTS			IMPROVEMENTS / EXPANSIONS			TOTAL
	NO.	TOTAL COST	AVERAGE COST	NO.	TOTAL COST	AVERAGE COST	
Blain Boro.	0	\$0	\$0	0	\$0	\$0	\$0
Bloomfield Boro.	1	*	\$0	0	\$0	\$0	\$0
Buffalo Twp.	0	\$0	\$0	0	\$0	\$0	\$0
Carroll Twp.	0	\$0	\$0	0	\$0	\$0	\$0
Centre Twp.	0	\$0	\$0	3	\$185,097	\$61,699	\$185,097
Duncannon Boro.	2	\$748,720	\$374,360	0	\$0	\$0	\$748,720
Greenwood Twp.	1	*	\$0	0	\$0	\$0	\$0
Howe Twp.	0	\$0	\$0	0	\$0	\$0	\$0
Jackson Twp.	0	\$0	\$0	0	\$0	\$0	\$0
Juniata Twp.	0	\$0	\$0	0	\$0	\$0	\$0
Landisburg Boro.	0	\$0	\$0	0	\$0	\$0	\$0
Liverpool Boro.	0	\$0	\$0	0	\$0	\$0	\$0
Liverpool Twp	2	\$0	\$0	0	\$0	\$0	\$0
Marysville Boro.	1	\$100,000	\$0	0	\$0	\$0	\$100,000
Miller Twp	0	\$0	\$0	0	\$0	\$0	\$0
Millerstown Boro.	0	\$0	\$0	2	\$22,970	\$11,485	\$22,970
New Buffalo Boro.	0	\$0	\$0	0	\$0	\$0	\$0
Newport Boro.	0	\$0	\$0	1	\$180,800	\$180,800	\$0
NE Madison Twp	0	\$0	\$0	0	\$0	\$0	\$0
Oliver Twp.	0	\$0	\$0	1	\$20,000	\$20,000	\$20,000
Penn Twp.	0	\$0	\$0	0	\$0	\$0	\$0
Rye Twp.	0	\$0	\$0	0	\$0	\$0	\$0
Saville Twp.	0	\$0	\$0	0	\$0	\$0	\$0
SW Madison Twp.	0	\$0	\$0	0	\$0	\$0	\$0
Spring Twp.	1	\$90,000	\$90,000	0	\$0	\$0	\$90,000
Toboyne Twp.	0	\$0	\$0	0	\$0	\$0	\$0
Tuscarora Twp.	0	\$0	\$0	0	\$0	\$0	\$0
Tyrone Twp.	0	\$0	\$0	0	\$0	\$0	\$0
Watts Twp.	0	\$0	\$0	0	\$0	\$0.00	\$0
Wheatfield Twp.	0	\$0	\$0	0	\$0	\$0	\$0
<b>TOTAL</b>	<b>8</b>	<b>\$938,720</b>	<b>\$58,045</b>	<b>7</b>	<b>\$408,867</b>	<b>\$39,140.55</b>	<b>\$1,166,787</b>

\* No response / Not available

**TABLE P-5  
COMMERCIAL, INDUSTRIAL & PUBLIC FACILITY CONSTRUCTION COSTS  
PERRY COUNTY 2023  
(Part 2 of 3)**

MUNICIPALITY	INDUSTRIAL						TOTAL
	NEW ESTABLISHMENTS			IMPROVEMENTS / EXPANSIONS			
	NO.	TOTAL COST	AVERAGE COST	NO.	TOTAL COST	AVERAGE COST	
Blain Boro.	0	\$0	\$0	0	\$0	\$0	\$0
Bloomfield Boro.	0	\$0	\$0	0	\$0	\$0	\$0
Buffalo Twp.	0	\$0	\$0	0	\$0	\$0	\$0
Carroll Twp.	0	\$0	\$0	0	\$0	\$0	\$0
Centre Twp.	0	\$0	\$0	0	\$0	\$0	\$0
Duncannon Boro.	0	\$0	\$0	0	\$0	\$0	\$0
Greenwood Twp.	0	\$0	\$0	0	\$0	\$0	\$0
Howe Twp.	0	\$0	\$0	0	\$0	\$0	\$0
Jackson Twp.	0	\$0	\$0	0	\$0	\$0	\$0
Juniata Twp.	0	\$0	\$0	0	\$0	\$0	\$0
Landisburg Boro.	0	\$0	\$0	0	\$0	\$0	\$0
Liverpool Boro.	0	\$0	\$0	0	\$0	\$0	\$0
Liverpool Twp	0	\$0	\$0	0	\$0	\$0	\$0
Marysville Boro.	0	\$0	\$0	0	\$0	\$0	\$0
Miller Twp	0	\$0	\$0	0	\$0	\$0	\$0
Millerstown Boro.	0	\$0	\$0	0	\$0	\$0	\$0
New Buffalo Boro.	0	\$0	\$0	0	\$0	\$0	\$0
Newport Boro.	0	\$0	\$0	0	\$0	\$0	\$0
NE Madison Twp	0	\$0	\$0	0	\$0	\$0	\$0
Oliver Twp.	0	\$0	\$0	0	\$0	\$0	\$0
Penn Twp.	0	\$0	\$0	0	\$0	\$0	\$0
Rye Twp.	0	\$0	\$0	0	\$0	\$0	\$0
Saville Twp.	0	\$0	\$0	0	\$0	\$0	\$0
SW Madison Twp.	0	\$0	\$0	0	\$0	\$0	\$0
Spring Twp.	0	\$0	\$0	0	\$0	\$0	\$0
Toboyne Twp.	0	\$0	\$0	0	\$0	\$0	\$0
Tuscarora Twp.	0	\$0	\$0	0	\$0	\$0	\$0
Tyrone Twp.	0	\$0	\$0	0	\$0	\$0	\$0
Watts Twp.	0	\$0	\$0	0	\$0	\$0	\$0
Wheatfield Twp.	0	\$0	\$0	0	\$0	\$0	\$0
<b>TOTAL</b>	<b>\$0</b>	<b>\$0</b>	<b>\$0</b>	<b>\$0</b>	<b>\$0</b>	<b>\$0</b>	<b>\$0</b>

**TABLE P-5  
COMMERCIAL, INDUSTRIAL & PUBLIC FACILITY CONSTRUCTION COSTS  
PERRY COUNTY 2023  
(Part 3 of 3)**

MUNICIPALITY	CHURCHES, SCHOOLS & PUBLIC FACILITIES						
	NEW ESTABLISHMENTS			IMPROVEMENTS / EXPANSIONS			TOTAL
	NO.	TOTAL COST	AVERAGE COST	NO.	TOTAL COST	AVERAGE COST	
Blain Boro.	0	\$0	\$0	0	\$0	\$0	\$0
Bloomfield Boro.	0	\$0	\$0	0	\$0	\$0	\$0
Buffalo Twp.	0	\$0	\$0	0	\$0	\$0	\$0
Carroll Twp.	0	\$0	\$0	0	\$0	\$0	\$0
Centre Twp.	0	\$0	\$0	0	\$0	\$0	\$0
Duncannon Boro.	0	\$0	\$0	0	\$0	\$0	\$0
Greenwood Twp.	0	\$0	\$0	0	\$0	\$0	\$0
Howe Twp.	1	\$260,000	\$260,000	0	\$0	\$0	\$260,000
Jackson Twp.	0	\$0	\$0	0	\$0	\$0	\$0
Juniata Twp.	0	\$0	\$0	0	\$0	\$0	\$0
Landisburg Boro.	0	\$0	\$0	0	\$0	\$0	\$0
Liverpool Boro.	0	\$0	\$0	0	\$0	\$0	\$0
Liverpool Twp	0	\$0	\$0	0	\$0	\$0	\$0
Marysville Boro.	0	\$0	\$0	0	\$0	\$0	\$0
Miller Twp	0	\$0	\$0	0	\$0	\$0	\$0
Millerstown Boro.	0	\$0	\$0	1	\$725,000	\$725,000	\$725,000
New Buffalo Boro.	0	\$0	\$0	0	\$0	\$0	\$0
Newport Boro.	0	\$0	\$0	0	\$0	\$0	\$0
NE Madison Twp	0	\$0	\$0	0	\$0	\$0	\$0
Oliver Twp.	0	\$0	\$0	0	\$0	\$0	\$0
Penn Twp.	0	\$0	\$0	1	\$213,000	\$213,000	\$213,000
Rye Twp.	0	\$0	\$0	0	\$0	\$0	\$0
Saville Twp.	0	\$0	\$0	0	\$0	\$0	\$0
SW Madison Twp.	0	\$0	\$0	0	\$0	\$0	\$0
Spring Twp.	0	\$0	\$0	0	\$0	\$0	\$0
Toboyne Twp.	0	\$0	\$0	0	\$0	\$0	\$0
Tuscarora Twp.	0	\$0	\$0	0	\$0	\$0	\$0
Tyrone Twp.	0	\$0	\$0	0	\$0	\$0	\$0
Watts Twp.	0	\$0	\$0	0	\$0	\$0	\$0
Wheatfield Twp.	0	\$0	\$0	0	\$0	\$0	\$0
<b>TOTAL</b>	<b>1</b>	<b>\$260,000</b>	<b>\$260,000</b>	<b>2</b>	<b>938,000.00</b>	<b>938,000.00</b>	<b>\$1,198,000</b>

**TABLE P-6  
NEW COMMERCIAL ESTABLISHMENTS  
(based on issued building permits)  
PERRY COUNTY  
2013-2023**

MUNICIPALITY	2013	2014	2015	2016	2017	2018	2019	2020	2021	2022	2023	TOTAL
Blain Boro.	0	0	0	0	0	0	0	0	0	0	0	0
Bloomfield Boro.	0	0	1	0	0	0	0	0	0	0	1	2
Buffalo Twp.	0	1	0	0	0	0	1	0	0	0	0	2
Carroll Twp.	0	0	0	1	0	0	1	0	1	0	0	3
Centre Twp.	0	0	0	2	0	0	1	0	0	1	0	4
Duncannon Boro.	0	0	2	0	0	0	0	0	0	0	2	4
Greenwood Twp.	0	2	1	0	0	0	0	0	1	0	1	5
Howe Twp.	0	1	0	0	0	0	0	0	0	0	0	1
Jackson Twp.	0	3	0	0	1	0	0	0	0	1	0	5
Juniata Twp.	0	0	0	0	0	0	0	0	0	0	0	0
Landisburg Boro.	0	0	0	0	0	0	0	0	0	0	0	0
Liverpool Boro.	0	1	0	0	0	0	0	0	0	0	0	1
Liverpool Twp	0	0	2	0	0	0	0	0	0	0	2	4
Marysville Boro.	0	0	1	0	0	0	1	1	0	0	1	4
Miller Twp	0	0	0	0	0	0	0	0	0	0	0	0
Millerstown Boro.	0	0	0	0	0	0	1	0	0	0	0	1
New Buffalo Boro.	0	0	0	0	0	0	0	0	0	0	0	0
Newport Boro.	0	0	0	0	0	0	0	0	1	0	0	1
NE Madison Twp	0	0	0	0	0	0	0	0	0	0	0	0
Oliver Twp.	0	1	0	0	0	0	0	0	1	0	0	2
Penn Twp.	0	1	0	0	1	1	0	0	0	1	0	4
Rye Twp.	0	1	0	0	0	0	0	0	0	0	0	1
Saville Twp.	0	0	0	0	0	0	0	0	1	0	0	1
SW Madison Twp.	0	3	0	0	0	0	0	0	0	0	0	3
Spring Twp.	0	2	1	0	0	1	1	0	0	1	1	7
Toboyne Twp.	0	2	0	0	0	0	0	0	0	0	0	2
Tuscarora Twp.	0	0	0	0	0	0	0	0	0	0	0	0
Tyrone Twp.	0	1	0	0	0	0	0	0	1	0	0	2
Watts Twp.	0	2	0	1	0	0	0	0	1	0	0	4
Wheatfield Twp.	0	1	0	0	0	0	0	0	0	0	0	1
<b>TOTAL</b>	<b>0</b>	<b>22</b>	<b>8</b>	<b>4</b>	<b>2</b>	<b>2</b>	<b>6</b>	<b>1</b>	<b>7</b>	<b>4</b>	<b>8</b>	<b>64</b>

**TABLE P-7  
NEW INDUSTRIAL ESTABLISHMENTS  
(based on issued building permits)  
PERRY COUNTY  
2013-2023**

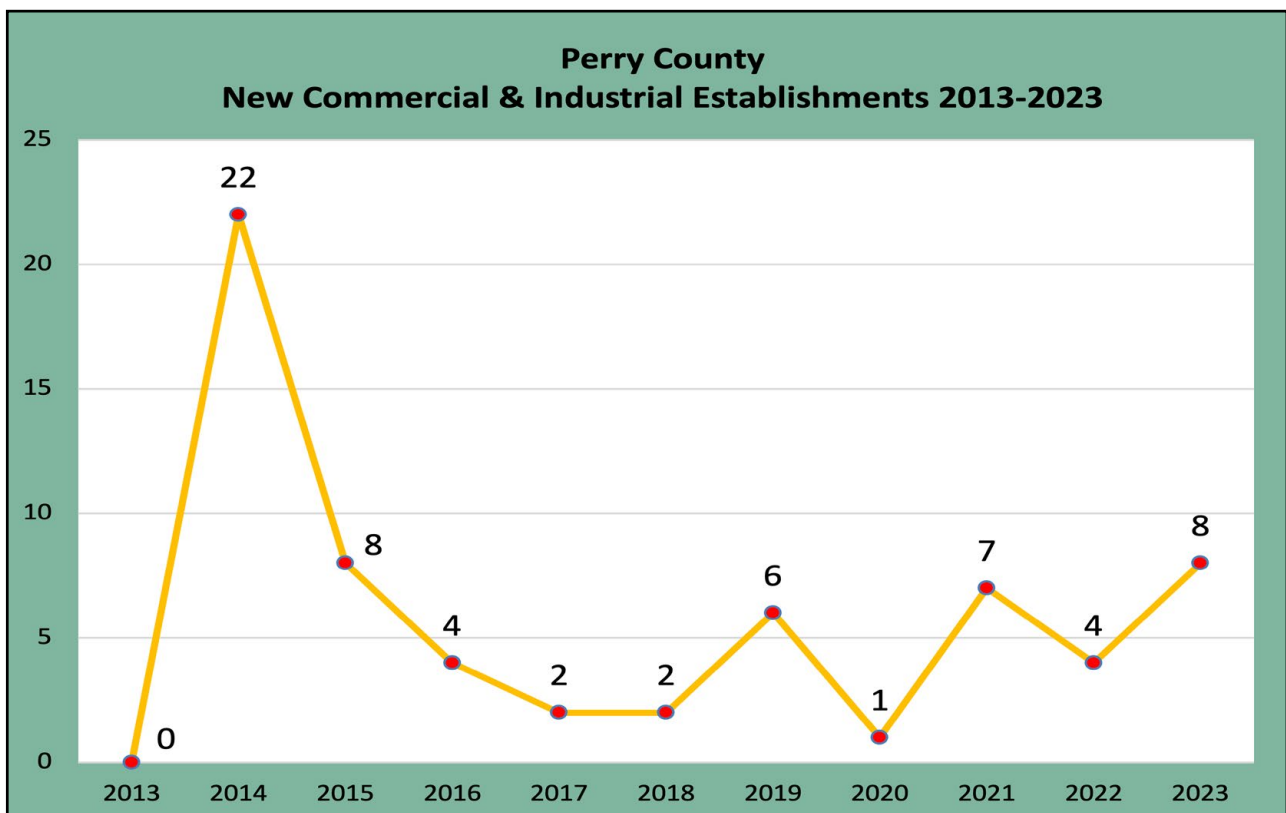
MUNICIPALITY	2013	2014	2015	2016	2017	2018	2019	2020	2021	2022	2023	TOTAL
Blain Boro.	0	0	0	0	0	0	0	0	0	0	0	0
Bloomfield Boro.	0	0	0	0	0	0	0	0	0	0	0	0
Buffalo Twp.	0	0	0	0	0	0	0	0	0	0	0	0
Carroll Twp.	0	0	0	0	0	0	0	0	0	0	0	0
Centre Twp.	0	0	0	0	0	0	0	0	0	0	0	0
Duncannon Boro.	0	0	0	0	0	0	0	0	0	0	0	0
Greenwood Twp.	0	0	0	0	0	0	0	0	0	0	0	0
Howe Twp.	0	0	0	0	0	0	0	0	0	0	0	0
Jackson Twp.	0	0	0	0	0	0	0	0	0	0	0	0
Juniata Twp.	0	0	0	0	0	0	0	0	0	0	0	0
Landisburg Boro.	0	0	0	0	0	0	0	0	0	0	0	0
Liverpool Boro.	0	0	0	0	0	0	0	0	0	0	0	0
Liverpool Twp.	0	0	0	0	0	0	0	0	0	0	0	0
Marysville Boro.	0	0	0	0	0	0	0	0	0	0	0	0
Miller Twp.	0	0	0	0	0	0	0	0	0	0	0	0
Millerstown Boro.	0	0	0	0	0	0	0	0	0	0	0	0
New Buffalo Boro.	0	0	0	0	0	0	0	0	0	0	0	0
Newport Boro.	0	0	0	0	0	0	0	0	0	0	0	0
NE Madison Twp.	0	0	0	0	0	0	0	0	0	0	0	0
Oliver Twp.	0	0	0	0	0	0	0	0	0	0	0	0
Penn Twp.	0	0	0	0	0	0	1	0	0	0	0	1
Rye Twp.	0	0	0	0	0	0	0	0	0	0	0	0
Saville Twp.	0	0	0	0	0	0	0	0	0	0	0	0
SW Madison Twp.	0	0	0	0	0	0	0	0	0	0	0	0
Spring Twp.	0	0	0	0	0	0	0	0	0	0	0	0
Toboyne Twp.	0	0	0	0	0	0	0	0	0	0	0	0
Tuscarora Twp.	0	0	0	0	0	0	0	0	0	0	0	0
Tyrone Twp.	0	0	0	0	0	0	0	0	0	0	0	0
Watts Twp.	0	0	0	0	0	0	0	0	0	0	0	0
Wheatfield Twp.	0	0	0	0	0	0	0	0	0	0	0	0
<b>TOTAL</b>	<b>0</b>	<b>0</b>	<b>0</b>	<b>0</b>	<b>0</b>	<b>0</b>	<b>1</b>	<b>0</b>	<b>0</b>	<b>0</b>	<b>0</b>	<b>1</b>



**TABLE P-8  
COMMERCIAL & INDUSTRIAL ESTIMATED CONSTRUCTION COSTS  
(based on issued building permits)  
PERRY COUNTY  
2013-2023**

YEAR	COMMERCIAL				INDUSTRIAL			
	NEW ESTABLISHMENTS		IMPROVEMENTS / EXPANSIONS		NEW ESTABLISHMENTS		IMPROVEMENTS / EXPANSIONS	
	NUMBER OF PERMITS	ESTIMATED CONSTRUCTION COSTS	NUMBER OF PERMITS	ESTIMATED CONSTRUCTION COSTS	NUMBER OF PERMITS	ESTIMATED CONSTRUCTION COSTS	NUMBER OF PERMITS	ESTIMATED CONSTRUCTION COSTS
2013	0	\$0	2	\$7,000	0	\$0	0	\$0
2014	22	\$531,921	16	\$137,144	0	\$0	0	\$0
2015	8	\$300,000	5	\$0	0	\$0	0	\$0
2016	4	\$300,000	1	\$0	0	\$0	0	\$0
2017	2	NP	17	NP	0	\$0	0	\$0
2018	2	\$391,000	2	\$50,000	0	\$0	0	\$0
2019	6	NP	4	\$60,000	1	NP	0	\$0
2020	1	NP	2	\$406,566	0	\$0	0	\$0
2021	7	\$1,326,500	6	\$1,848,119	0	\$0	0	\$0
2022	4	\$850,000	10	\$1,101,319	0	\$0	0	\$0
2023	8	\$938,720	7	\$408,866	0	\$0	0	\$0
<b>TOTAL</b>	<b>64</b>	<b>\$2,849,421</b>	<b>72</b>	<b>\$4,019,014</b>	<b>1</b>	<b>\$0</b>	<b>0</b>	<b>\$0</b>

\* No response / Not available



# 30-YEAR REGIONAL TREND

- COMMERCIAL
- INDUSTRIAL
- RESIDENTIAL



*Latsha Towers Public Housing,  
Swatara Twp., Dauphin County*

**TABLE D-P 1  
NEW COMMERCIAL ESTABLISHMENTS COMPARISON  
(based on issued building permits)  
DAUPHIN & PERRY COUNTIES  
1993-2023**

YEAR	DAUPHIN COUNTY	PERRY COUNTY	TOTAL
1993	81	7	88
1994	73	3	76
1995	64	12	76
1996	53	13	66
1997	83	3	86
1998	69	12	81
1999	84	13	97
2000	116	14	130
2001	72	4	76
2002	38	8	46
2003	81	3	84
2004	79	19	98
2005*	75	6	81
2006	81	4	85
2007	50	5	55
2008	41	6	95
2009	38	4	41
2010	19	1	20
2011	28	5	33
2012	40	0	60
2013	37	0	37
2014	44	22	66
2015	41	8	54
2016	54	4	48
2017	45	2	47
2018	53	2	55
2019	54	6	60
2020	38	1	39
2021	47	7	48
2022	32	4	36
2023	54	8	62
<b>TOTAL</b>	<b>1,820</b>	<b>206</b>	<b>2,026</b>

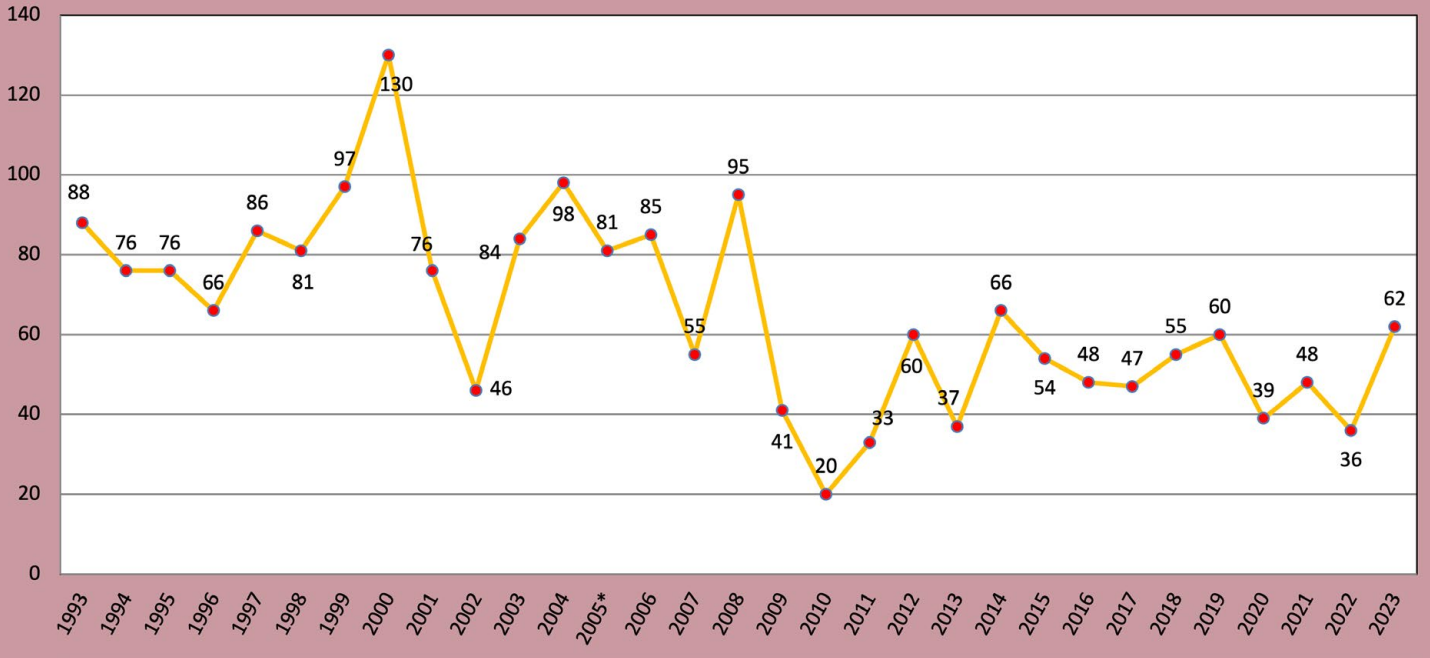
\* Swatara Twp. in Dauphin County included Industrial with Commercial

**TABLE D-P 2  
NEW INDUSTRIAL ESTABLISHMENTS COMPARISON  
(based on issued building permits)  
DAUPHIN & PERRY COUNTIES  
1993-2023**

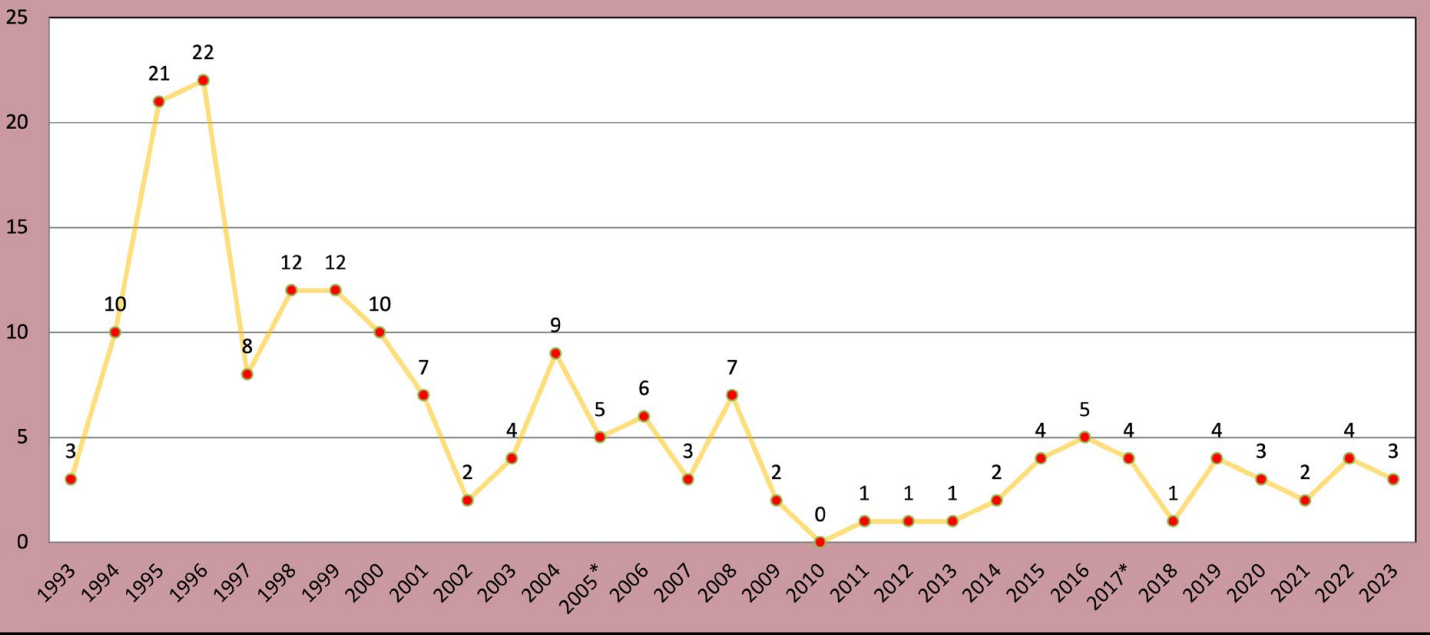
YEAR	DAUPHIN COUNTY	PERRY COUNTY	TOTAL
1993	3	0	3
1994	9	1	10
1995	16	5	21
1996	18	4	22
1997	6	2	8
1998	11	1	12
1999	8	4	12
2000	10	0	10
2001	6	1	7
2002	2	0	2
2003	4	0	4
2004	9	0	9
2005*	5	0	5
2006	5	1	6
2007	3	0	3
2008	7	0	7
2009	2	0	2
2010	0	0	0
2011	1	0	1
2012	1	0	1
2013	1	0	1
2014	2	0	2
2015	4	0	4
2016	5	0	5
2017*	4	0	4
2018	1	0	1
2019	3	1	4
2020	3	0	3
2021	2	0	2
2022	4	0	4
2023	3	0	3
<b>TOTAL</b>	<b>158</b>	<b>20</b>	<b>178</b>

\* Swatara Twp. in Dauphin County included Industrial with Commercial

### Total New Commercial Establishments 1993-2023



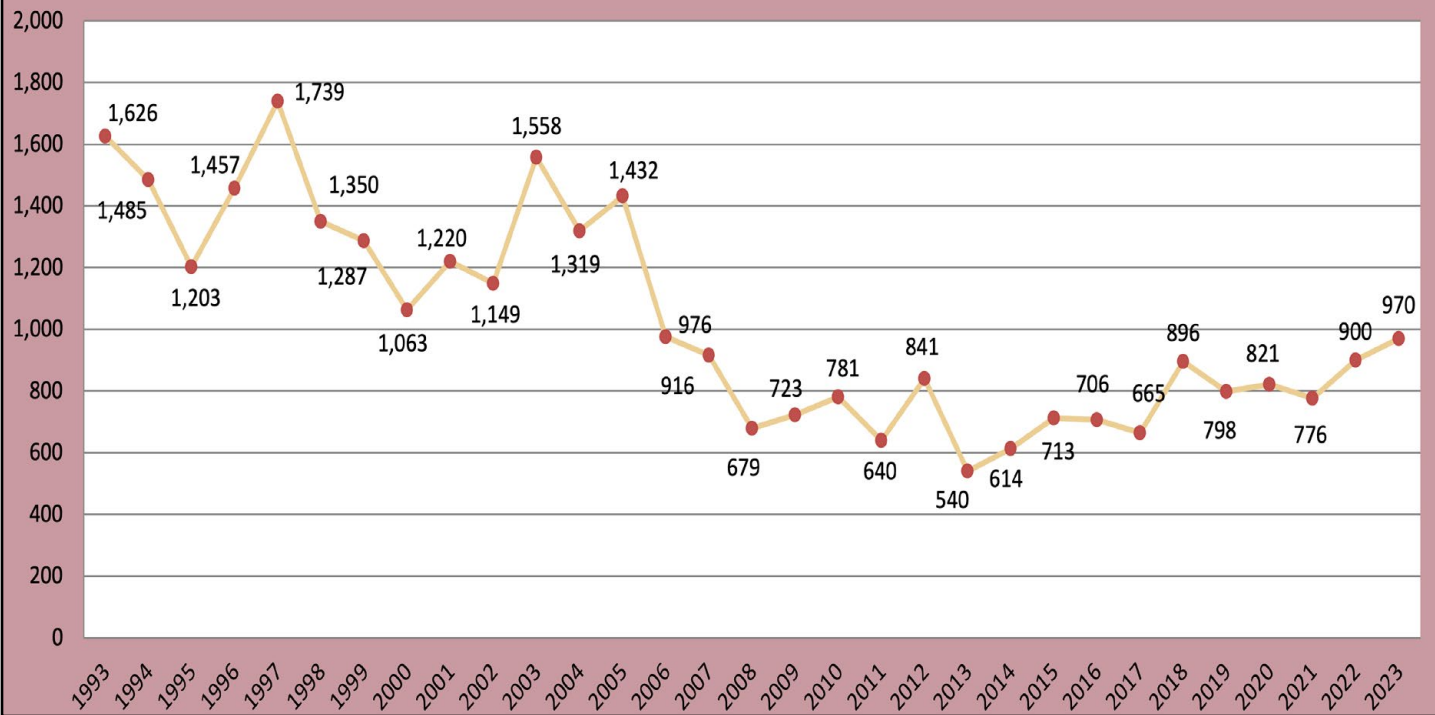
### Total New Industrial Establishments 1993-2023



**TABLE D-P 3  
NEW DWELLING UNITS  
COMPARISON  
(based on issued building permits)  
DAUPHIN & PERRY COUNTIES  
1993-2023**

YEAR	DAUPHIN COUNTY	PERRY COUNTY	TOTAL
1993	1,431	195	1,626
1994	1,174	311	1,485
1995	973	230	1,203
1996	1,212	245	1,457
1997	1,470	269	1,739
1998	1,068	282	1,350
1999	1,027	260	1,287
2000	814	249	1,063
2001	1,016	204	1,220
2002	892	257	1,149
2003	1,313	245	1,558
2004	1,028	291	1,319
2005	1,190	242	1,432
2006	850	126	976
2007	843	73	916
2008	592	87	679
2009	605	118	723
2010	680	101	781
2011	565	75	640
2012	812	29	841
2013	510	30	540
2014	518	96	614
2015	656	57	713
2016	626	80	706
2017	557	108	665
2018	804	92	896
2019	723	75	798
2020	716	105	821
2021	656	120	776
2022	783	117	900
2023	905	65	970
<b>TOTAL</b>	<b>27,009</b>	<b>4,834</b>	<b>31,843</b>

## Total New Dwelling Units 1993-2023



**Susquehanna Union Green,  
Susquehanna Twp., Dauphin County**

*Barn With Solar Panels,  
Lower Paxton Twp.,  
Dauphin County*



**2023 Building Activity Report**

