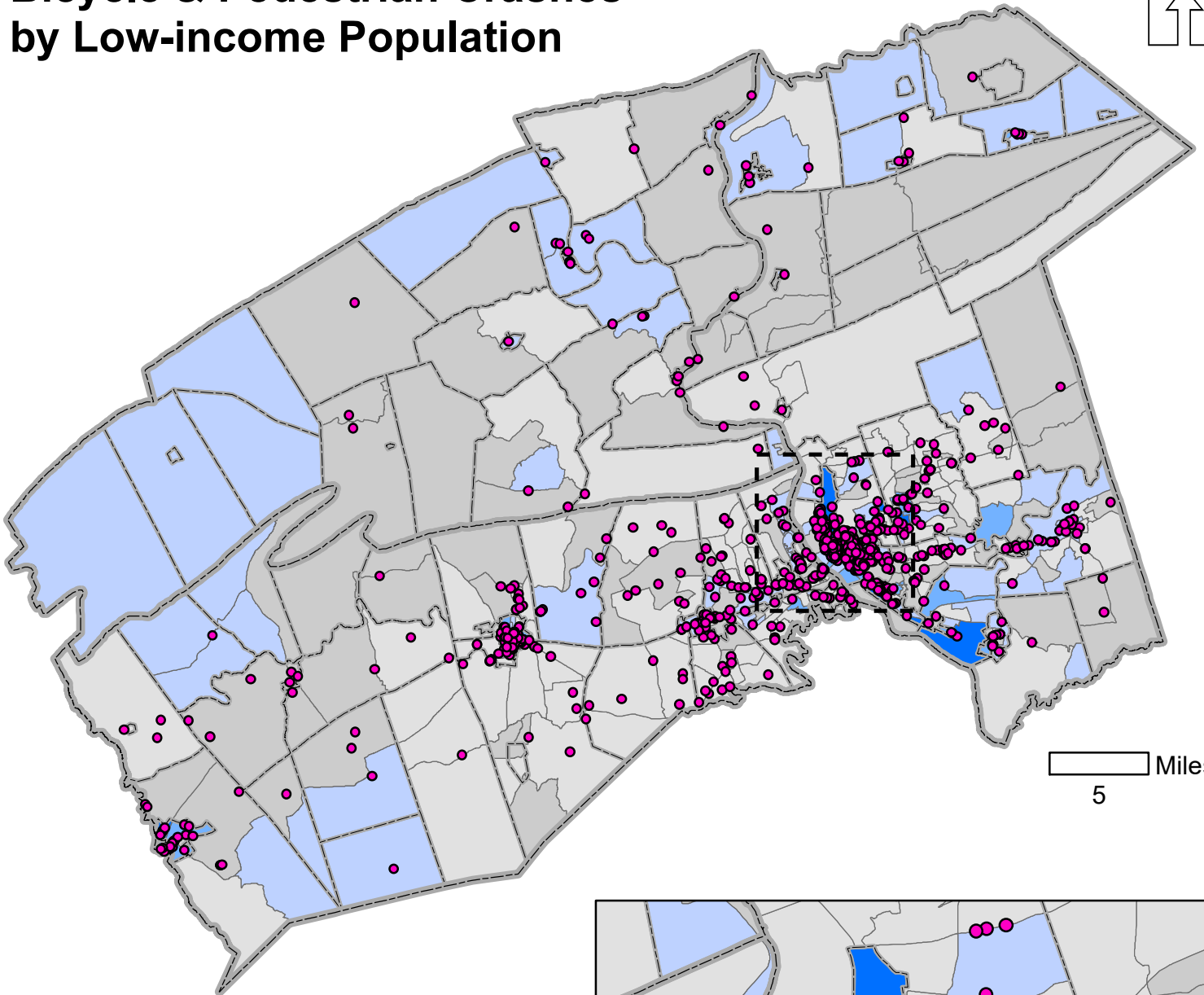
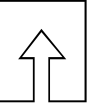


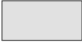


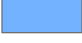


Map 10

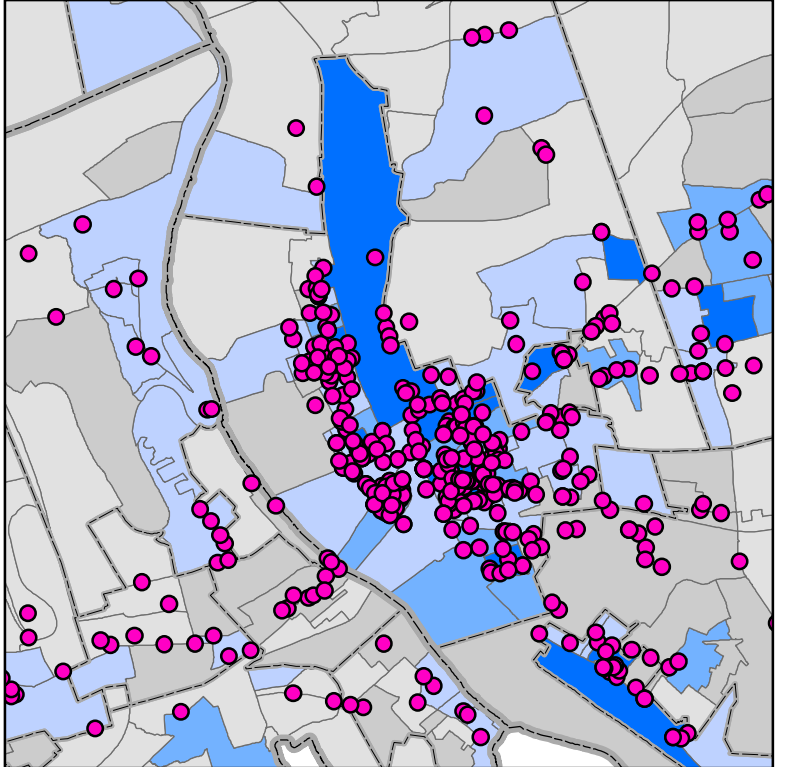
Bicycle & Pedestrian Crashes by Low-income Population



5 Miles

Low-income Population Percentage by Block Group

-  Less than 4.89%
-  4.89% - 9.77%
-  9.78% - 21.59%
-  21.60% - 37.45%
-  Greater than 37.45%
-  Bicycle & Pedestrian Crashes



Source: 2015-2019 American Community Survey 5-Year Estimates