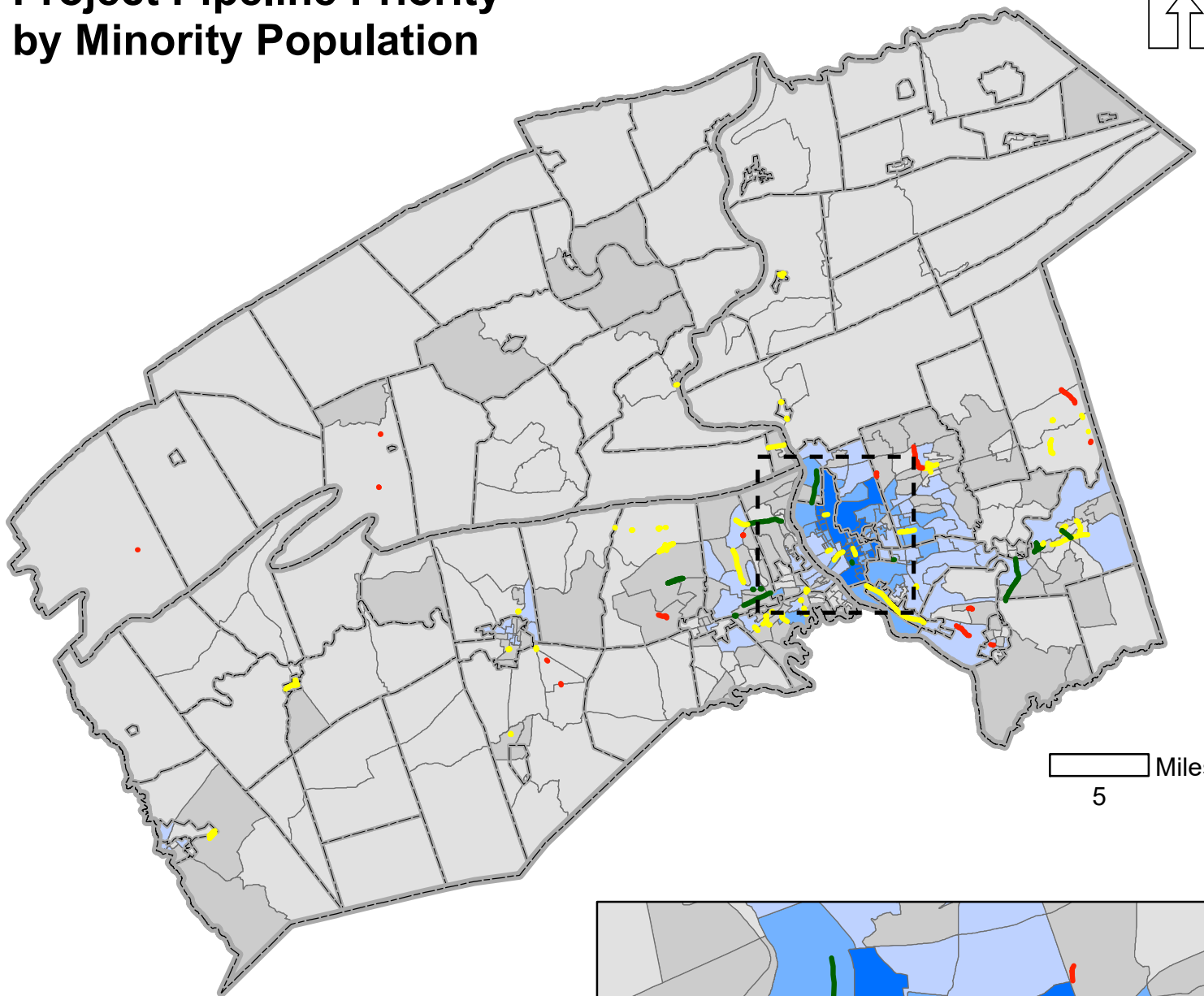


Map 17 Project Pipeline Priority by Minority Population

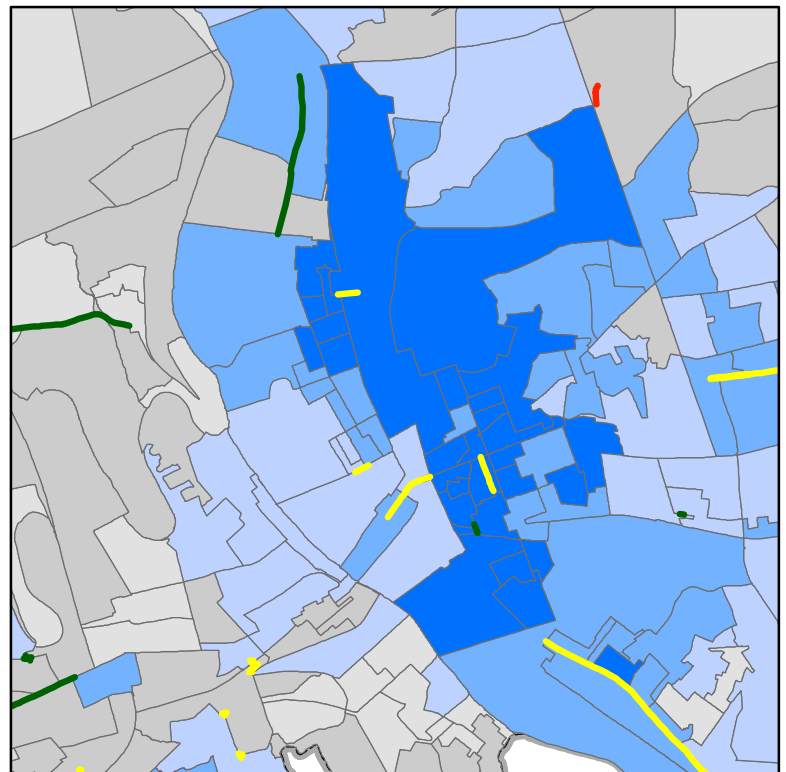


Minority Population Percentage by Block Group

- Less than 9.49%
- 9.49% - 23.15%
- 23.16% - 44.57%
- 44.58% - 70.93%
- Greater than 70.94%

Project Pipeline Priority

- High
- Medium
- Low



Source: 2015-2019 American Community Survey 5-Year Estimates