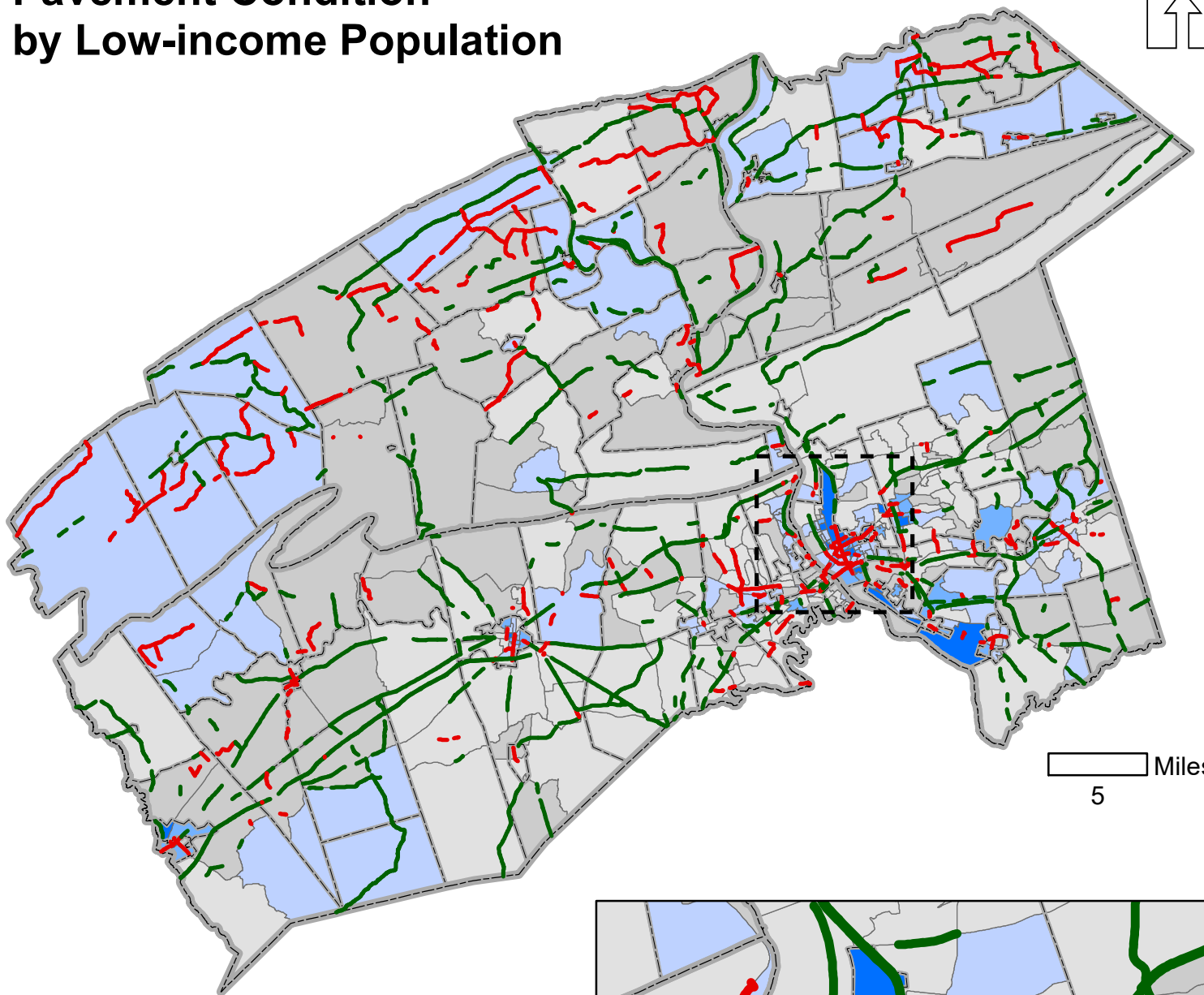
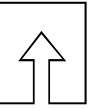


Map 8 Pavement Condition by Low-income Population



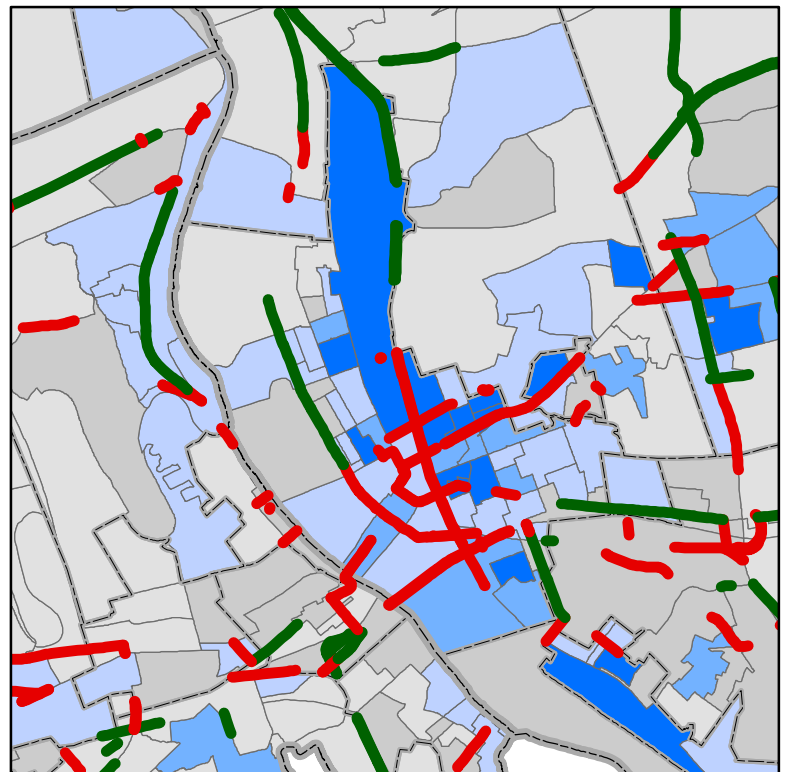
5 Miles

Low-income Population Percentage by Block Group

- Less than 4.89%
- 4.89% - 9.77%
- 9.78% - 21.59%
- 21.60% - 37.45%
- Greater than 37.45%

Road Condition

- EXCELLENT
- POOR



Source: 2015-2019 American Community Survey 5-Year Estimates