

## New Challenges As We Continue Working Together

*From Executive Director Andrew Bomberger, AICP*

As the new Executive Director of Tri-County, I wanted to take a moment to share some thoughts as I undertake this new challenge.

First, I would like to thank my predecessor, Steve Deck, who has enabled a smooth transition and set our entire organization up for success.

I'd also like to thank the TCRPC staff and our many regional partners who help us face the challenges of today and plan for a better tomorrow.

Having spent the past decade at TCRPC, serving in a variety of roles, I've come to understand that relationships are paramount to this work.

I've had the opportunity to establish many valuable and productive partnerships across the region, with county and municipal officials from my time as a regional planner; with local advocates as the bike/ped planning coordinator; and with state agency personnel while developing the Transportation Improvement Program and Regional Transportation Plan as the transportation planning coordinator.

Accomplishing our goals will take the collective effort of many groups, organizations and individuals.

I look forward to building on my existing relationships and establishing new partnerships as we continue working together to improve our transportation system, strengthen our local communities, and enhance the region's environment.



*Former TCRPC Executive Director Steve Deck, left, who retired at the end of August, and new Executive Director Andrew Bomberger, right.*



### Please Welcome Our Fall Intern!

**Rebecca Wenschhof** is a grad student at Shippensburg University going for an M.S. in Geoenvironmental Science and Sustainability. She also holds a B.S. in Geoenvironmental Studies.

As a Traffic Counting and GIS Intern at TCRPC this fall, she's helping with traffic cameras, vehicle and bike/ped counts, and GIS maps for the Regional Transportation Plan.

Welcome, Rebecca!

### IN THIS ISSUE...

- 2 - Shaping Tomorrow's Commute: Public Outreach for the Regional Transportation Plan
- 4 - New Safety Action Plan & Sober Ride Home Program Part of SS4A
- 6 - WREP Continues to Make Progress in Dauphin County
- 6 - SusqueCycle Sees 50% Surge in Ridership in 2024
- 8 - Perry County Planning Update
- 10 - Free Events This Fall from Manada Conservancy
- 10 - The TCRPC Planning Toolkit: A Valuable Resource
- 12 - HATS Crash App Updated to Include PennDOT's 2019-2023 Data

# Shaping Tomorrow's Commute: Public Outreach for the Regional Transportation Plan

By Karen Dixon, Transportation & Community Planner

The Harrisburg Area Transportation Study (HATS) is the team behind transportation planning for Cumberland, Dauphin and Perry counties.

As the region's Metropolitan Planning Organization, HATS partners with federal, state, and local officials -- including the City of Harrisburg and SRTA -- to tackle the transportation needs of nearly 1,700 square miles.

At the heart of this effort is the Regional Transportation Plan (RTP), which guides transportation projects and spending for the next 20 years. It's all about identifying long-term needs and setting priorities to improve the region's roads, transit and infrastructure.

We want your voice to be heard! Community input is key to making decisions that reflect local concerns. That's why HATS has hosted seven public outreach events across the region, with two more planned for October.

Don't miss the chance to fill out our public survey to share your ideas and priorities for the future of transportation in our area. Your feedback matters!

Please feel free to bring a specific transportation need to our attention by completing a transportation need form [here](#).

[Click here](#) for more details and to make your voice count in shaping our region's transportation system.



**C.S. DAVIDSON, INC.**  
ENGINEERING A BETTER COMMUNITY

- Stormwater
- Water & Wastewater
- Parks & Recreation
- Inspection
- Municipal Software

York • Gettysburg • Lancaster  
CSDavidson.com • 717-846-4805



**Committed to excellence in everything we do.**

- Municipal Engineering
- Community Planning
- Ordinance Writing
- Stormwater Management/MS4 Compliance
- Traffic/Bridge Engineering
- Subsurface Utility Engineering

5031 Richard Lane, Suite 111  
Mechanicsburg, PA 17055

1-800-738-8395

rettew.com |   



**We Are Proud to Support the Tri-County Regional Planning Commission**



**DAUPHIN COUNTY COMMISSIONERS**  
Justin Douglas • George P. Hartwick, III • Mike Pries

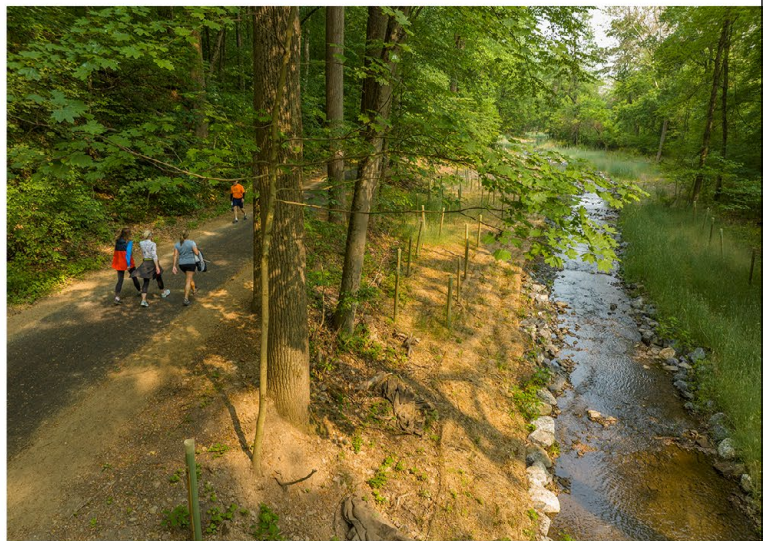
[www.DauphinCounty.org](http://www.DauphinCounty.org)



Working, living, and volunteering in the  
great communities we serve.

ENGINEERING | PLANNING | INFRASTRUCTURE SOLUTIONS

[WWW.HRG-INC.COM](http://WWW.HRG-INC.COM)



# New Safety Action Plan & Sober Ride Home Program Part of SS4A

By Ben Warner, Regional Planner

## Safe Streets & Roads for All Safety Action Plan Completed

Over the past year, the Harrisburg Area Transportation Study (HATS) has been working with engineering firm Kittelson & Associates to develop a regional Safe Streets for All (SS4A) Comprehensive Safety Action Plan.

Between 2018-2022, there were 274 deaths and 1,177 serious injuries on the region's roads. With input from state, county and local officials, the Safety Action Plan will help to eliminate fatal and serious injury crashes across the region by 2045.

Part of the plan identifies the region's High Injury Network (HIN), which shows where the highest number of severe crashes occur. For the HATS region, the highest number of crashes involve Lane Departure (vehicle leaving its lane), Impaired Driving, and Pedestrian and Bicycle Crashes.

Under the plan, local municipalities with identified projects will be eligible for SS4A funding.

Finally, based on areas identified in PennDOT's Highway Safety Networking Screening list, conceptual engineering concepts were identified for five locations, including two each in Cumberland and Dauphin counties, and one in Perry County.

To view a storymap of the SS4A Safety Action Plan, [click here](#).



## Sober Ride Home Program

Also as part of the Safety Action Plan, TCRPC was awarded an SS4A Planning and Demonstration Grant to develop the Sober Ride Home Program.

In the TCRPC region, roughly 40 percent of roadway fatalities are caused by DUIs. To help eliminate DUIs across the region, the program will partner with Uber to offer rides to individuals who have consumed too much alcohol at local restaurants or bars.

Keep an eye on the TCRPC website for information on Sober Ride Home's official launch.

**FOX**  
P E S T C O N T R O L  
PROMPT SERVICE IN HARRISBURG --  
GUARANTEED!  
(717) 366-9627 • WWW.FOXPEST-HARRISBURG.COM

**CLICK HERE TO EXPLORE  
TCRPC'S YOUTUBE CHANNEL!**

For all the latest & archived meeting videos

Follow Our Social Media for  
News & Updates About  
Future Events & Classes

Facebook, Twitter, and LinkedIn icons.

# Every Detail Matters



Creekview Road Interchange  
Cumberland County



Larson Design Group is an award-winning, employee-owned Architecture, Engineering, Planning, and Consulting firm that is excited to partner with the Tri-County Regional Planning Commission.

Our dedicated transportation experts have hundreds of years of combined experience delivering expertise, quality, and innovation to support all sizes of transportation projects including:

Traffic Planning & Engineering | Highway Engineering  
Bridge Engineering | Bridge Safety Inspection  
Construction Inspection Services

[larsondesigngroup.com/services/transportation](https://larsondesigngroup.com/services/transportation)

# WREP Continues To Make Progress In Dauphin County

By Alexa Korber, AICP, Planner

The Dauphin County Water Resources Enhancement Program (WREP) continues to host monthly meetings for its advisory committee.

At the September 25 meeting, contracted engineering firm Herbert, Rowland and Grubic (HRG) presented the results of their priority project site visits.

Ten potential project locations were selected from a list of priority areas compiled by the participating municipalities. All potential projects are located within the Swatara Creek watershed and are within East Hanover, Londonderry, Lower Swatara, South Hanover and West Hanover townships, and Middletown and Royalton boroughs.

The potential projects are a mix between stream restorations, channel stabilization and various flood control measures. Next steps include performing in-depth site suitability modeling to select the most cost-efficient project. The results of this modeling will be presented to the advisory committee in October.

WREP staff continues to create outreach material for members. A new website specifically for the WREP group will be launched this fall. Staff will also reach out to other municipalities about the program and the benefits to be gained from joining.

For more information, email [Jerry Duke](mailto:Jerry.Duke@dauphincounty.org) or call (717) 234-2639.



# SusqueCycle Sees 50% Surge in Ridership in 2024

By Karen Dixon, Transportation & Community Planner

SusqueCycle, Harrisburg's bike share program, has experienced a remarkable year, with ridership up over 50 percent so far in 2024.

This surge in ridership highlights the growing popularity of cycling as a convenient, affordable and eco-friendly transportation option in the city.

Several key factors contributed to the program's success. SusqueCycle upgraded its bike infrastructure, adding a new fleet of modern bikes and two additional docking stations. These improvements, combined with the program's low-cost rental options, have made it easier for residents and visitors to embrace biking for commuting, leisure and quick trips around the city.

The launch of a new fleet of bikes has also played a significant role in attracting new users. The new modern bike fleet offers enhanced convenience with GPS technology and a smoother ride.

With the program continuing to grow, SusqueCycle is showing that bike sharing can be a sustainable and successful part of urban transportation, promoting healthier lifestyles and reducing carbon emissions.

As ridership continues to climb, SusqueCycle looks forward to further expansion opportunities for the bike share network and enhancing its services to meet increasing demand.

Please visit [www.susquecycle.org](http://www.susquecycle.org) for more information.

SMITH LAND  
 & IMPROVEMENT CORPORATION  
 COMMITMENT TO COMMUNITY.  
 OPPORTUNITIES FOR ENTERPRISE.™  
 SMITHLANDUSA.COM

WSP  
 Question today  
 Imagine tomorrow  
 Create for the future  
 www.wsp.com

# YOUR PARTNER. CREATING THE FUTURE.

Planning Smart,  
Healthy, Resilient,  
and Sustainable  
Spaces for  
Everyone.

LEHIGH VALLEY SR 100 ROADWAY RECONSTRUCTION | UPPER MACUNGIE TOWNSHIP, PA.



[gannettfleming.com](http://gannettfleming.com)



# Perry County Planning Update

By Jason Finnerty, *Perry County Planning Coordinator*

## **PICTURE PERRY Snapshot**

In a milestone for the PICTURE PERRY Comprehensive Plan, all 22 municipalities that adopted the plan have now accepted its first-year amendments, reaffirming their commitment to this unified approach to community planning.

Also, with the final round of implementation workgroup sessions concluded for 2024, summary reports will be posted to the [web hub](#).

Some highlights from the sessions included:

- The Friends of the Lynn Sheaffer Dum Memorial Park are considering moving forward with phase two of the three-phase project and will be looking into funding;
- There is movement with the Perry County Economic Development Authority's wayfinding sign project. Municipalities will be asked to assist in getting the signs placed to help visitors find the county's key destinations;
- There was mention of how successful the Perry County Downtown/Main Street facade program has been and the level of interest in wanting to see the program continue;
- The lack of a tourism promotion agency was mentioned as a concern;
- There was more discussion on the need for the county to collect a hotel tax from visitors;
- The Perry County Economic Development Authority will select a consultant to prepare a feasibility study for a sports/events complex;
- DCNR expressed interest in discussing trail studies for the Sherman's Creek Water Trail, the potential trail connections between Newport Borough to Little Buffalo and Bloomfield Borough;
- There was more discussion on local bridge and road project prioritization;
- Possible transportation projects were discussed, including the SR 274 and SR 74 intersection near the West Perry High School, the Meck's Corner intersection, and Sugar Run Road's limitations as a single-lane road;
- Housing opportunities in the Marysville Borough and Watts Township areas were discussed.
- There was also discussion about the differences between tiny homes and modular manufactured homes.

Here is the schedule for the next round of workgroup sessions:

- Economic Development: 10 AM, Tue., Jan. 7 at Perry County Business & Tourism Center, 9 W. Main St., New Bloomfield;
- Community Facilities and Utilities: 10 AM, Thu., Jan. 9 at the Perry County office, 25 W. Main St., New Bloomfield;
- Natural Resources and Recreation: 1 PM, Thu., Jan. 9 at the county office;
- Housing: 10 AM, Thu., Jan. 23 at the county office;
- Transportation: 1 PM, Thu., Jan. 23 at the county office.

Please plan to join us!

## **Latest News on the Hazard Mitigation Plan's 5-Year Update**

County, municipal and Emergency Management officials, along with Planning Commission staff and the MCM Consulting Group, continue to update the Perry County Hazard Mitigation Plan (HMP).

MCM has recently worked on the county's hazard analysis and risk assessment, capability assessment, and plan integration. The consultant also conducted one additional planning team meeting and gave presentations during the EMA and General Workshop Sessions of the 111th Annual Convention of the Perry County Association of Township Officials.

The county's municipalities were tasked with completing county and municipal capability assessments, hazard identification worksheets, and updates to the current hazard profiles.

Here is the remaining schedule for the plan's development:

- Local Planning Team (MS Teams) to Finalize Mitigation Strategy, Thu., Oct. 17, 1 PM, Perry County office, 25 W. Main St., New Bloomfield;
- Public Meeting Risk Assessment: Thu., Oct. 17, 6 PM, Perry County Courthouse, 1 E. Main St., New Bloomfield;
- Local Planning Team (MS Teams) for Draft Plan Review: Tue., Feb. 4, 10 AM, county office;
- Public Meeting for Draft Plan Presentation: Tue., Feb. 18, 6 PM, county office.

To participate in virtual meetings via MS Teams, email [Adam Leister](#), the project lead for the MCM Group.

Following the public meeting for the draft plan presentation, there will be a public comment period from mid-February to mid-March. The finalized draft plan will then be sent to Pennsylvania Emergency Management Agency and subsequently to the Federal Emergency Management Agency for the necessary state and federal approvals.

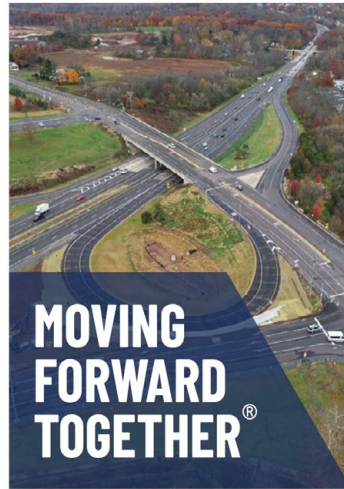




# Transforming how communities move.



kittelson.com



## MOVING FORWARD TOGETHER<sup>®</sup>

An ENR 500 Top Design Firm serving the eastern United States since 1989

### OFFERING THE FOLLOWING SERVICES

- |                            |                         |                   |
|----------------------------|-------------------------|-------------------|
| Highway Design             | Transportation Planning | Multimodal Design |
| Bridge Design & Inspection | Municipal Design        | Environmental     |
| Traffic Signals & ITS      | CM/CI                   | Expert Witness    |



## SERVING TRI-COUNTY & SURROUNDING COMMUNITIES

**Troy Truax, AICP** | Director of Planning  
Troy.Truax@mbakerintl.com | (717) 213-6241

**Brian Funkhouser, AICP** | Senior Planner  
Brian.Funkhouser@mbakerintl.com | (717) 213-6236

[www.MBAKERINTL.com](http://www.MBAKERINTL.com)

## Michael Baker

### INTERNATIONAL

- Air Quality Monitoring
- Architecture
- Aviation
- Broadband
- Emergency Management
- Environmental
- Geospatial Technologies
- Municipal & Civil Engineering
- Planning & Urban Design
- Public Engagement
- Public Funding
- Rail & Transit
- Stormwater Management
- Telecom & Utilities
- Traffic Engineering & Design
- Transportation Planning & Engineering

# Free Events This Fall from Manada Conservancy

Looking for fun and free nature-based education opportunities? Manada Conservancy has free events to get you outdoors this fall:

- **Using Technology in Nature (webinar):** Thu., Oct 17, 7-8 PM. Use your tech to connect with nature! In this webinar, Manada Conservancy Stewardship Director Shawn Jacobs will discuss and demonstrate how to use digital tools such as iNaturalist to engage with the natural world outdoors. [Register here.](#)
- **Boathouse Park Buffer Workday:** Thu., Oct. 24, 9 AM-12 PM. Boathouse Park, Boat House Rd, Hershey. Join our friends from the Hershey Company's Green Team for a morning of buffer maintenance and tree planting at Boathouse Park. We hope to plant 75-100 trees and shrubs! Details and registration [here.](#)
- **Applying Tools of Chestnut Restoration to Other Threatened Species:** Thu., Nov. 14, 7-8 PM. East Hanover Township Municipal Building, 8848 Jonestown Road, Grantville. Non-native pests and pathogens threaten numerous tree species. We've tried maintaining healthy forest ecosystems by doing things the traditional way. But with climate change, what different methods will we need to consider? Lake Graboski of The American Chestnut Foundation will explain their model for forest restoration in this free program. Register by emailing [office@manada.org](mailto:office@manada.org) or calling (717) 566-4122.



All registration and program details are available at [manada.org](http://manada.org).

## THE TCRPC PLANNING TOOLKIT

*A Valuable Resource for Municipalities  
Around the Region & State*

**PLANNING TOOLKIT**

TCRPC launched this online planning toolkit in 2022 as a service to Central Pennsylvania's municipalities, as well as citizens and local governments around the commonwealth.

ENVIRONMENTAL FACT SHEETS	TRANSPORTATION FACT SHEETS	ZONING FACT SHEETS
<ul style="list-style-type: none"><li>• Agricultural &amp; Natural Resource Protection</li><li>• Brownfield Redevelopment</li><li>• Community Gardens</li><li>• Conservation Easements</li><li>• Green Building Standards</li><li>• Historic Resource Protection</li><li>• Solar Facilities</li><li>• Stormwater Management</li></ul>	<ul style="list-style-type: none"><li>• Access Management</li><li>• Complete Streets</li><li>• Connectivity</li><li>• Electric Vehicles &amp; Charging Stations</li><li>• E-Scooters &amp; E-Bikes</li><li>• Impact Fees</li><li>• Off-Street Parking Management</li><li>• Signal Management</li></ul>	<ul style="list-style-type: none"><li>• Accessory Dwelling Units</li><li>• Affordable &amp; Attainable Housing</li><li>• Agricultural &amp; Natural Resource Protection</li><li>• Commercial &amp; Office Redevelopment</li><li>• Farm Animals &amp; Non-Traditional Pets</li><li>• Forestry</li><li>• Form Based Codes</li></ul>

TCRPC's online [Planning Toolkit](#) provides local governments and the public about a wide variety of techniques and policies that promote up-to-date Smart Growth principles.

The site features fact sheets and model ordinances on numerous topics that you can download to help your community address planning-level issues in consistent and effective ways.

**VISIT THE TOOLKIT SOON!**



**Gibson-Thomas**  
ENGINEERING

[www.gibson-thomas.com](http://www.gibson-thomas.com)

**Highway/Traffic Engineering**

**Structural Engineering/NBIS**

**Water/Wastewater Management**

**Survey/Land Development**

**Geospatial/Environmental and  
Drone Services**

**Construction Management and  
Inspection**

**Committed to QUALITY and Client SATISFACTION since 1916**

**3552 Gettysburg Road | Suite 201 | Camp Hill, PA 17011  
717-612-9880**

## REQUEST A PLANNING CONSISTENCY LETTER

Many grant/funding programs require applicants to submit a letter from their local, county or regional planning agency to confirm that a project is consistent with local plans. [Click here](#) to request a planning consistency letter, or call the TCRPC office at 717-234-2639 for more information. You may also email us at [planning@tcrpc-pa.org](mailto:planning@tcrpc-pa.org).



### TCRPC Staff

**Andrew Bomberger, AICP**  
Executive Director  
[abomberger@tcrpc-pa.org](mailto:abomberger@tcrpc-pa.org)

**Diane Myers-Krug, AICP**  
Associate Director  
[dkrug@tcrpc-pa.org](mailto:dkrug@tcrpc-pa.org)

**Ana Avila-Tinoco**  
Administrative Assistant  
[aavila-tinoco@tcrpc-pa.org](mailto:aavila-tinoco@tcrpc-pa.org)

**Denise Dillman**  
HR/Finance Assistant  
[ddillman@tcrpc-pa.org](mailto:ddillman@tcrpc-pa.org)

**Karen Dixon**  
Transportation & Community Planner  
[kdixon@tcrpc-pa.org](mailto:kdixon@tcrpc-pa.org)

**Jerry Duke, AICP**  
Dauphin Co. Planning Coordinator  
[jduke@tcrpc-pa.org](mailto:jduke@tcrpc-pa.org)

**Jason Finnerty**  
Perry Co. Planning Coordinator  
[jfinnerty@tcrpc-pa.org](mailto:jfinnerty@tcrpc-pa.org)

**Timothy Jones**  
HPMS Coordinator/  
GIS Technician  
[tjones@tcrpc-pa.org](mailto:tjones@tcrpc-pa.org)

**Alexa Korber, AICP**  
Planner  
[akorber@tcrpc-pa.org](mailto:akorber@tcrpc-pa.org)

**Larry Portzline, APR**  
Communications Coordinator  
[lportzline@tcrpc-pa.org](mailto:lportzline@tcrpc-pa.org)

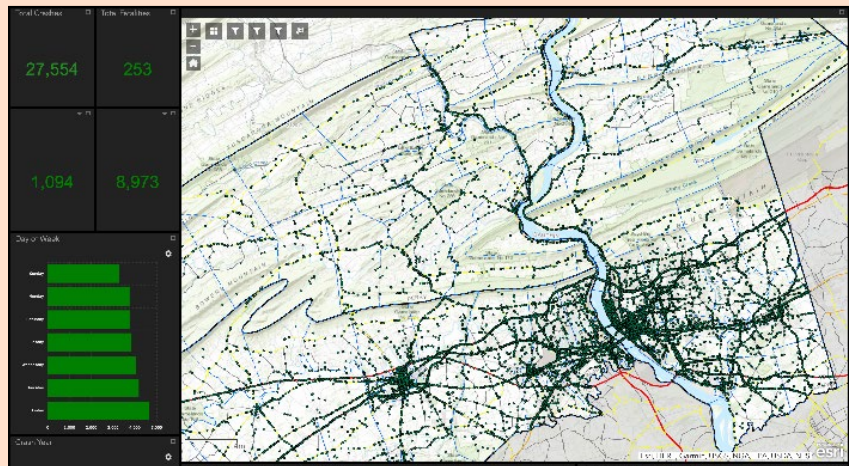
**Tanner Stroup**  
Transportation & Community Planner  
[tstroup@tcrpc-pa.org](mailto:tstroup@tcrpc-pa.org)

**Benjamin Warner**  
Planner  
[bwagner@tcrpc-pa.org](mailto:bwagner@tcrpc-pa.org)

## HATS Crash App Updated to Include PennDOT's 2019-2023 Data

With PennDOT's recent release of its 2023 crash data, HATS staff will soon update the [Regional Safety App](#) to include 2019-2023 crash information -- the most up-to-date crash data over the past five years.

For questions about the app or its data, email [Ben Warner](mailto:Ben Warner) or call (717) 234-2639.



## Tri-County Regional Planning Commission

320 Market Street, Suite 301E, Harrisburg, PA 17101-2225  
(717) 234-2639 / [www.tcrpc-pa.org](http://www.tcrpc-pa.org)

### PUBLIC INFORMATION & PARTICIPATION

This newsletter is a primary means, other than such items as may be published on the TCRPC website or broadcast by the general media, by which information concerning the Regional and Transportation Planning programs is made available to the citizens and public of the Tri-County Region. It is distributed four times a year and has a circulation of over 2,000. The meetings of the Regional Planning Commission and the Harrisburg Area Transportation Study are open to the public. Persons who wish to receive issues of this newsletter, obtain other information or comment about the planning programs should email [planning@tcrpc-pa.org](mailto:planning@tcrpc-pa.org).



Strawberry Square,  
New Home of TCRPC

*The preparation and distribution of the TCRPC Newsletter is financed in part by grants from the U.S. Department of Transportation, the Pennsylvania Department of Transportation, and Dauphin and Perry counties.*