

Transportation Need

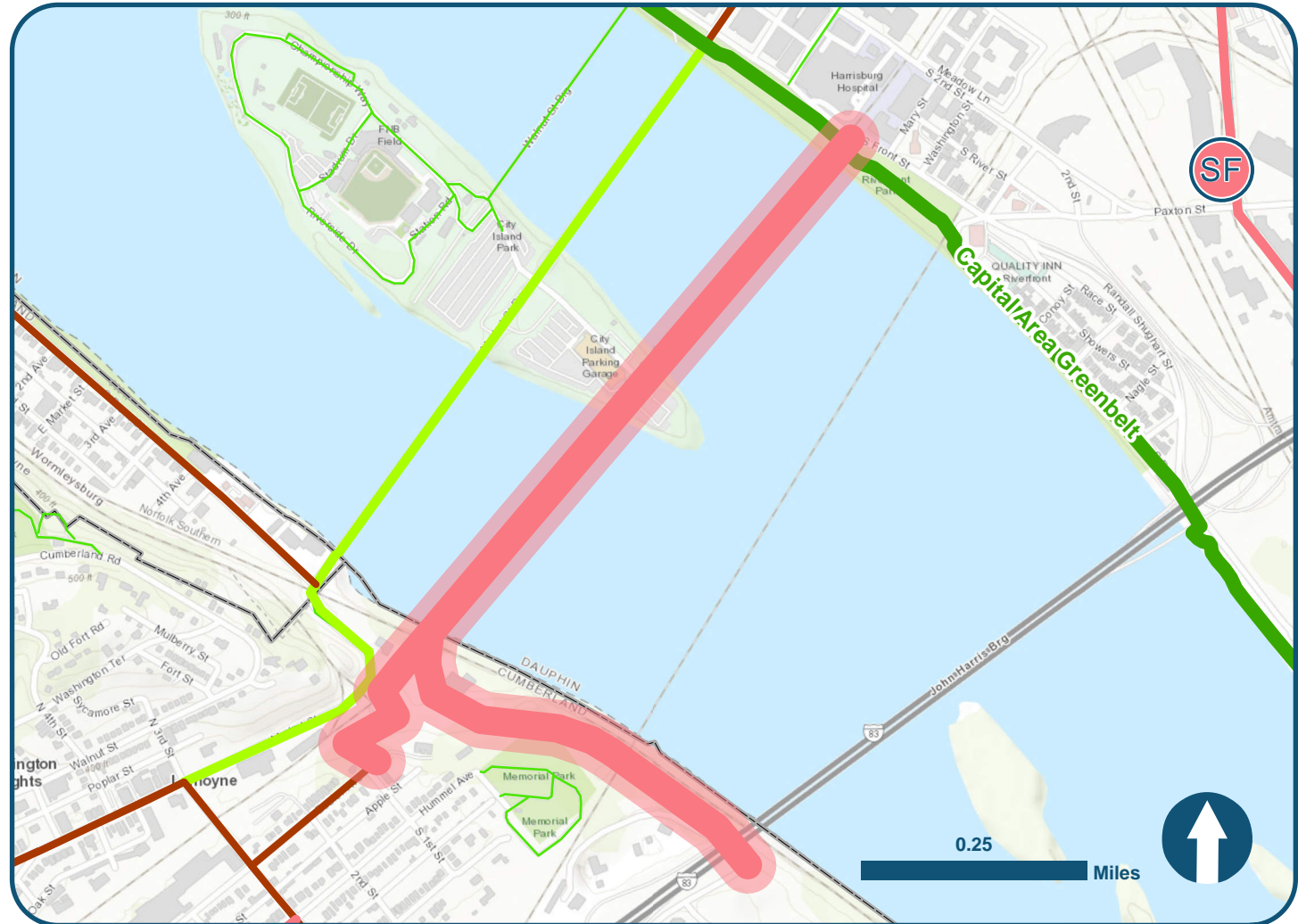
Utilizing existing abandoned railroad bridge to provide non-motorized access across Susquehanna River, from City of Harrisburg to Lemoyne Borough and New Cumberland Borough

Comments

Currently programmed on TYP (MPMS 102733); Significant recreational, tourism, and economic development potential with connections to trails/facilities currently in development

Legend

- Short Term Priorities
- Long Term Priorities
- Existing Minor Trails
- Existing Major Facilities
- In Development
- Proposed Off-road
- Proposed On-road



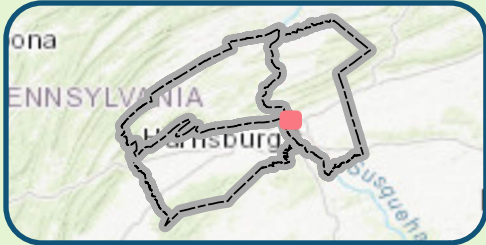
Municipality: City of Harrisburg & Lemoyne Borough

Location: Cumberland Valley Railroad Bridge (aka CAT Intermodal Bridge) and connecting trails

Length: 0.75 miles (bridge); 0.66 miles (connecting trails)

Non-motorized Crash History (2012-2022): n/a

Relevant Studies: Cross Rivers Connections Study, PEC Trail Connectivity Assessment



Transportation Need

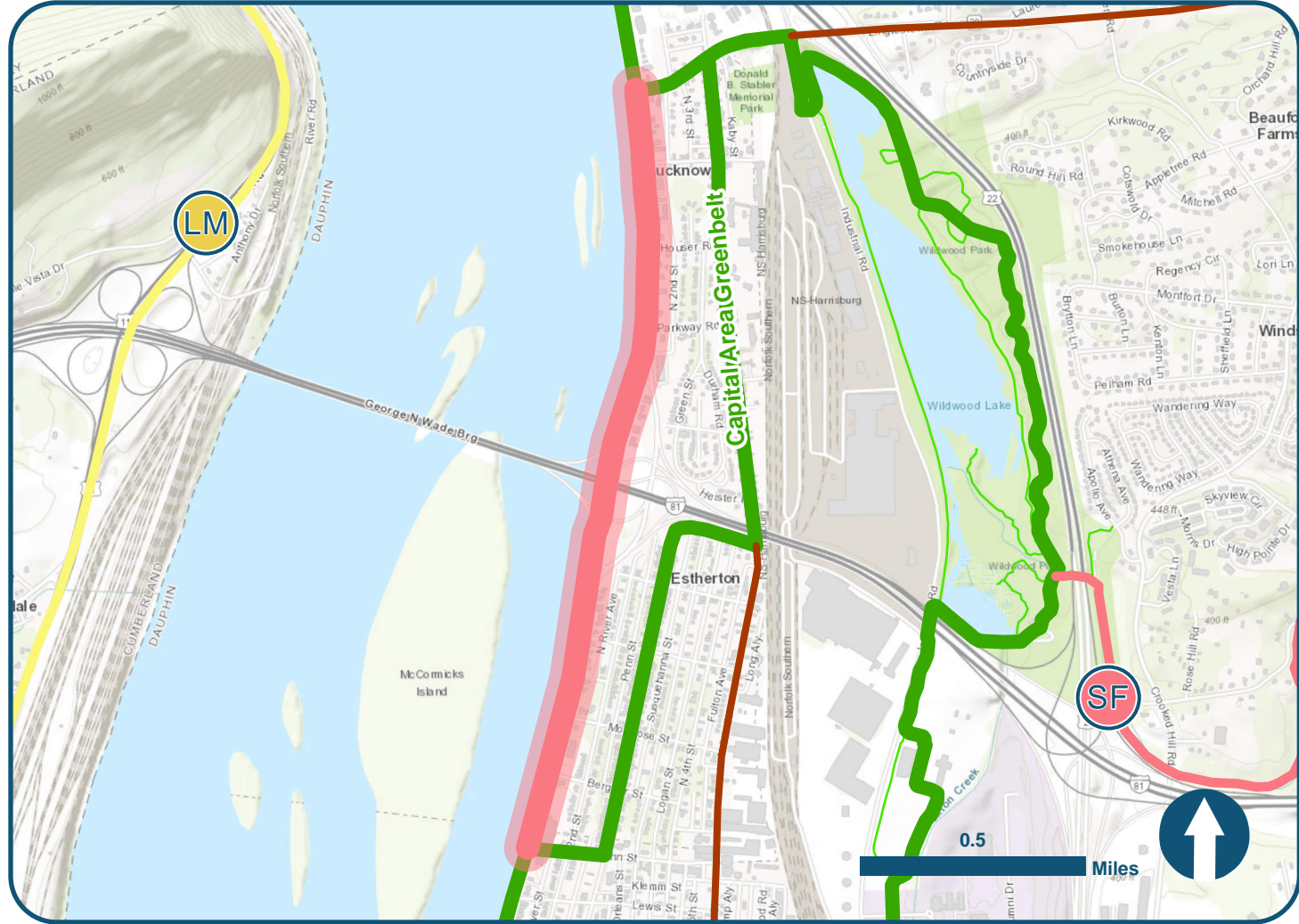
Providing a continuous off-road connection to fill gap in Capital Area Greenbelt from Vaughn Street in Harrisburg to Linglestown Road in Susquehanna Township

Comments

Identified as a High Priority Transportation Need in the HATS Regional Transportation Plan and as a candidate project in FFY 2025-2028 TIP development

Legend

- Short Term Priorities
- Long Term Priorities
- Existing Minor Trails
- Existing Major Facilities
- In Development
- Proposed Off-road
- Proposed On-road



Municipality: Susquehanna Township

Location: Susquehanna Riverfront between Vaughn Street and Linglestown Road

Length: 1.7 miles

Non-motorized Crash History (2012-2022): n/a

Relevant Studies: Building a Better Greenbelt, Susquehanna Twp Active Transportation Plan



Transportation Need

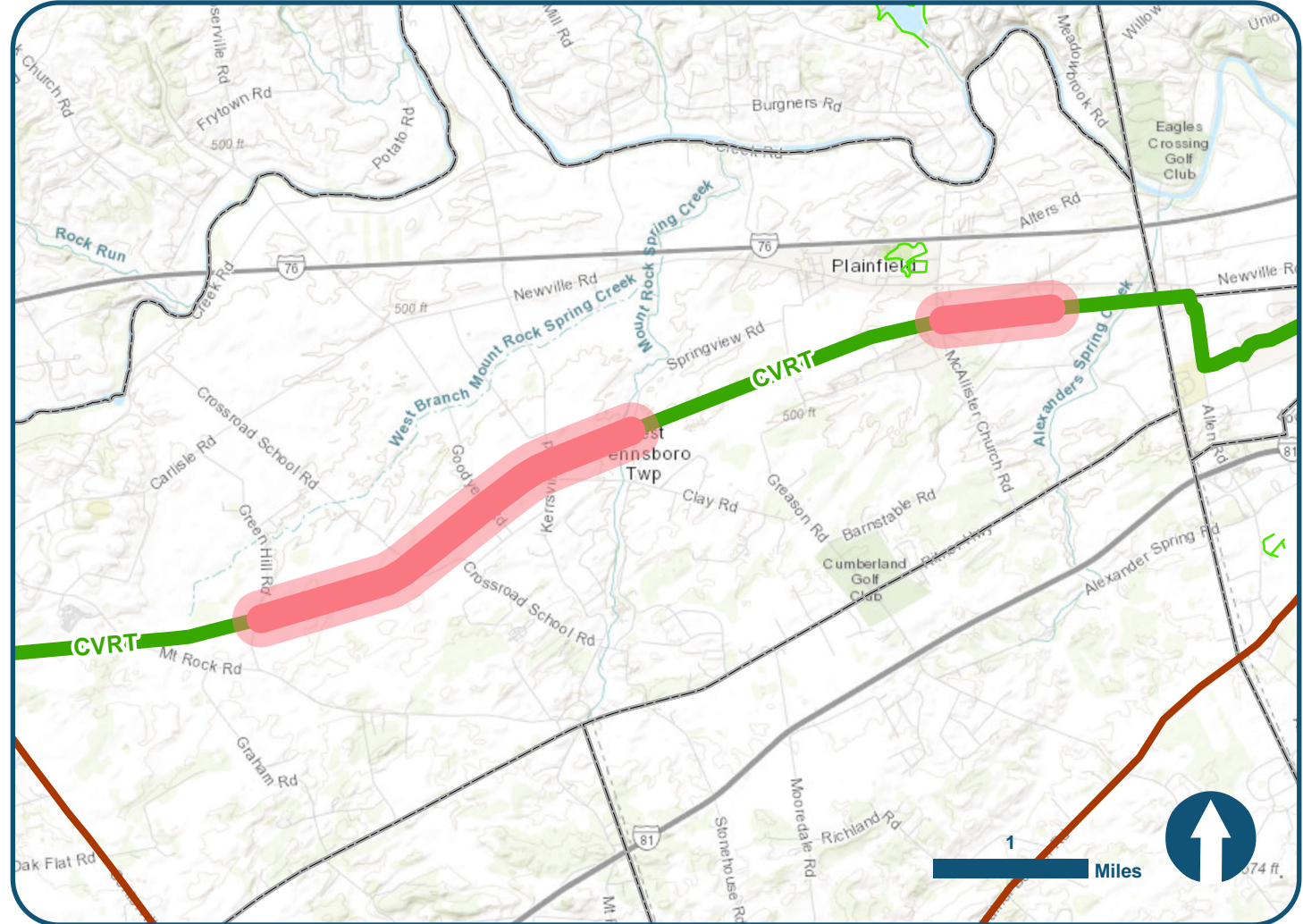
Filling existing gaps in the Cumberland Valley Rail Trail to provide continuous off-road facility between Carlisle Borough and Shippensburg Borough

Comments

Important regional attraction for non-motorized transportation and recreation; possible route of September 11 National Memorial Trail

Legend

- Short Term Priorities
- Long Term Priorities
- Existing Minor Trails
- Existing Major Facilities
- In Development
- Proposed Off-road
- Proposed On-road



Municipality: West Pennsboro Township

Location: Cumberland Valley Rail Trail

Length: 3.41 miles

Non-motorized Crash History (2012-2022): n/a

Relevant Studies: Newville to Carlisle Corridor Assessment



Transportation Need

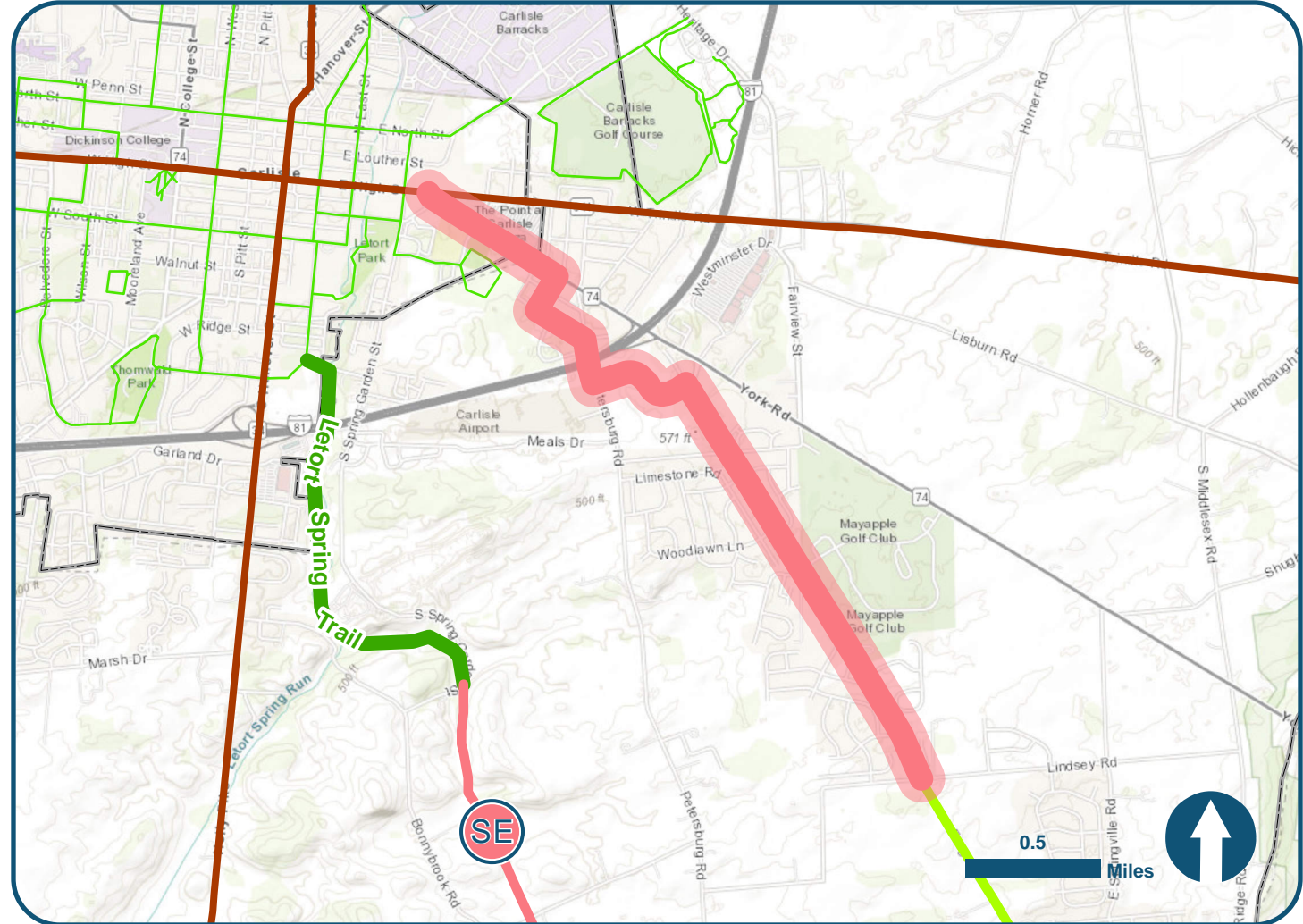
Providing a designated non-motorized connection from Lindsey Drive into Carlisle Borough, establishing non-motorized connection to Village of Boiling Springs

Comments

Connection from Lindsey Drive to Village of Boiling Springs currently programmed on TIP (MPMS 119312)

Legend

- Short Term Priorities
- Long Term Priorities
- Existing Minor Trails
- Existing Major Facilities
- In Development
- Proposed Off-road
- Proposed On-road



Municipality: Borough of Carlisle and South Middleton Township

Location: Forge Road from Lindsey Drive into Borough of Carlisle

Length: 3.17 miles

Non-motorized Crash History (2012-2022): 7 total crashes (1 suspected serious injury)

Relevant Studies: South Middleton Township Active Transportation Plan



Transportation Need

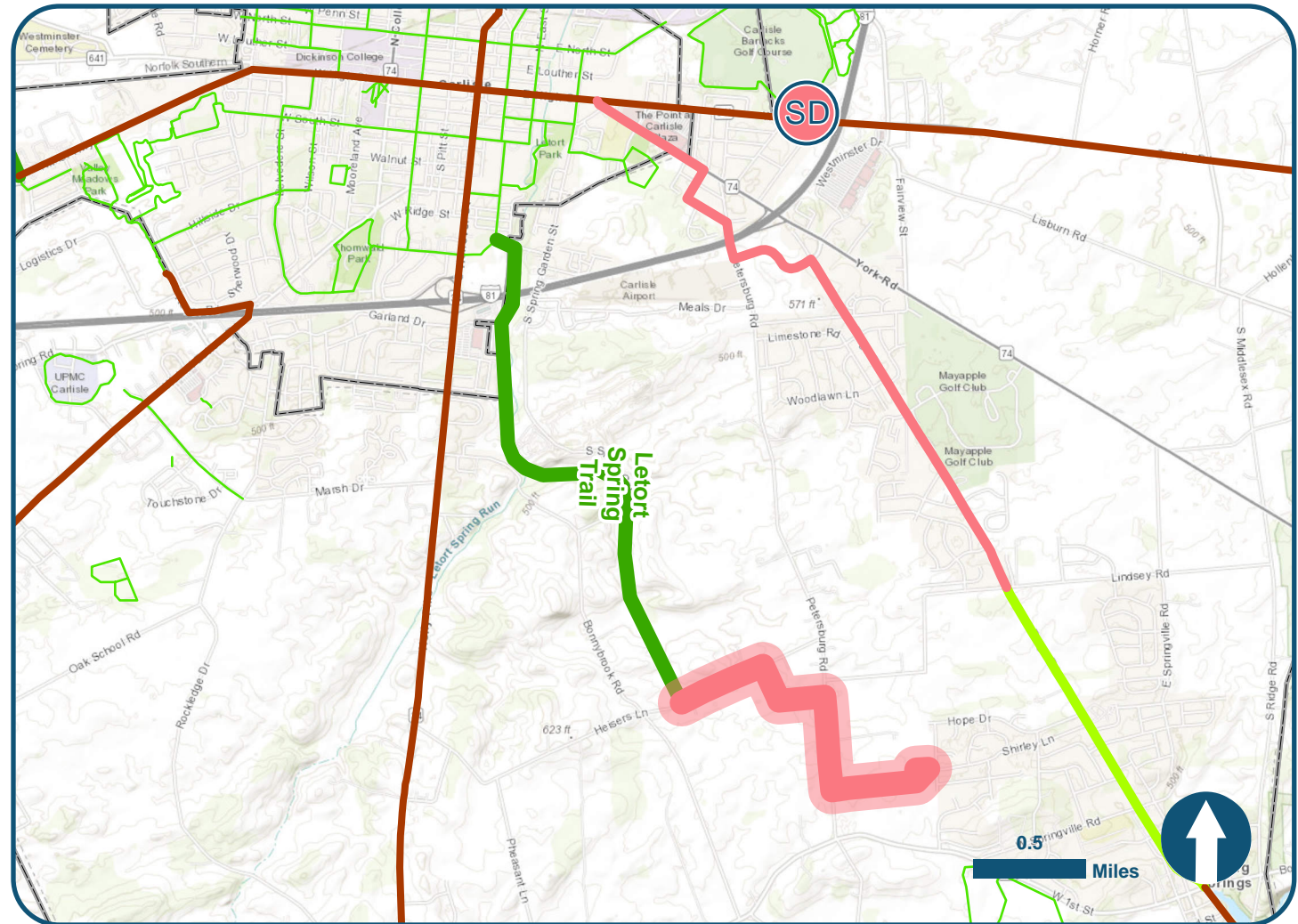
Extending Letort Spring Trail from existing terminus at Heisers Lane, connecting Borough of Carlisle to Borough of Boiling Springs

Comments

Important non-motorized regional facility; identified in South Middletown Township Active Transportation Plan

Legend

- Short Term Priorities
- Long Term Priorities
- Existing Minor Trails
- Existing Major Facilities
- In Development
- Proposed Off-road
- Proposed On-road



Municipality: Borough of Carlisle and South Middletown Township

Location: Off-road trail along LeTort Spring Run

Length: 1.5 miles

Non-motorized Crash History (2012-2022): n/a

Relevant Studies: South Middletown Township Active Transportation Plan



Transportation Need

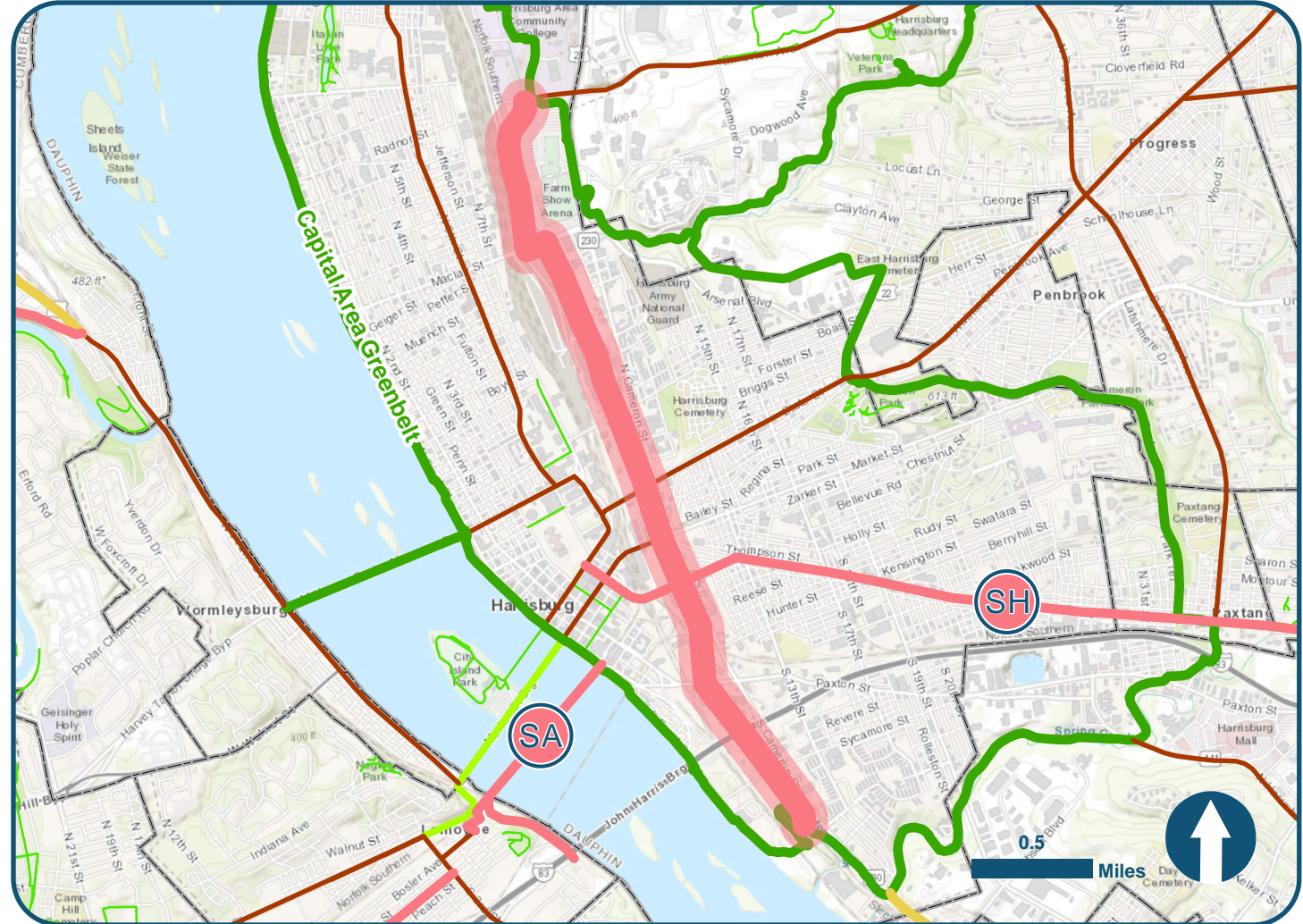
Incorporating a linear park/
non-motorized transportation
facility into the ongoing
Paxton Creek naturalization &
de-channelization project

Comments

Overall Paxton Creek project
would provide significant
ecological and economic
development benefits,
enabling implementation of
transit-oriented development
near Harrisburg
Transportation Center

Legend

- Short Term Priorities
- Long Term Priorities
- Existing Minor Trails
- Existing Major Facilities
- In Development
- Proposed Off-road
- Proposed On-road



Municipality: City of Harrisburg

Location: Along Paxton Creek, from Maclay Street to Capital Area Greenbelt

Length: 3.41 miles

Non-motorized Crash History (2012-2022): 1 total crash (1 suspected serious injury)

Relevant Studies: Harrisburg TOD Master Plan



Transportation Need

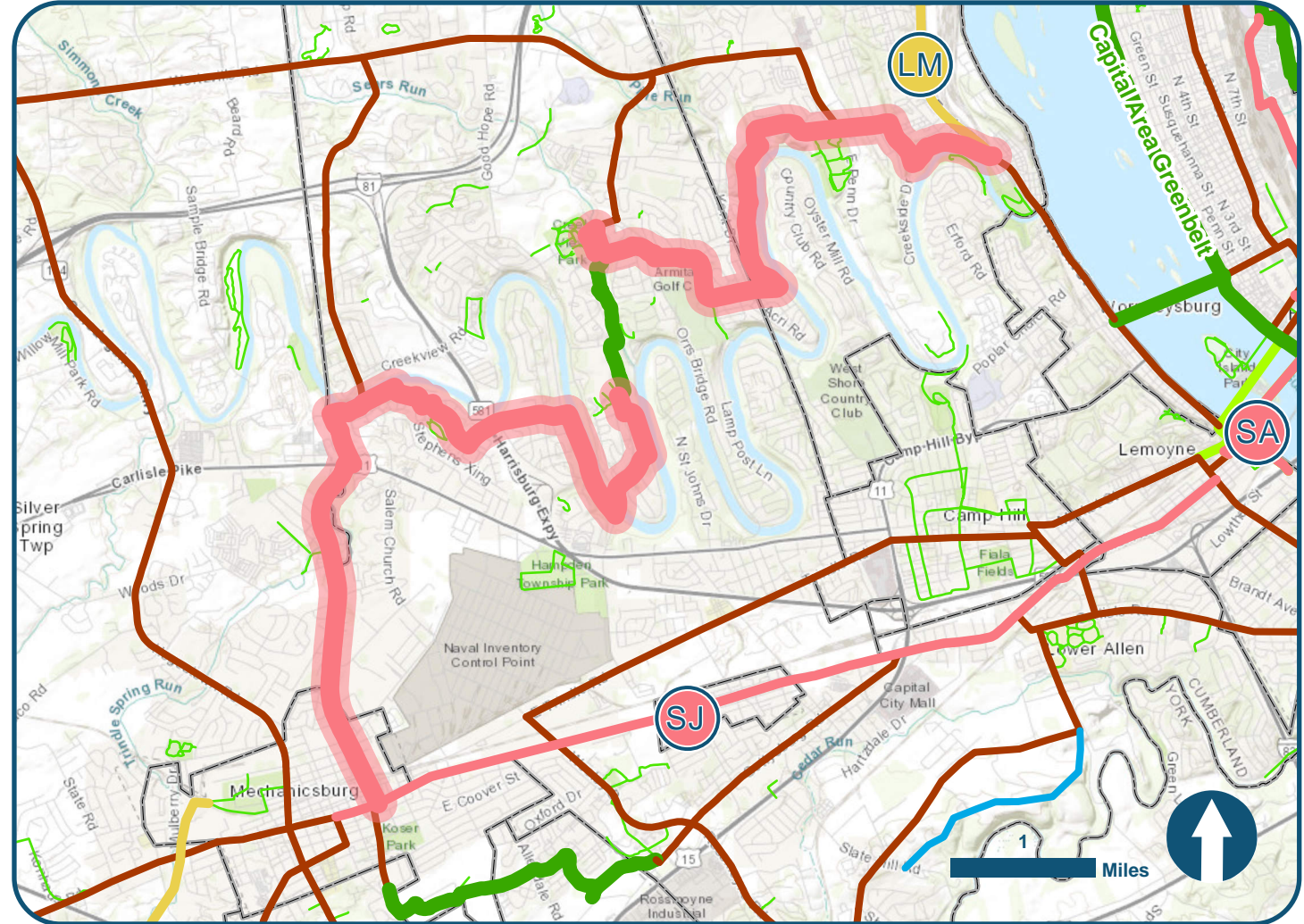
Utilizing combination of on- and off-road facilities to create a cohesive path from Lambs Gap Road to Susquehanna River on planned and existing trails as well as low-volume, residential streets

Comments

Identified in Conodoguinet Creek Trail Greenway Study; supported by advocacy group Friends of the Conodoguinet Greenway

Legend

- Short Term Priorities
- Long Term Priorities
- Existing Trails
- Existing Major Facilities
- In Development
- Proposed Off-road
- Proposed On-road



Municipality: City of Mechanicsburg, East Pennsboro, Hampden, and Silver Spring Townships

Location: Lambs Gap Road to US 11, along Conodoguinet Creek corridor

Length: 11.74 miles

Non-motorized Crash History (2012-2022): 6 total crashes (1 fatality)

Relevant Studies: Conodoguinet Creek Trail Greenway Study



Transportation Need

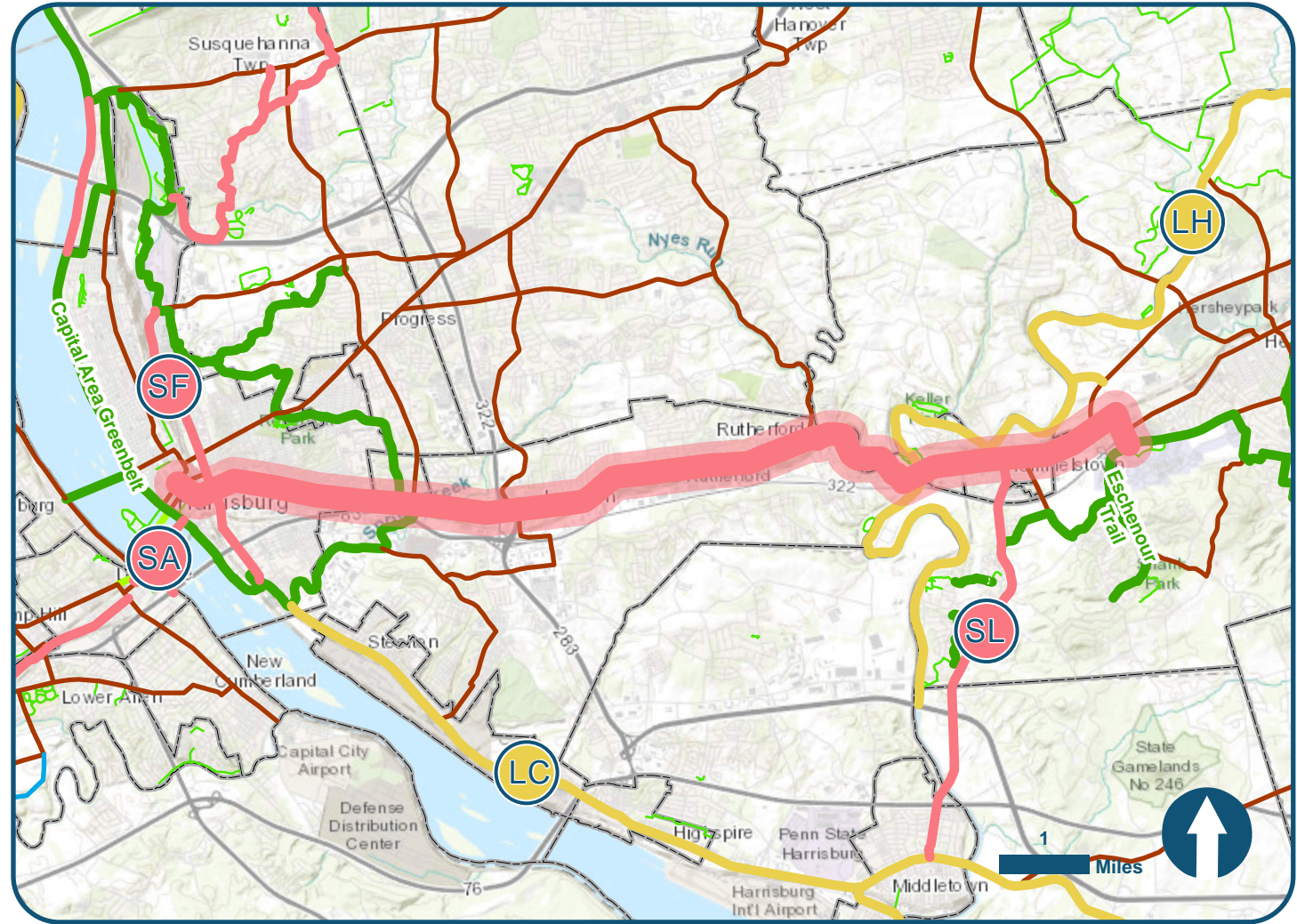
Connecting Hershey and Harrisburg through Hummelstown Borough with primarily on-road facilities along major regional corridor

Comments

Parts of the identified corridor will be improved as part of the ongoing I-83/Eisenhower Interchange project; identified in Regional Bike Connections Study

Legend

- Short Term Priorities
- Long Term Priorities
- Existing Minor Trails
- Existing Major Facilities
- In Development
- Proposed Off-road
- Proposed On-road



Municipality: City of Harrisburg, Paxtang & Hummelstown Boroughs, Swatara & Derry Townships

Location: Derry Street corridor from Harrisburg to Hershey, through Hummelstown

Length: 11.53 miles

Non-motorized Crash History (2012-2022): 114 Crashes (2 Fatalities/22 Serious Injury)

Relevant Studies: Regional Bicycle Connections Study



Transportation Need

Providing off-road trails and facilities around perimeter of Bloomsburg Borough; part of connection from Borough to Little Buffalo State Park

Comments

Important local connections to recreational opportunities; identified in Bloomfield Borough Comprehensive Plan

Legend

- Short Term Priorities
- Long Term Priorities
- Existing Minor Trails
- Existing Major Facilities
- In Development
- Proposed Off-road
- Proposed On-road



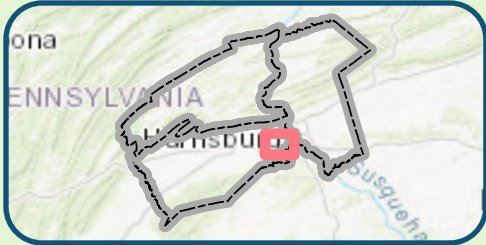
Municipality: Bloomfield Borough

Location: Bloomfield Borough municipal park and surrounding area

Length: 1.94 miles

Non-motorized Crash History (2012-2022): n/a

Relevant Studies: Bloomfield Borough Comprehensive Plan



Transportation Need

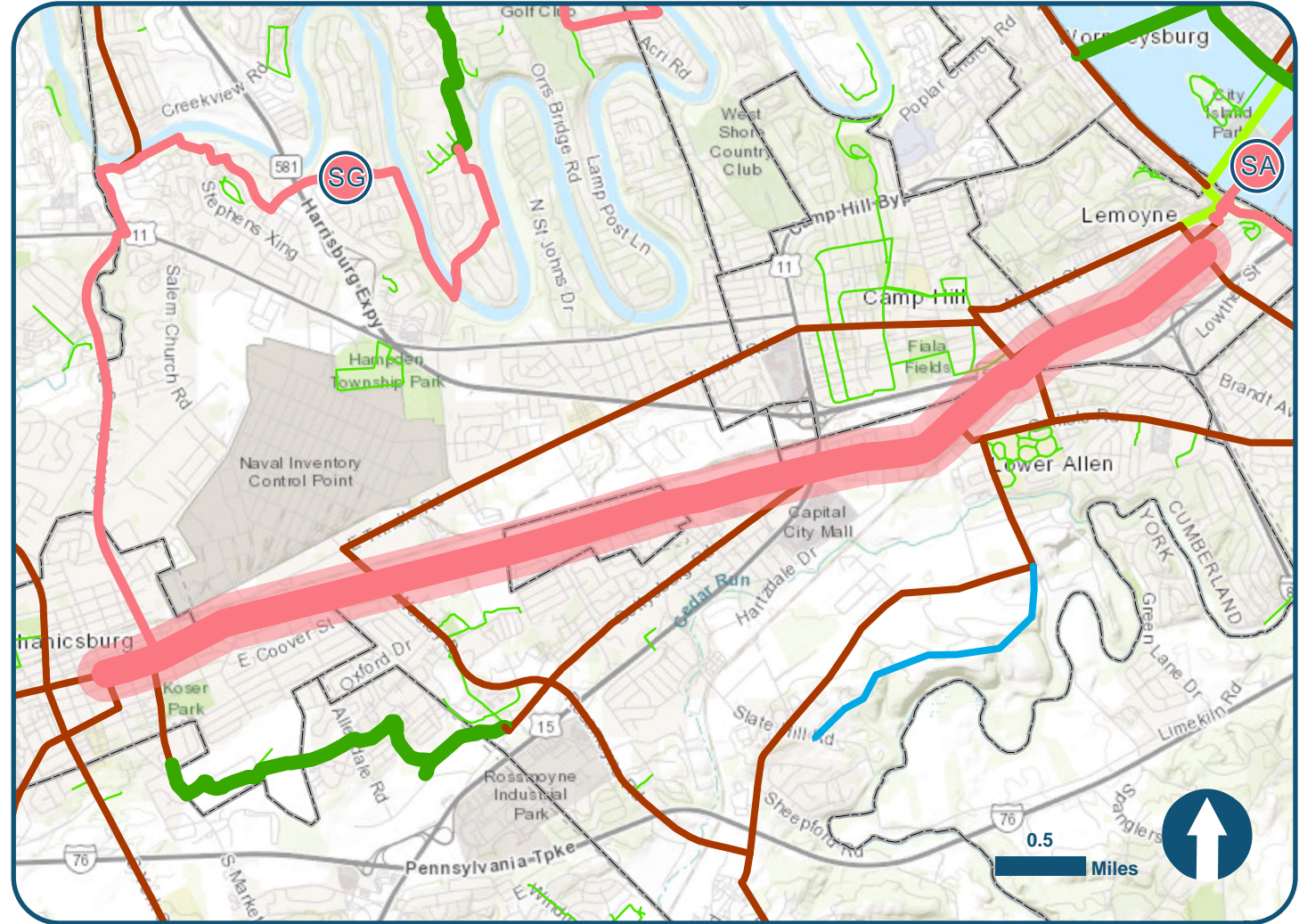
Connecting Mechanicsburg Borough to Lemoyne Borough through Shiremanstown and Lower Allen Township, primarily with on-road facilities

Comments

Identified in Lower Allen Township Bicycle and Pedestrian Plan and Gettysburg Road Corridor Master Plan; part of PA Bike Route J and possible route of September 11 National Memorial Trail

Legend

- Short Term Priorities
- Long Term Priorities
- Existing Minor Trails
- Existing Major Facilities
- In Development
- Proposed Off-road
- Proposed On-road



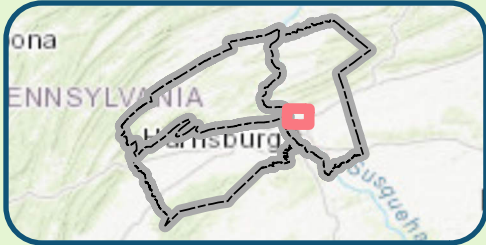
Municipality: Mechanicsburg, Shiremanstown, and Lemoyne Boroughs, Lower Allen Township

Location: Mechanicsburg to Lemoyne, along Simpson Ferry Rd/Gettysburg Rd/Hummel Ave

Length: 6.62 miles

Non-motorized Crash History (2012-2022): 27 total crashes (3 suspected serious injuries)

Relevant Studies: Gettysburg Road Corridor Study & Lower Allen Township Bike/Ped Plan



Transportation Need

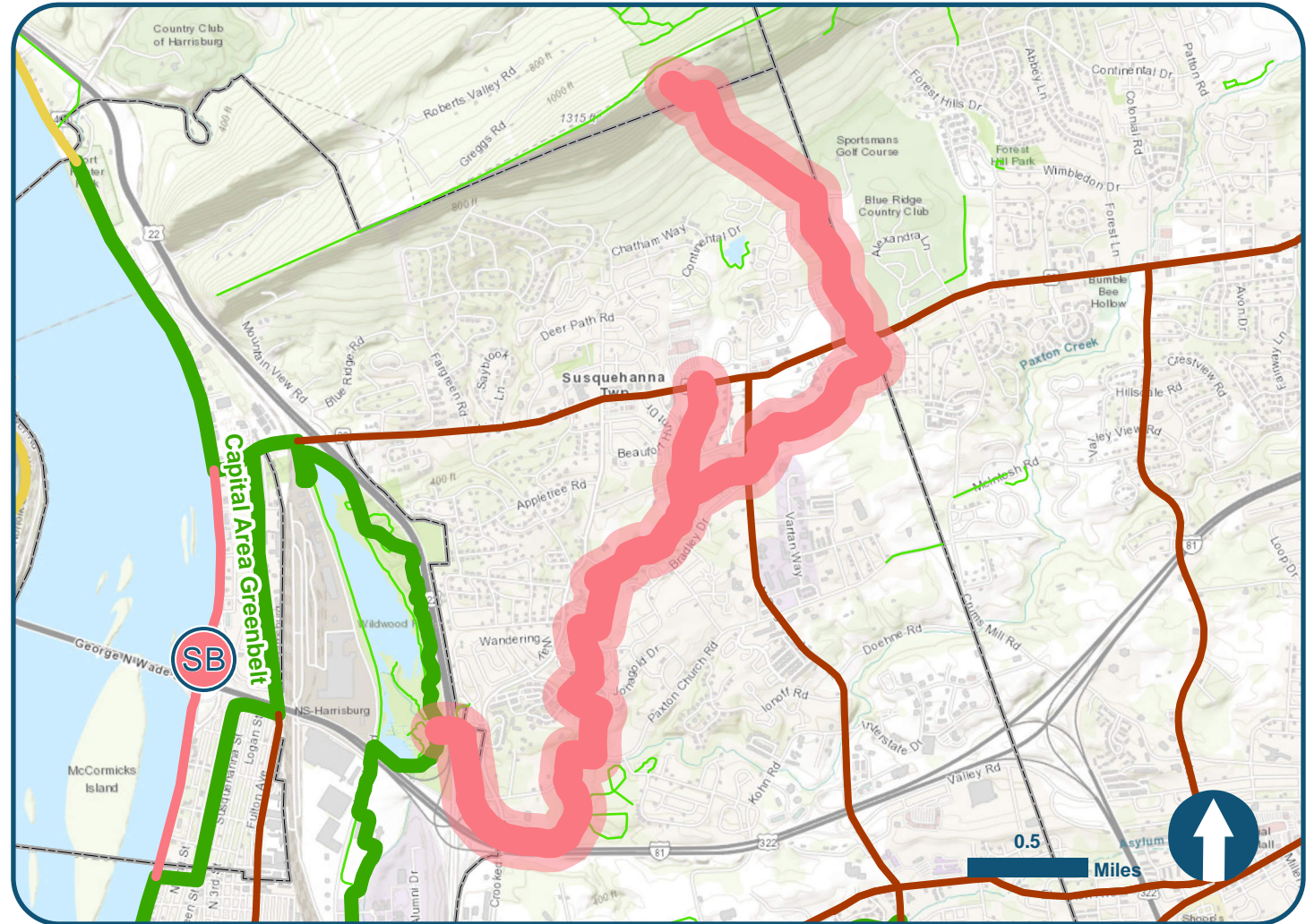
Providing an off-road facility connecting Linglestown Road (SR 39) with Capital Area Greenbelt and Wildwood Park

Comments

Would connect numerous residential areas with commercial and recreational opportunities; identified in Susquehanna Township Active Transportation Plan

Legend

- Short Term Priorities
- Long Term Priorities
- Existing Minor Trails
- Existing Major Facilities
- In Development
- Proposed Off-road
- Proposed On-road



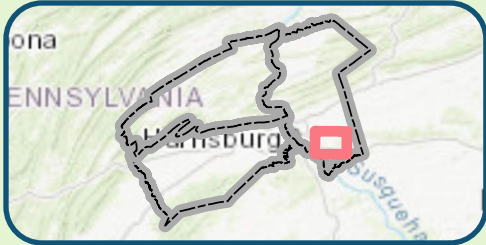
Municipality: Susquehanna Township

Location: Paxton Creek and Black Run corridors from Wildwood Lake to Linglestown Road

Length: 5.92 miles

Non-motorized Crash History (2012-2022): n/a

Relevant Studies: Susquehanna Township Active Transportation Plan



Transportation Need

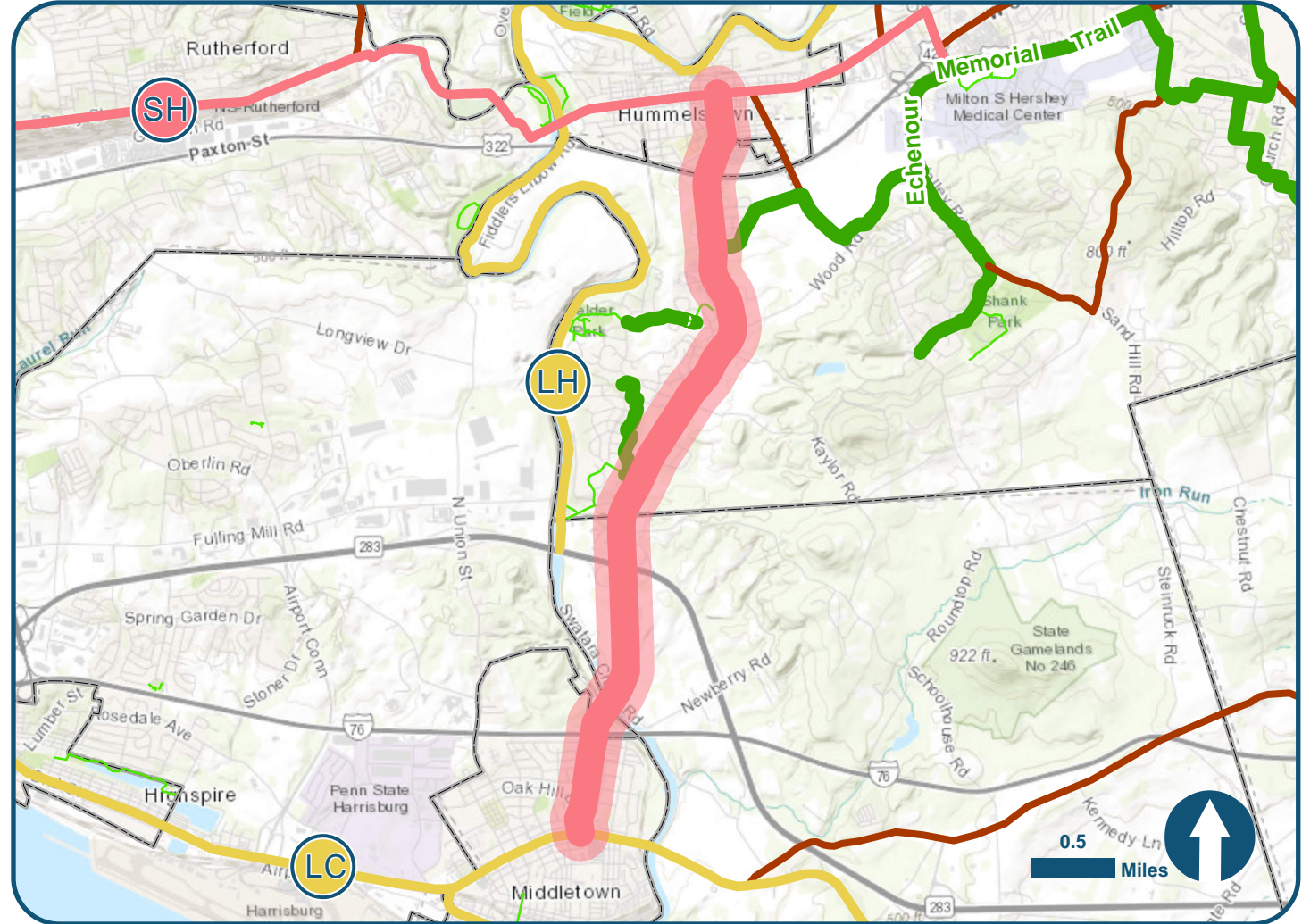
Connecting Middletown and Hummelstown Boroughs through a combination of on- and off-road facilities

Comments

Improvements on portions of corridor currently programmed on TIP (MPMS 116786); would connect to Jonathan Eschenour Memorial Trail; identified in Greater Hershey Regional Transportation Study

Legend

- Short Term Priorities
- Long Term Priorities
- Existing Minor Trails
- Existing Major Facilities
- In Development
- Proposed Off-road
- Proposed On-road



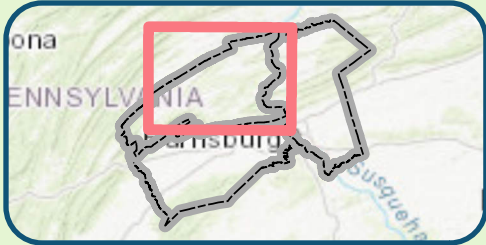
Municipality: Londonderry, Derry, and Lower Swatara Townships

Location: Middletown Road connecting Hummelstown to Middletown

Length: 4.72 miles

Non-motorized Crash History (2012-2022): 10 total crashes (1 suspected serious injury)

Relevant Studies: Greater Hershey Regional Transportation Plan



Transportation Need

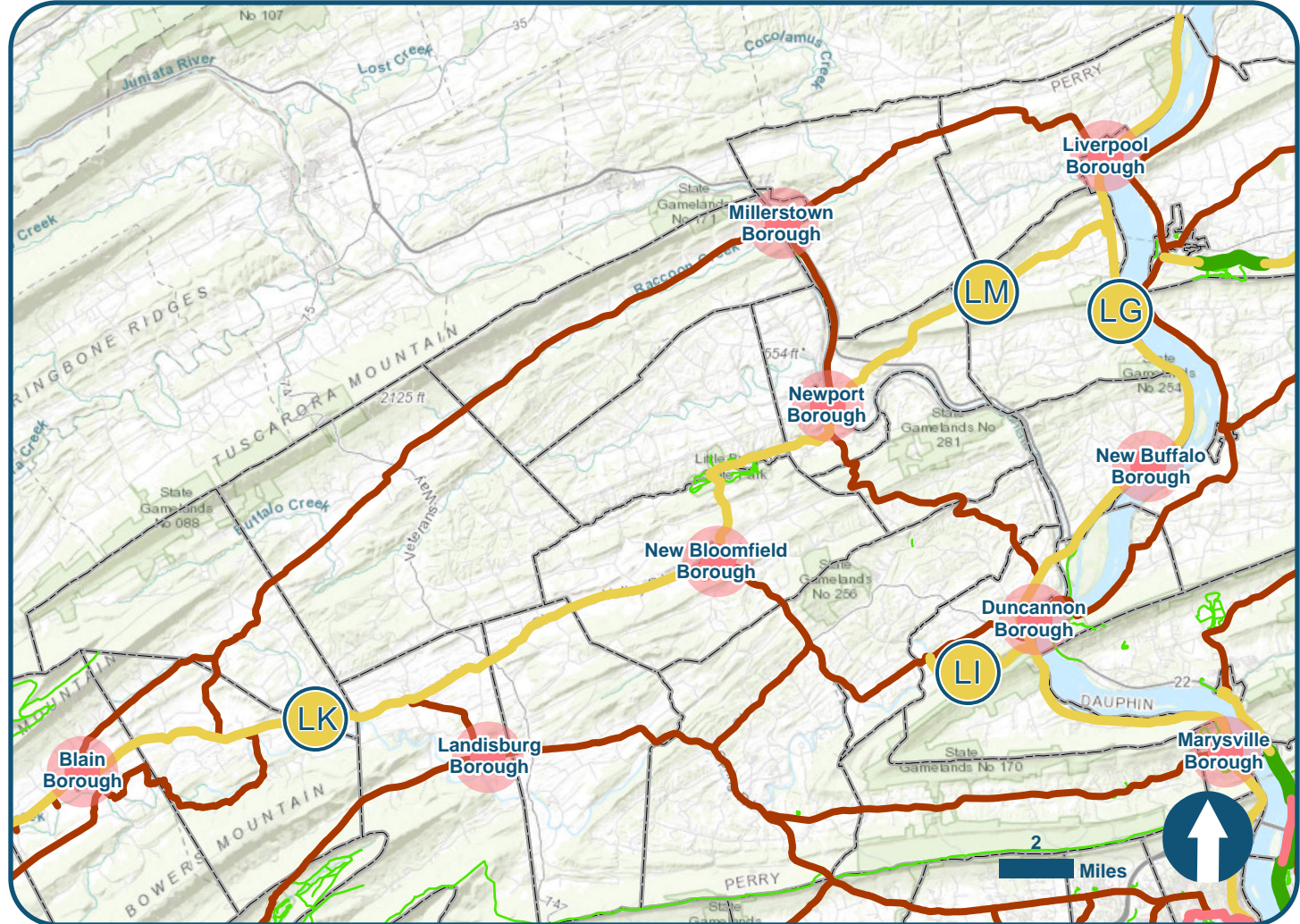
Implementation of concepts and improvements identified for all nine boroughs in Perry County Economic Vitality Plan, developed by Perry County Economic Development Authority

Comments

Downtown improvements focused on local connections and walkability; significant economic development, place-making, and eco-/agri-tourism potential

Legend

- Short Term Priorities
- Long Term Priorities
- Existing Major Facilities
- In Development
- Proposed Off-road
- Proposed On-road
- Existing Minor Trails



Municipality: Nine Perry County Boroughs

Location: Perry County

Length: n/a

Non-motorized Crash History (2012-2022): n/a

Relevant Studies: Perry County Economic Vitality Plan